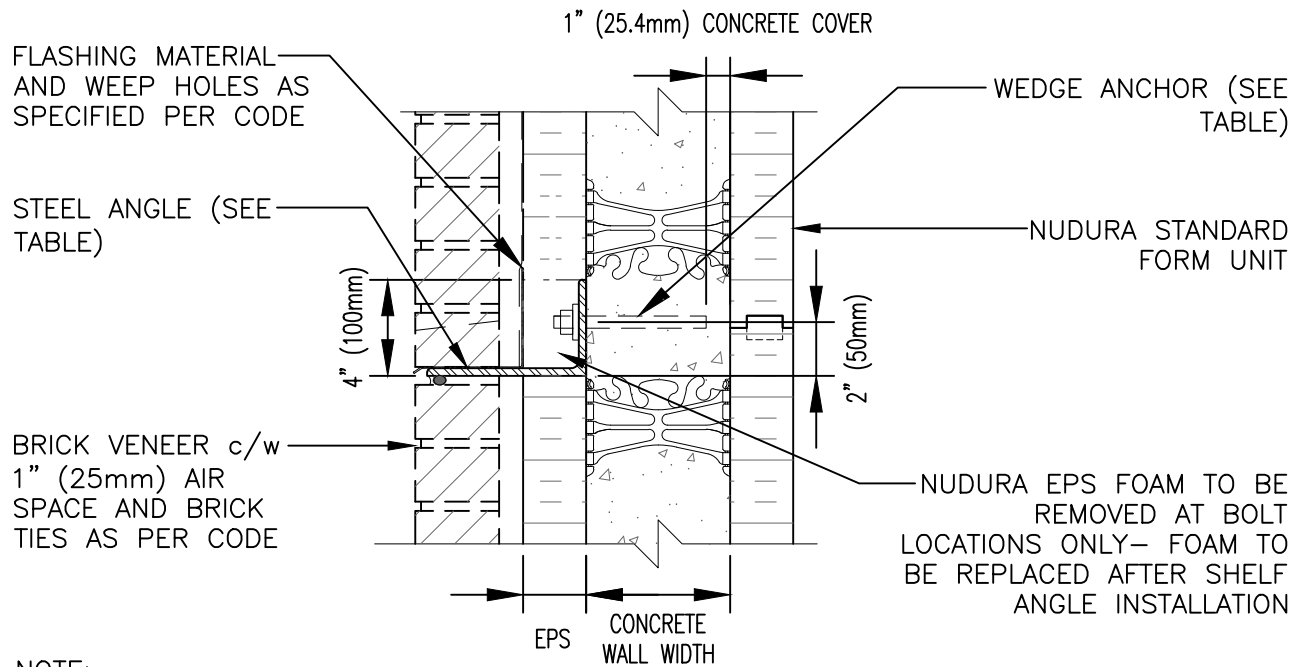


DISCLAIMER NOTICE:
 SPECIFIC INFORMATION
 REQUIRED FOR COMPLIANCE
 WITH LOCAL CODES IS THE
 RESPONSIBILITY OF THE
 DESIGNER



NOTE:
 MAINTAIN u/s OF ANCHOR SHAFT 2" (50mm) MINIMUM
 CLEARANCE FROM WEBS AND 1" (25mm) COVER ALL AROUND

HILTI ANCHORS TO BE SIZED AS PER TABLE BELOW

	HEIGHT OF SUPPORTED BRICK ABOVE ANGLE	
	10'-0" (3050mm)	20'-0" (6100mm)
ANGLE SIZE	L6" x 4" x 5/16" (L152mm x 102mm x 7.9mm)	L6" x 4" x 3/8" (L152mm x 102mm x 9.5mm)
ANCHOR SIZE */ EMBEDMENT	HSL M12/25 3.2" (80mm)	HSL M16/25 4.2" (105mm)
ANCHOR SPACING	16" (406mm)	16" (406mm)

* ANCHORS SPECIFIED ABOVE ARE HILTI HEAVY DUTY ANCHORS

NOTE:

- 1 CONTRACTOR TO INSTALL ANCHORS AS PER SUPPLIER'S SPECIFICATIONS.
- 2 ASSUMES BRICK INSTALLATION IN ACCORDANCE WITH APPLICABLE CODES.
- 3 MINIMUM STEEL Fy=43.5 ksi (300 MPa) YIELD STRENGTH FOR ANGLES
- 4 ANGLES AND BOLTS TO BE GALVANIZED OR STAINLESS STEEL TO MEET THE REQUIREMENT OF TABLE 5.1 OF CSA A370-04 (CAN) OR ASTM E754 (USA) (CONNECTIONS FOR MASONRY ANCHORS AND TIES).

The architecture, engineering, and design of the project using the Nudura products are the responsibility of the project's design professional. All products and systems must comply with local building codes and standards. This detail is for general information and guidance only and Nudura specifically disclaims any liability for the use of this detail. The project design professional determines, in its sole discretion, whether this detail or a functionally equivalent detail is best suited for the project. This detail is subject to change without notice. Contact Nudura to ensure you have the most recent version.

Typical Details



Detail: Brick Shelf Angle Back of Angle Flush with Concrete (Post Installation Mount)
 Drawn by: J.N / N.L Scale: NTS Date: 10/29/2021
 tremcocpg.com

File Name:
 C-11

