

BRICK VENEER c/w 1" (25mm) AIR SPACE AND BRICK TIES

FORM PANELS c/w INSERT WEBS—CUT TO SUIT FLOOR CONNECTION— ADDITIONAL FORM SUPPORT AS REQUIRED

WET SET DOWELS FIELD BENT INTO SLAB AS SPECIFIED

U BRACKET ANCHOR INSERT

WET SET DOWELS TO MATCH VERTICAL REINFORCEMENT BETWEEN POUR OR AS SPECIFIED

HORIZ/VERT REINFORCEMENT AS PER CODE OR AS SPECIFIED

NUDURA 6" (152mm) STANDARD FORM UNIT

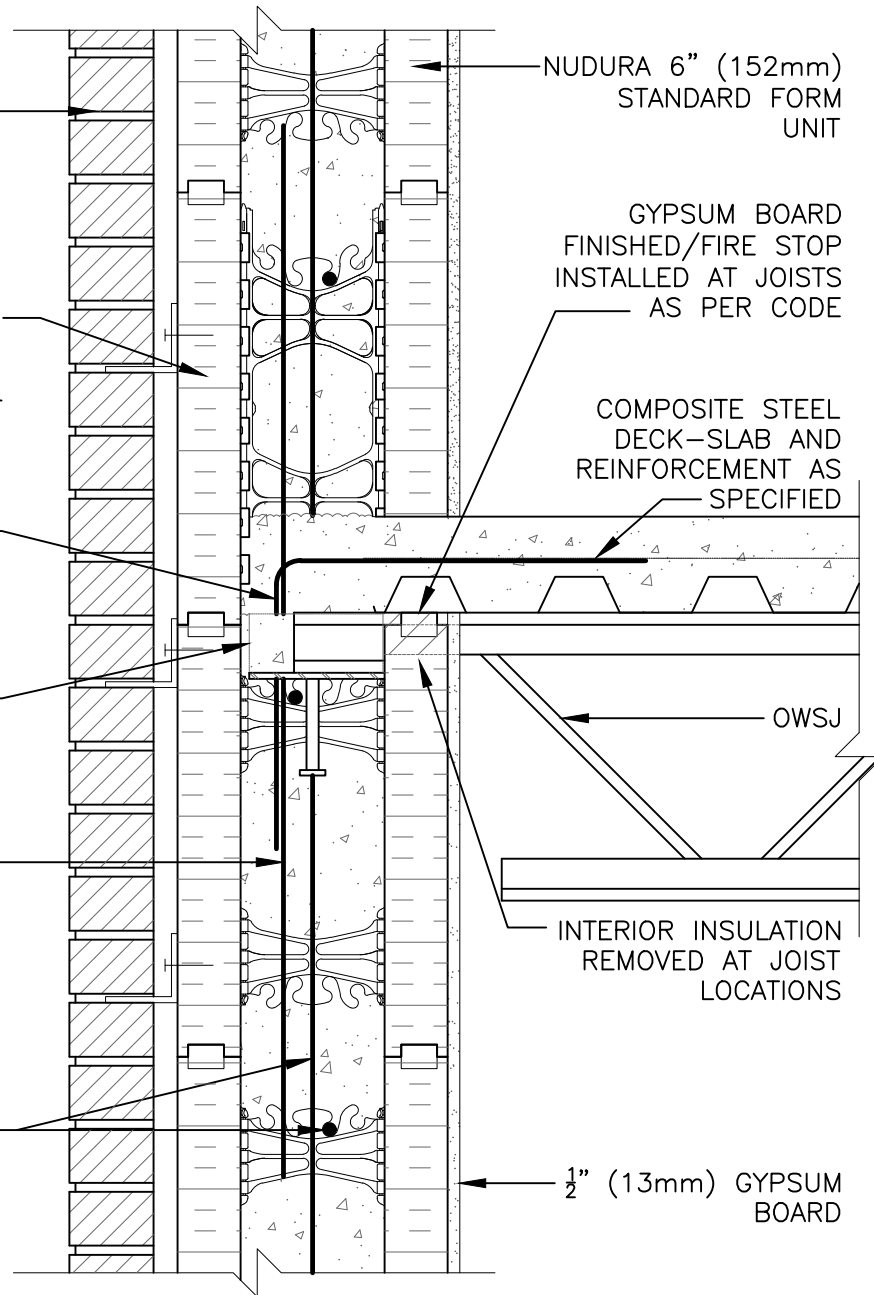
GYPSUM BOARD FINISHED/FIRE STOP INSTALLED AT JOISTS AS PER CODE

COMPOSITE STEEL DECK—SLAB AND REINFORCEMENT AS SPECIFIED

OWSJ

INTERIOR INSULATION REMOVED AT JOIST LOCATIONS

1/2" (13mm) GYPSUM BOARD



The architecture, engineering, and design of the project using the Nudura products are the responsibility of the project's design professional. All products and systems must comply with local building codes and standards. This detail is for general information and guidance only and Nudura specifically disclaims any liability for the use of this detail. The project design professional determines, in its sole discretion, whether this detail or a functionally equivalent detail is best suited for the project. This detail is subject to change without notice. Contact Nudura to ensure you have the most recent version.

Non-Combustible Construction



Detail: Nudura 6" (152mm) Form Unit, Composite Steel Deck-Slab, Steel Joists on Ext. Bearing Wall, Intermediate Floor Connection, Brick Veneer Finish

Drawn by: TVC

Scale: 1 : 8

Date: 5/17/2022

File Name:

D6C09

