

NUDURA 10" (254mm) STANDARD FORM UNIT

ANGLED FIELD CUT OVER WIDTH OF OPENING TO ALLOW FOR CONCRETE HEAD

THROUGH WALL FLASHING AS PER CODE OR AS SPECIFIED

STEEL LINTEL AS SPECIFIED (w/ BOLTS OR NELSON STUDS EMBEDDED AS PER OPENING REQUIREMENTS)

CONTINUOUS CAULKING AROUND FRAME AT CONTACT TO MASONRY

ALUMINUM WINDOW FRAME

CONTINUOUS CAULKING AROUND FRAME AT CONTACT TO MASONRY

MASONRY OR BRICK SILL COURSE

SILL PAN (OPTIONAL)

BRICK VENEER c/w 1" (25mm) AIR SPACE AND BRICK TIES

HORIZ/VERT REINFORCEMENT AS PER CODE OR AS SPECIFIED

1/2" (13mm) GYPSUM BOARD

LINTEL REINFORCEMENT AS PER CODE OR AS SPECIFIED

1 1/2" (38mm) MIN. COVER

VAPOUR BARRIER SEALED TO FRAME

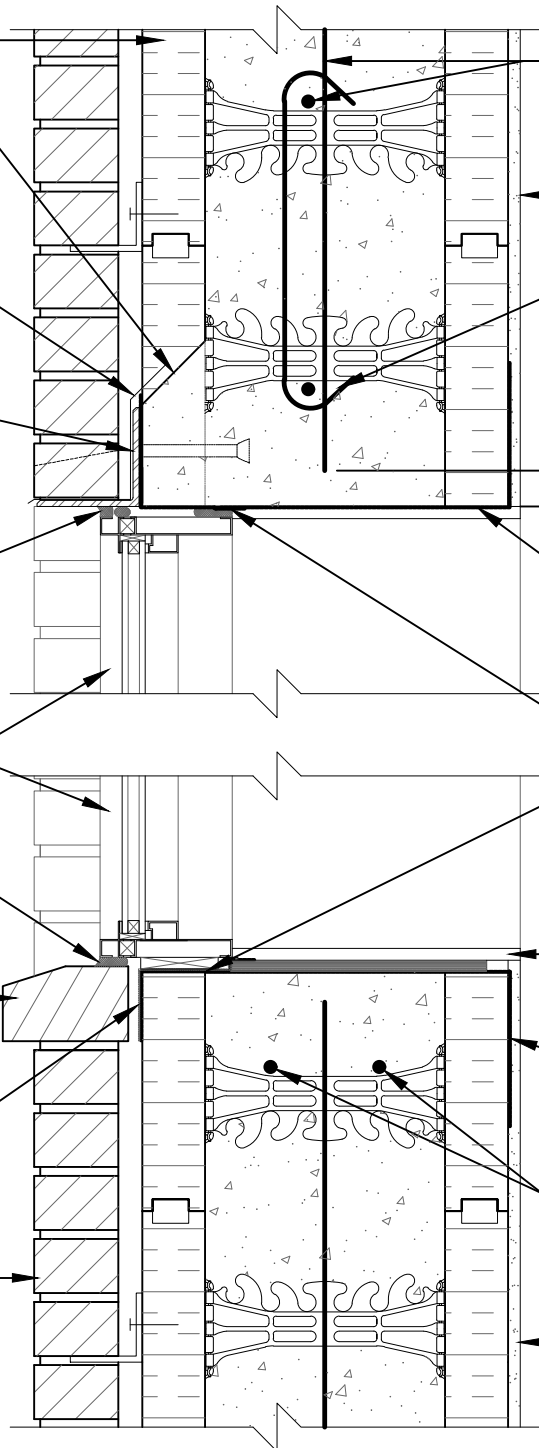
NUDURA WATERPROOF MEMBRANE LAPPED OVER VAPOUR BARRIER TO COMPLETE AIR SEAL

GYPSUM BOARD RETURN TO FRAME

VAPOUR BARRIER SEALED TO FRAME



OPENING REINFORCEMENT AS PER CODE OR AS SPECIFIED

1/2" (13mm) GYPSUM BOARD



The architecture, engineering, and design of the project using the Nudura products are the responsibility of the project's design professional. All products and systems must comply with local building codes and standards. This detail is for general information and guidance only and Nudura specifically disclaims any liability for the use of this detail. The project design professional determines, in its sole discretion, whether this detail or a functionally equivalent detail is best suited for the project. This detail is subject to change without notice. Contact Nudura to ensure you have the most recent version.

Non-Combustible Construction

 <p>Nudura Technical Support: 866-468-6299 International: +1 705-726-9499</p>	Detail: Nudura 10" (254mm) Form Unit, Window Head/Sill Detail, Aluminum Framed Window, Concrete Mounted, Brick Veneer Finish		File Name:	 <p>Construction Products Group</p>
	Drawn by: TVC	Scale: 1 : 8	Date: 5/24/2022	