

WOOD, VINYL, STEEL, ETC. BUCK MATERIAL FASTENED TO CONCRETE w/ EMBEDDED SPIRAL NAILS, BOLTS, SCREWS IN STAGGERED PATTERN, OR AS PER MANUFACTURERS SPECIFICATIONS

1/2" (13mm) GYPSUM BOARD

VAPOR BARRIER SEALED TO FRAME

GYPSUM BOARD RETURN TO FRAME

OPENING REINFORCEMENT AS PER CODE OR AS SPECIFIED

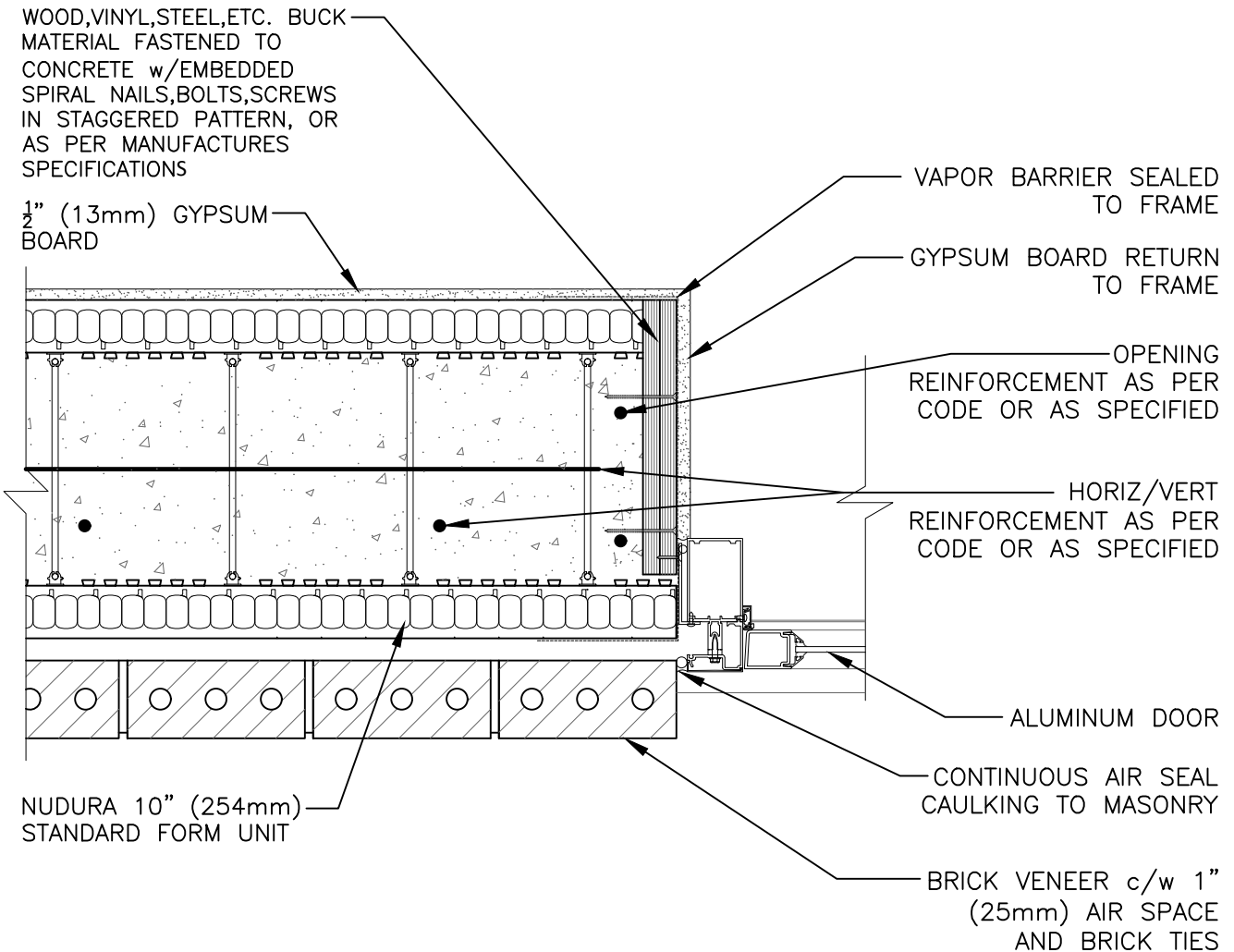
HORIZ/VERT REINFORCEMENT AS PER CODE OR AS SPECIFIED

ALUMINUM DOOR

CONTINUOUS AIR SEAL CAULKING TO MASONRY

BRICK VENEER c/w 1" (25mm) AIR SPACE AND BRICK TIES

NUDURA 10" (254mm) STANDARD FORM UNIT



The architecture, engineering, and design of the project using the Nudura products are the responsibility of the project's design professional. All products and systems must comply with local building codes and standards. This detail is for general information and guidance only and Nudura specifically disclaims any liability for the use of this detail. The project design professional determines, in its sole discretion, whether this detail or a functionally equivalent detail is best suited for the project. This detail is subject to change without notice. Contact Nudura to ensure you have the most recent version.

Non-Combustible Construction



Detail: Nudura 10" (254mm) Form Unit, Wood Buck Mounted Aluminum Door

Jamb Detail, Brick Veneer Finish, Direct Attached

Drawn by: TVC

Scale: 1 : 8

Date: 12/14/2021

File Name:

E10E02

