

NUDURA 12" (305mm)
STANDARD FORM UNIT

DECORATIVE EPS FOAM
TRIM (HEAD AND SILL)
APPLIED TO NUDURA
FORM USING EPS
COMPATIBLE
ADHESIVE

FASTEN STUCCO MESH TO
BACK OF TEMPORARY BUCK
TO ALLOW MESH TO BOND
WITH CONCRETE

ALUMINUM WINDOW
FRAME BY OTHERS

FOR MULTI-STOREY
APPLICATIONS, EIFS
LAMINA TO LAP BACK
AROUND BUCK TO
LINK w/ CONCRETE

FOAM BACKER ROD
AND CONTINUOUS
CAULKING AROUND
FRAME

OPENING
REINFORCEMENT AS PER
CODE OR AS SPECIFIED

DIRECT APPLIED
ACRYLIC FINISH

1/2" (13mm) GYPSUM
BOARD

HORIZ/VERT
REINFORCEMENT AS PER
CODE OR AS SPECIFIED

LINTEL
REINFORCEMENT AS
PER CODE OR AS
SPECIFIED

1 1/2"
(38mm) MIN.
COVER

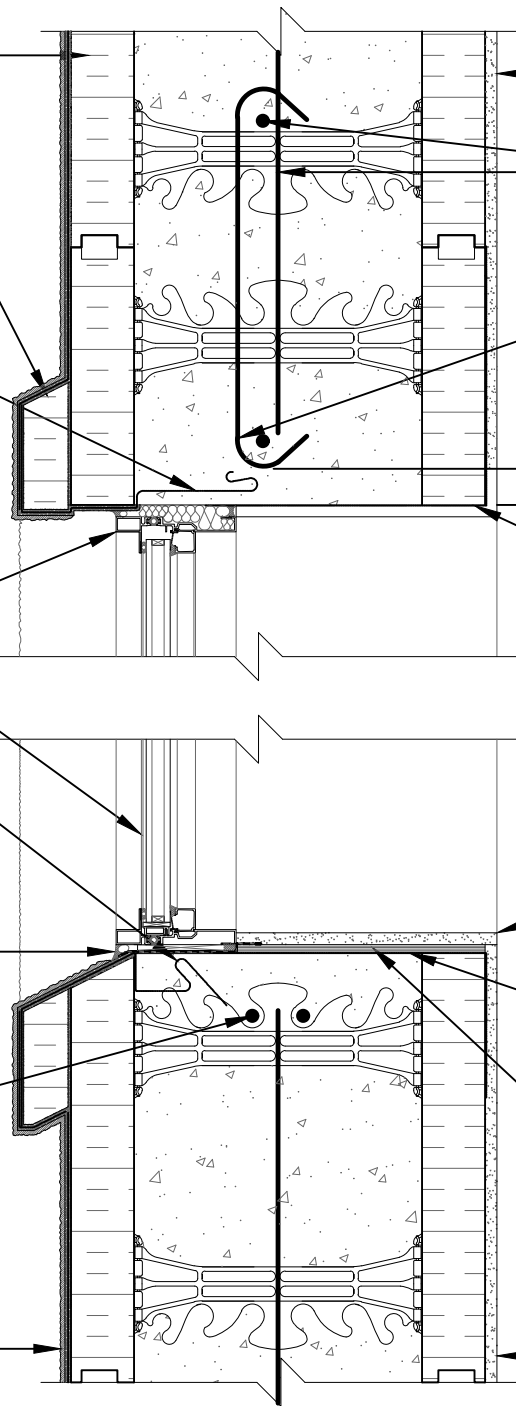
VAPOR BARRIER c/w
FOAM ROD/CAULK OR
SEAL TO INTERIOR
EDGE OF FRAME

GYPSUM BOARD
RETURN TO FRAME

VAPOR BARRIER SEALED
TO FRAME AT SILL
CONDITION

COMPRESSIBLE AIR
SEAL GASKET APPLIED
TO FULL LENGTH REAR
EDGE OF SILL PRIOR
TO FRAME INSTALLATION

1/2" (13mm) GYPSUM
BOARD



The architecture, engineering, and design of the project using the Nudura products are the responsibility of the project's design professional. All products and systems must comply with local building codes and standards. This detail is for general information and guidance only and Nudura specifically disclaims any liability for the use of this detail. The project design professional determines, in its sole discretion, whether this detail or a functionally equivalent detail is best suited for the project. This detail is subject to change without notice. Contact Nudura to ensure you have the most recent version.

Non-Combustible Construction

Detail: Nudura 12" (305mm) Form Unit, Window Head/Sill Detail,
Aluminum Framed Window, Concrete Mounted, Exterior Finish as Specified

File Name:

Drawn by: TVC

Scale: 1 : 8

Date: 12/29/2021

E12D07

Nudura

Nudura Technical Support: 866-468-6299
International: +1 705-726-9499

TREMCO

Construction Products Group

tremcocpg.com