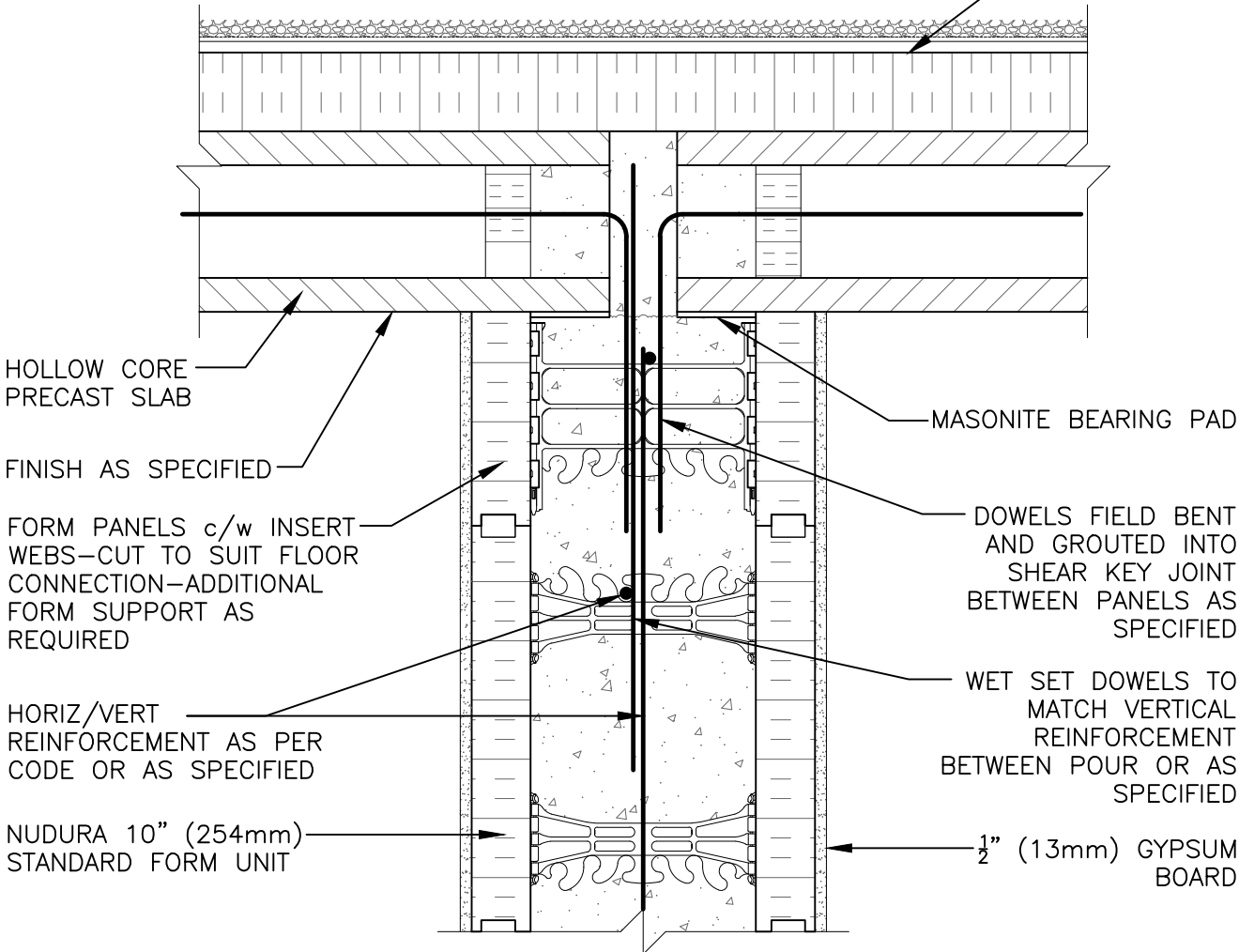




FIBER BOARD SUBSTRATE
w/ ROOF MEMBRANE
ON 3 1/2" (89mm) RIGID
INSULATION



The architecture, engineering, and design of the project using the Nudura products are the responsibility of the project's design professional. All products and systems must comply with local building codes and standards. This detail is for general information and guidance only and Nudura specifically disclaims any liability for the use of this detail. The project design professional determines, in its sole discretion, whether this detail or a functionally equivalent detail is best suited for the project. This detail is subject to change without notice. Contact Nudura to ensure you have the most recent version.

Non-Combustible Construction

 Nudura Technical Support: 866-468-6299 International: +1 705-726-9499	Detail: Nudura 10" (254mm) Form Unit, Hollow Core Precast Roof, Bearing Demising Wall	File Name: G10A03	 Construction Products Group
	Drawn by: KS	Scale: 1 : 8	