

WINDOW FRAMING BY OTHERS

FOAM BACKER ROD AND CONTINUOUS CAULKING AROUND FRAME

2x2 (38mmx38mm) ROUGH NAILER

WOOD SIDING NAILED TO STRAPPING AS SPECIFIED

OPENING REINFORCEMENT AS PER CODE OR AS SPECIFIED

NUDURA 6" (152mm) STANDARD FORM UNIT

1"x2" (25mmX51mm) WOOD STRAPPING SCREWED TO FASTENING STRIPS AS SPECIFIED

GYPSUM BOARD RETURN TO FRAME

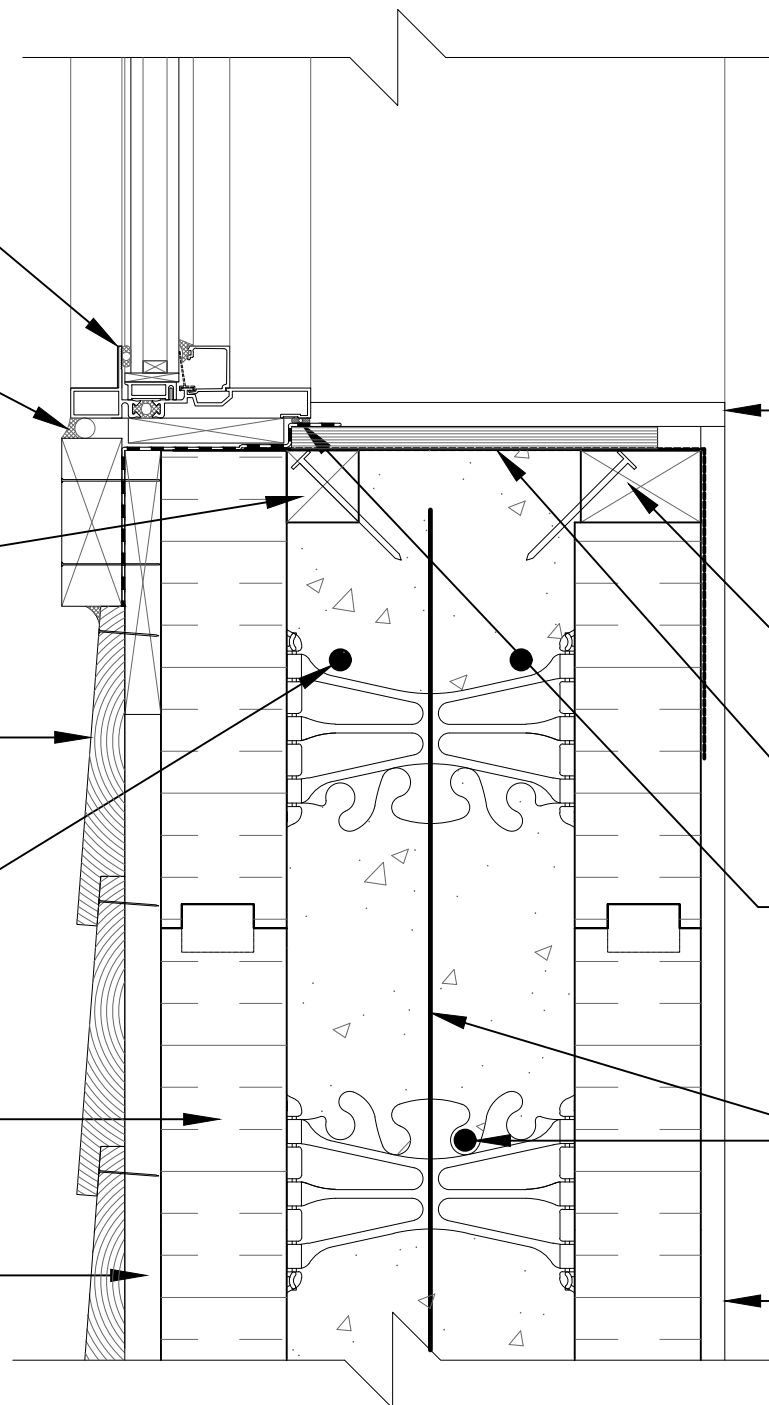
2x3" (38mmX64mm) ROUGH NAILER

VAPOR BARRIER SEALED TO FRAME AT SILL CONDITION

COMPRESSIBLE AIR SEAL GASKET APPLIED TO FULL LENGTH REAR EDGE OF SILL PRIOR TO FRAME INSTALLATION



HORIZ/VERT REINFORCEMENT AS PER CODE OR AS SPECIFIED

1/2" (13mm) GYPSUM BOARD



The architecture, engineering, and design of the project using the Nudura products are the responsibility of the project's design professional. All products and systems must comply with local building codes and standards. This detail is for general information and guidance only and Nudura specifically disclaims any liability for the use of this detail. The project design professional determines, in its sole discretion, whether this detail or a functionally equivalent detail is best suited for the project. This detail is subject to change without notice. Contact Nudura to ensure you have the most recent version.

Non-Combustible Construction

 www.nudura.com Nudura Technical Support: 866-468-6299 International: +1 705-726-9499	Detail: Nudura 6" (152mm) Form Unit, Window Sill Detail, Aluminum Framed Window, Wood Rough Buck, Horizontal Wood Siding		File Name:	 Construction Products Group
	Drawn by: KS	Scale: 1 : 4	Date: 12/29/2021	
Tremco Construction Products Group companies: Dryvit Systems, Inc.; Nudura Inc.; Prebuck LLC; Schul International Co., LLC d/b/a/ Willseal; Tremco Incorporated				