

NUDURA 6" (152mm)
STANDARD FORM UNIT

1/2" (13mm)
GYPSUM BOARD

DIRECT APPLIED
ACRYLIC FINISH

HORIZ/VERT
REINFORCEMENT AS
PER CODE OR AS
SPECIFIED

FOR MULTI-STOREY
APPLICATIONS, EIFS
LAMINA TO LAP BACK
AROUND BUCK TO
LINK w/ CONCRETE

LINTEL
REINFORCEMENT AS
PER CODE OR AS
SPECIFIED

DECORATIVE EPS FOAM
TRIM APPLIED TO
NUDURA FORM USING
EPS COMPATIBLE
ADHESIVE

FASTEN STUCCO MESH
TO BUCK PRIOR TO
PLACING BUCK AT
HEAD CONDITION

1 1/2"
(38mm) MIN.
COVER

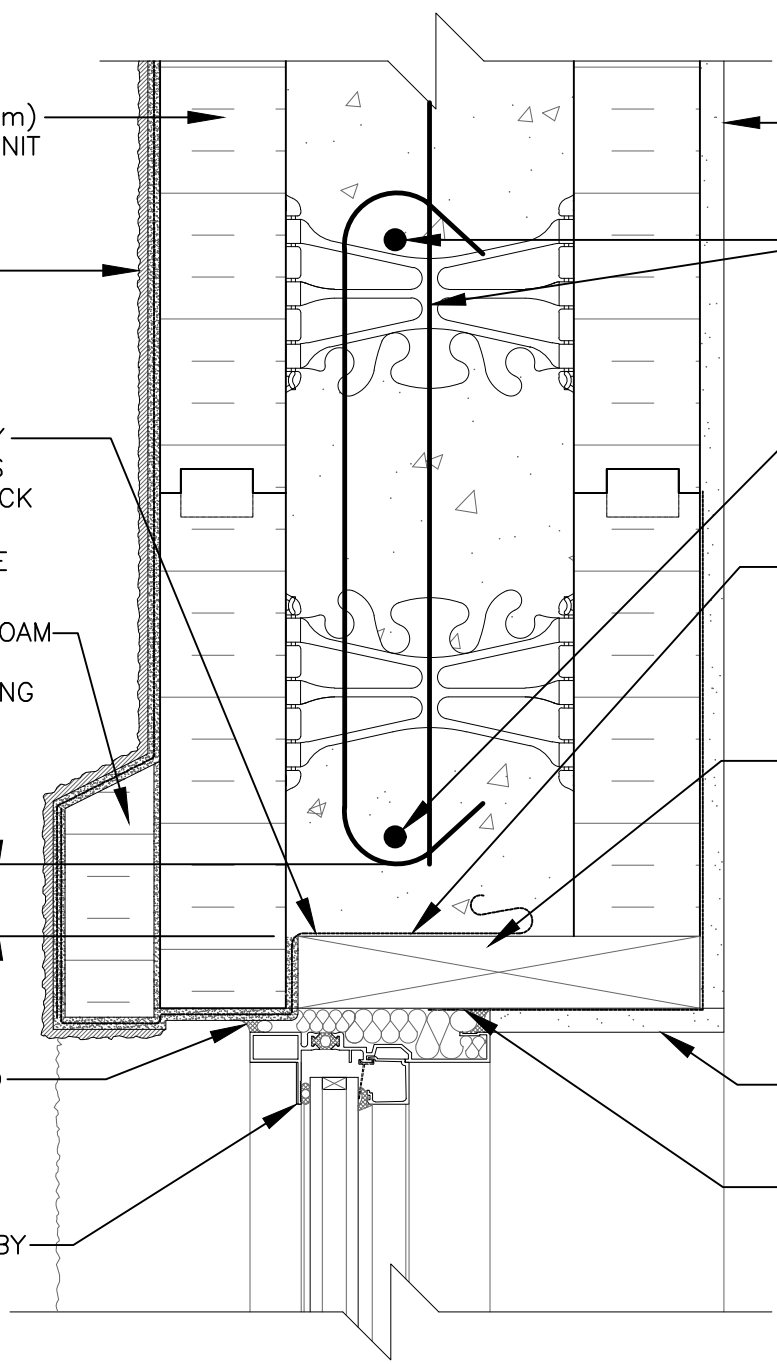
WOOD, VINYL, STEEL,
ETC. BUCK MATERIAL
FASTENING TO CONCRETE
w/ EMBEDDED SPIRAL
NAILS, BOLTS, SCREW IN
STAGGERED PATTERN, OR
AS PER MANUFACTURERS
SPECIFICATION

FOAM BACKER ROD
AND CONTINUOUS
CAULKING AROUND
FRAME

GYPSUM BOARD RETURN
TO FRAME


WINDOW FRAMING BY
OTHERS

VAPOR BARRIER c/w
FOAM ROD/CAULK
TO SEAL TO
INTERIOR EDGE OF
FRAME



The architecture, engineering, and design of the project using the Nudura products are the responsibility of the project's design professional. All products and systems must comply with local building codes and standards. This detail is for general information and guidance only and Nudura specifically disclaims any liability for the use of this detail. The project design professional determines, in its sole discretion, whether this detail or a functionally equivalent detail is best suited for the project. This detail is subject to change without notice. Contact Nudura to ensure you have the most recent version.

Non-Combustible Construction

 Nudura Technical Support: 866-468-6299 International: +1 705-726-9499	Detail: Nudura 6" (152mm) Form Unit, Window Head Detail, Aluminum Framed Window, Wood Rough Buck, Direct Applied Acrylic Finish		File Name:	 Construction Products Group
	Drawn by: KS	Scale: 1 : 4	Date: 12/28/2021	

tremcocpg.com