

WINDOW FRAMING
BY OTHERS

FOR MULTI-STORY
APPLICATIONS, EIFS
LAMINA TO LAP
BACK AROUND
BUCK TO LINK w/
CONCRETE

FOAM BACKER ROD
AND CONTINUOUS
CAULKING AROUND
FRAME

2x2 (38mmx38mm)
ROUGH NAILER

OPENING
REINFORCEMENT AS
PER CODE OR AS
SPECIFIED

NUDURA 6" (152mm)
STANDARD FORM UNIT

DRAINABLE EXTERIOR
INSULATION
FINISHING SYSTEM

GYPSUM BOARD RETURN
TO FRAME

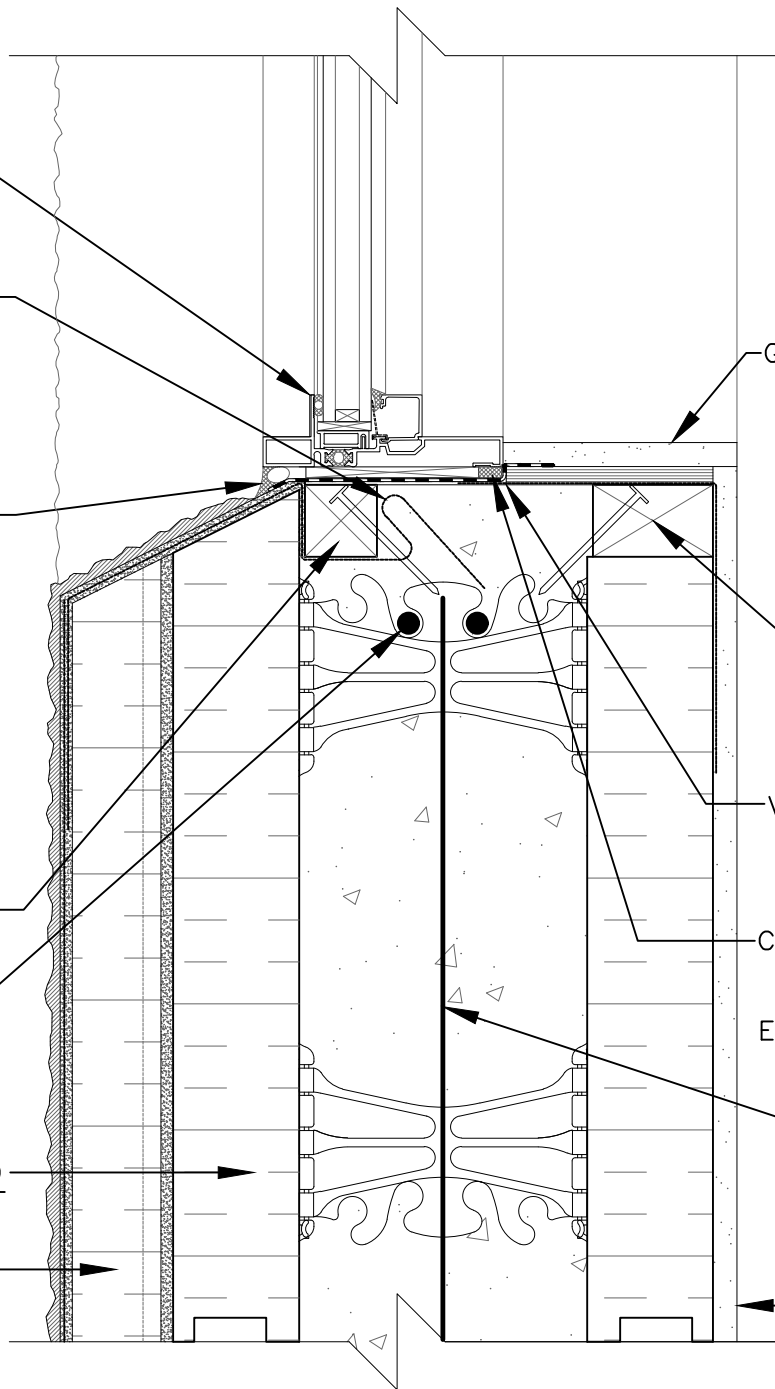
2x3" (38mmX64mm)
ROUGH NAILER

VAPOR BARRIER SEALED
TO FRAME AT SILL
CONDITION

COMPRESSIBLE AIR SEAL
GASKET APPLIED TO
FULL LENGTH REAR
EDGE OF SILL PRIOR TO
FRAME INSTALLATION



HORIZ/VERT
REINFORCEMENT AS
PER CODE OR AS
SPECIFIED

1/2" (13mm)
GYPSUM BOARD



The architecture, engineering, and design of the project using the Nudura products are the responsibility of the project's design professional. All products and systems must comply with local building codes and standards. This detail is for general information and guidance only and Nudura specifically disclaims any liability for the use of this detail. The project design professional determines, in its sole discretion, whether this detail or a functionally equivalent detail is best suited for the project. This detail is subject to change without notice. Contact Nudura to ensure you have the most recent version.

Non-Combustible Construction

 Nudura Technical Support: 866-468-6299 International: +1 705-726-9499	Detail: Nudura 6" (152mm) Form Unit, Window Sill Detail, Aluminum Framed Window, Wood Rough Buck, Drainable EIFS		File Name:	 TREMCO Construction Products Group
	Drawn by: KS	Scale: 1 : 4	Date: 12/29/2021	