

GABLE END TRUSS
INSTALLED TO ALLOW
SHEATHING TO BE
INSTALLED FLUSH TO
FACE OF NUDURA
FORM UNITS

BRICK VENEER c/w 1"
(25mm) AIR SPACE
AND BRICK TIES

MOISTURE BARRIER
APPLIED OVER GABLE
END SHEATHING AND
LAP NUDURA FORMS
AT EXTERIOR

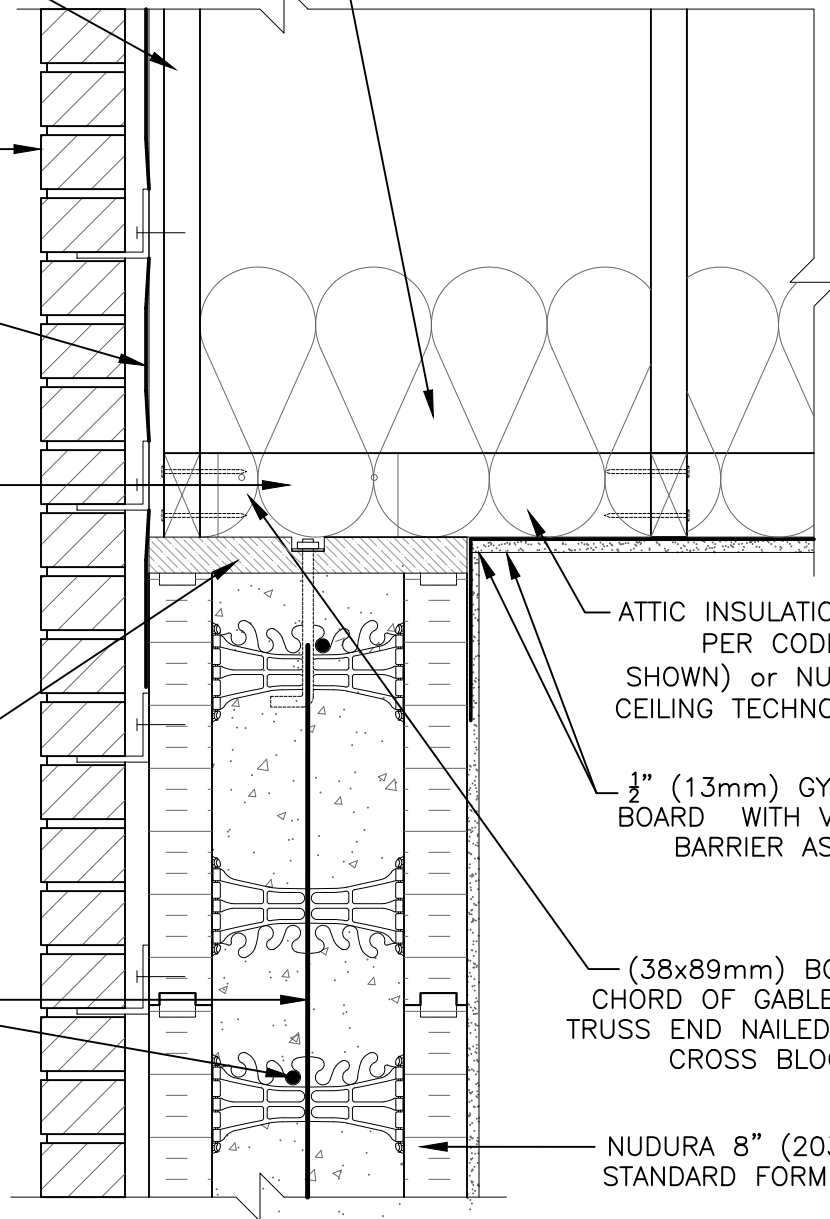
2x4" (38x89mm) CROSS
BLOCKING BETWEEN GABLE
END AND FIRST TRUSS AT
24" (600mm) o.c. OR AS
PER CODE. BLOCKING TOE
NAILED OR BRACKET
ANCHORED TO SILL PLATE
AS SPECIFIED

ENGINEERED FRAMING
SYSTEM BY PREBUCK LLC
OR FUNCTIONAL EQUIVALENT

ANCHORAGE AS PER CODE
OR SPECIFIED

HORIZ/VERT
REINFORCEMENT AS PER
CODE OR AS SPECIFIED

CROSS BRIDGING AT
FIRST TRUSSES AS
MANUFACTURERS
INSTALLATION
REQUIREMENTS



ATTIC INSULATION AS
PER CODE (AS
SHOWN) or NUDURA
CEILING TECHNOLOGY

1/2" (13mm) GYPSUM
BOARD WITH VAPOR
BARRIER AS PER
CODE

2x4"
(38x89mm) BOTTOM
CHORD OF GABLE
END TRUSS END
NAILED INTO
CROSS BLOCKING

NUDURA 8" (203mm)
STANDARD FORM UNIT

The architecture, engineering, and design of the project using the Nudura products are the responsibility of the project's design professional. All products and systems must comply with local building codes and standards. This detail is for general information and guidance only and Nudura specifically disclaims any liability for the use of this detail. The project design professional determines, in its sole discretion, whether this detail or a functionally equivalent detail is best suited for the project. This detail is subject to change without notice. Contact Nudura to ensure you have the most recent version.

Combustible Construction

Detail: Nudura 8" (203mm) Form Unit, Gable End Detail,
Trusses Parallel to Wall

File Name:

Drawn by: TVC

Scale: 1 : 8

Date: 6/3/2022

F8B02



Nudura Technical Support: 866-468-6299
International: +1 705-726-9499



Construction Products Group

tremcocpg.com