

NUDURA 6" (152mm)  
STANDARD FORM UNIT

1/2" (13mm) GYPSUM  
BOARD

HORIZ/VERT  
REINFORCEMENT AS PER  
CODE OR AS SPECIFIED

HOOK REINFORCEMENT  
AS PER CODE OR AS  
SPECIFIED

NUDURA  
WATERPROOF MEMBRANE

NUDURA FLOOR  
TECHNOLOGY

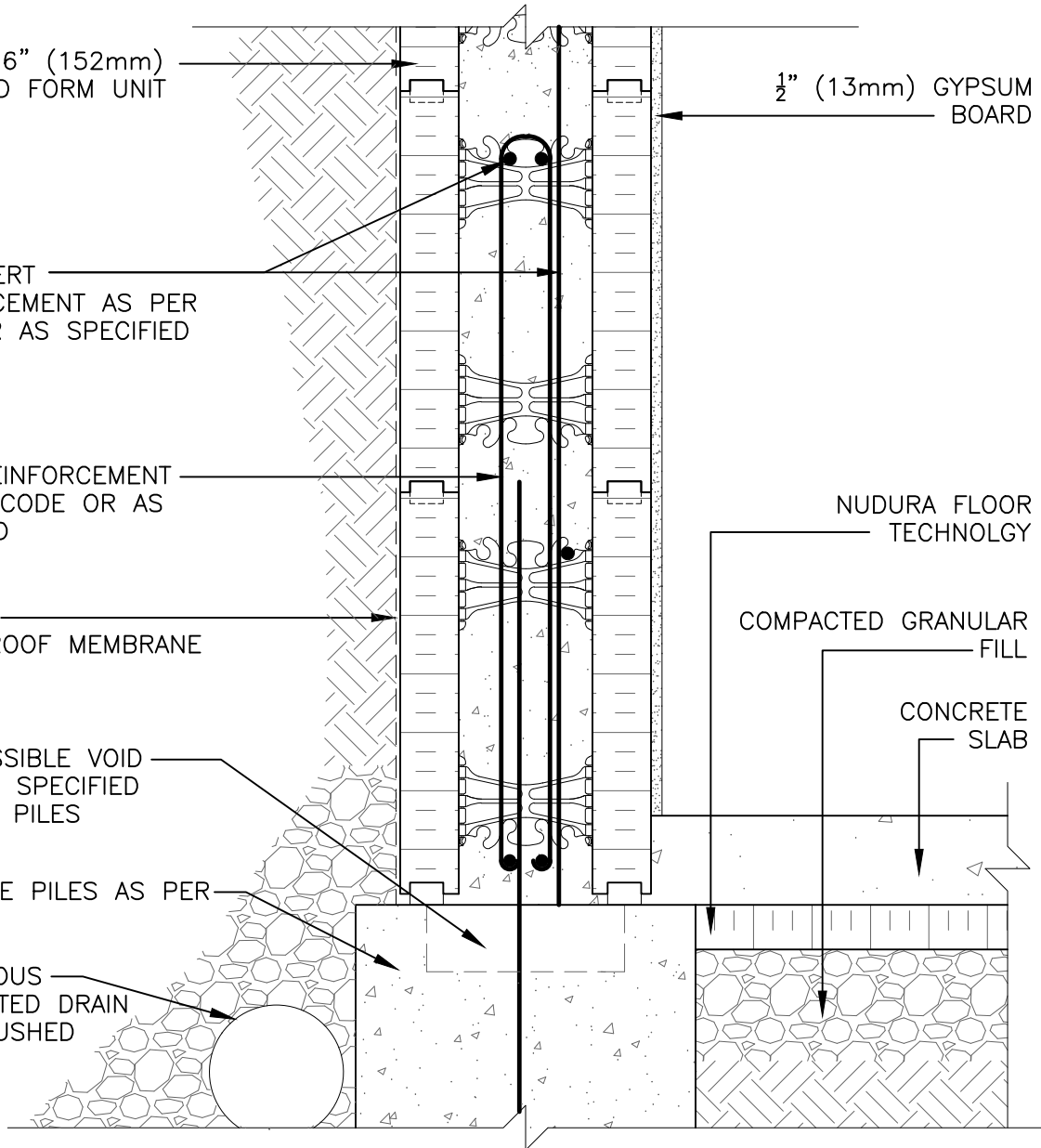
COMPACTED GRANULAR  
FILL

COMPRESSIBLE VOID  
FORM AS SPECIFIED  
BETWEEN PILES

CONCRETE  
SLAB

CONCRETE PILES AS PER  
CODE

CONTINUOUS  
PERFORATED DRAIN  
WITH CRUSHED  
STONE



**DISCLAIMER NOTICE:**  
SPECIFIC INFORMATION  
REQUIRED FOR COMPLIANCE  
WITH LOCAL CODES IS THE  
RESPONSIBILITY OF THE  
DESIGNER

*The architecture, engineering, and design of the project using the Nudura products are the responsibility of the project's design professional. All products and systems must comply with local building codes and standards. This detail is for general information and guidance only and Nudura specifically disclaims any liability for the use of this detail. The project design professional determines, in its sole discretion, whether this detail or a functionally equivalent detail is best suited for the project. This detail is subject to change without notice. Contact Nudura to ensure you have the most recent version.*

### Below Grade Construction

Detail: Nudura 6" (152mm) Form Unit Stem Wall On Piles With Insulated Concrete Slab Below Grade

File Name:

Drawn by: T.V

Scale: 1 : 8

Date: 11/30/2021

B6C09



Nudura Technical Support: 866-468-6299  
International: +1 705-726-9499

tremcocpg.com



Construction Products Group