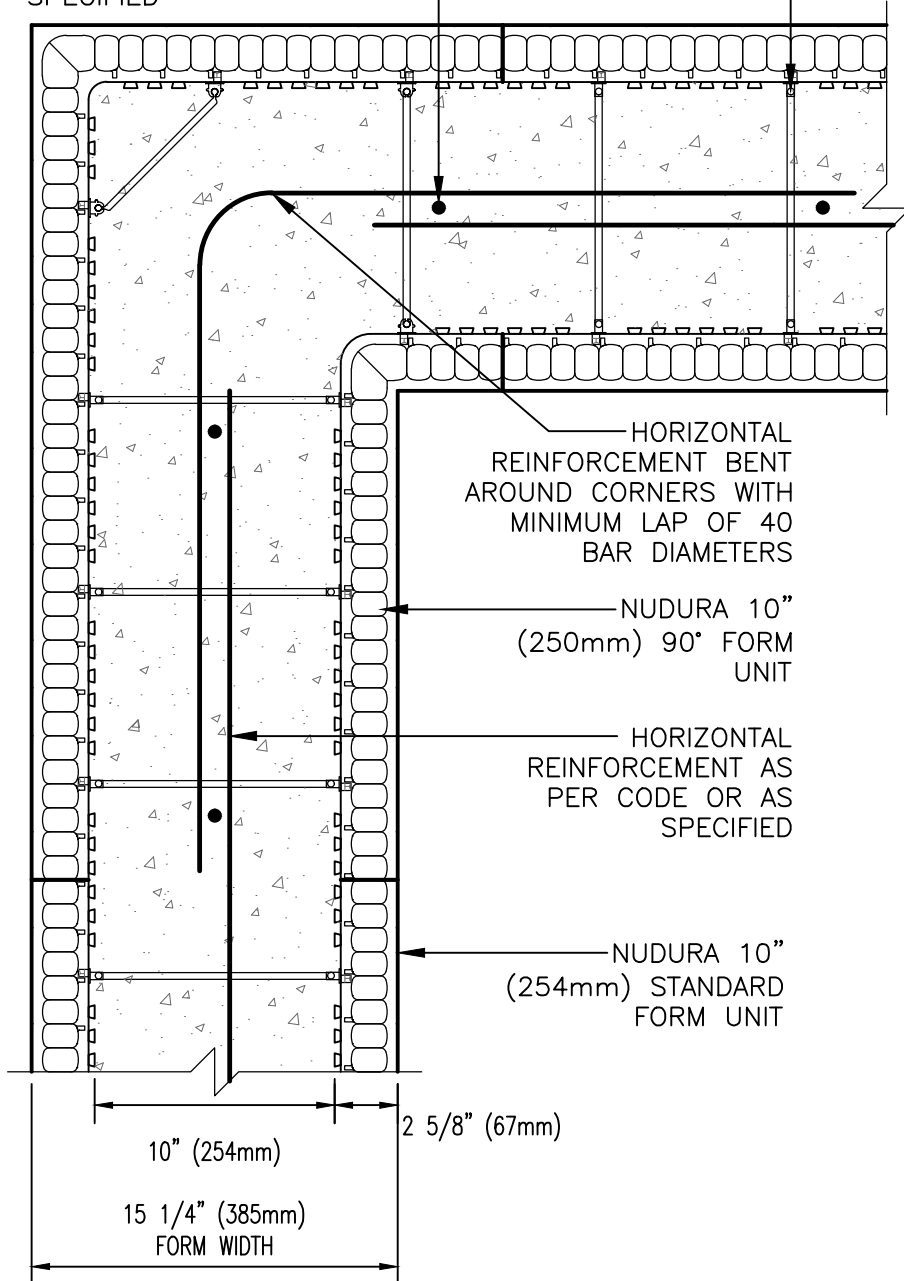


VERTICAL REINFORCEMENT  
AS PER CODE OR AS  
SPECIFIED

WEBS 8"  
(203mm) O.C.



**DISCLAIMER NOTICE:**  
SPECIFIC INFORMATION  
REQUIRED FOR COMPLIANCE  
WITH LOCAL CODES IS THE  
RESPONSIBILITY OF THE  
DESIGNER



**NUDURA**

INTEGRATED BUILDING TECHNOLOGY

*Building Value.*

NUDURA 10" (254mm)  
90° FORM REINFORCEMENT DETAIL  
PLAN VIEW

REV. NO.  
001 TV  
DATE:  
APR 2007  
DRAWN BY:  
J. NEILON

DWG NO.  
A10B03  
SCALE:  
1 : 8