

ONE SIDED FORM ASSEMBLY GUIDE

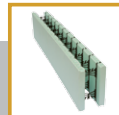
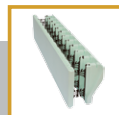
Standard Form Unit

Materials

- 1 NUDURA 96" x 18" (2438 mm x 457 mm) Standard Form Panel
- 1 NUDURA 96" x 18" (2438 mm x 457 mm) Plywood Panel
- 12 NUDURA Multi-Tie
- 24 NUDURA # 10 x 2" (51 mm) Hex Head Screws with Steel Flat Washer
- 12 NUDURA Insert Webs

Without Jig

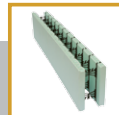
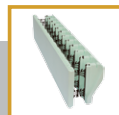
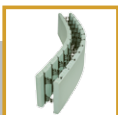
1. Align the Multi-tie with the pre-drilled holes in the plywood panel. Ensure the multi-ties are installed on the flat plywood surface.
2. Secure the multi-tie in position on the plywood panel using two (2) NUDURA #10 x 2" (51 mm) hex head screws with steel flat washers. Ensure the multi-tie remains in full vertical position when tightening the screws. Tightening one screw before the other is in position could result in the multi-tie twisting out of alignment. To eliminate the risk of the multi-tie twisting, it is recommended that both screws are secured in position before final tightening of each screw takes place. Set Clutch on drill to a light setting to prevent compressing the Multi-Tie into the surface of the Plywood Panel.
3. Repeat step #2 for all twelve (12) multi-tie positions along the face of the plywood panel.
4. Align the assembled plywood panel with a NUDURA Standard Panel, keeping the two panels apart the width of the intended NUDURA Insert web to be used.
5. Beginning at one end of the panels, slide one (1) NUDURA Insert web into the aligning capture lugs of the plywood and foam panel. Ensure the insert web is pushed down fully between the panels and is locked in position.
6. Continue sliding the insert webs into position down the length of the panels until all twelve (12) insert webs are inserted.
7. The form is now fully constructed and is ready to be placed in the wall.
8. Refer to Chapter 6.0 Installation Procedures in the NUDURA Installation Manual for proper installation procedures of the wall



ONE SIDED FORM ASSEMBLY GUIDE

With Jig

1. Begin by placing the installation jig on a study flat surface.
2. Place one (1) NUDURA Multi-tie in each of the twelve (12) slots along the top of the installation jig, ensuring each Multi-tie is lying flat and perfectly seated in position within the jig.
3. Install one (1) plywood panel in position in the jig on top of the Multi-tie's placed in the previous step. Make sure the plywood is positioned so that the pre-installed plastic spacers are facing down towards the Multi-Ties.
4. Using two (2) NUDURA #10 x 2" (51 mm) Hex Head screws per Multi-tie, secure the plywood panel to the backside of each Multi-tie. Ensure the screws are not over tightened by setting the drills clutch to a light setting to prevent compressing the Multi-Tie into the surface of the Plywood Panel.
5. With one (1) person at each end of the jig, lift the plywood directly out of the jig.
6. Align the assembled plywood panel with a NUDURA Standard Panel, keeping the two panels apart the width of the intended NUDURA Insert web to be used.
7. Beginning at one end of the panels, slide one (1) NUDURA Insert web into the aligning capture lugs of the plywood and foam panel. Ensure the insert web is pushed down fully between the panels and is locked in position.
8. Continue sliding the insert webs into position down the length of the panels until all twelve (12) insert webs are inserted.
9. The form is now fully constructed and is ready to be placed in the wall.
10. Refer to Chapter 6.0 Installation Procedures in the NUDURA Installation Manual for proper installation procedures of the forms.



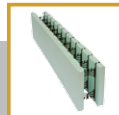
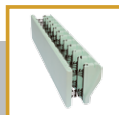
ONE SIDED FORM ASSEMBLY GUIDE

Concrete Outside Corner

Materials

- 1 NUDURA Interior 90° Corner Form Panel
- 1 NUDURA 96" x 18" (2438 mm x 457 mm) Plywood Panel Cut to Required Length
- 4 NUDURA Multi-Tie
- 8 NUDURA # 10 x 2" (51 mm) Hex Head Screws with Steel Flat Washer
- 4 NUDURA Insert Webs

1. Determine the length for the exterior Plywood Panels based on the required concrete core thickness (refer to tables below). The Plywood Panels must have one (1) factory end or be end cut 4" (102 mm) beyond pre-drilled fastener hole for web dimension to remain consistent.
2. Cut the plywood panels to the determined lengths.
3. Install the NUDURA Multi-Ties as outlined in the Standard Form Unit assembly instructions above.
4. Use the Interior 90° Unassembled Form Panel and insert webs, attach the cut Plywood Panels to the Interior Foam Panel.
5. Install NUDURA Insert Webs as outlined in the Standard Form Unit assembly instructions above.
6. The form is now fully constructed and is ready to be placed in the wall.
7. Refer to Chapter 6.0 Installation Procedures in the NUDURA Installation Manual for proper installation procedures of the forms. Additional form support is required at the connection of the Plywood Panels.



ONE SIDED FORM ASSEMBLY GUIDE

Concrete Outside Corner

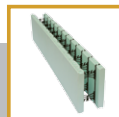
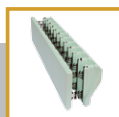
Materials

- 1 NUDURA Interior 90° Corner Form Panel
- 1 NUDURA 96" x 18" (2438 mm x 457 mm) Plywood Panel Cut to Required Length
- 4 NUDURA Multi-Tie
- 8 NUDURA # 10 x 2" (51 mm) Hex Head Screws with Steel Flat Washer
- 4 NUDURA Insert Webs

1. Determine the length for the exterior Plywood Panels based on the required concrete core thickness (refer to tables below). The Plywood Panels must have one (1) factory end or be end cut 4" (102 mm) beyond pre-drilled fastener hole for web dimension to remain consistent.
2. Cut the plywood panels to the determined lengths.
3. Install the NUDURA Multi-Ties as outlined in the Standard Form Unit assembly instructions above.
4. Use the Exterior 90° Unassembled Form Panel and insert webs, attach the cut Plywood Panels to the Interior Foam Panel.
5. Install NUDURA Insert Webs as outlined in the Standard Form Unit assembly instructions above.
6. The form is now fully constructed and is ready to be placed in the wall.
7. Refer to Chapter 6.0 Installation Procedures in the NUDURA Installation Manual for proper installation procedures of the forms. Additional form support is required at the connection of the Plywood Panels.

Removal of Plywood after concrete cure

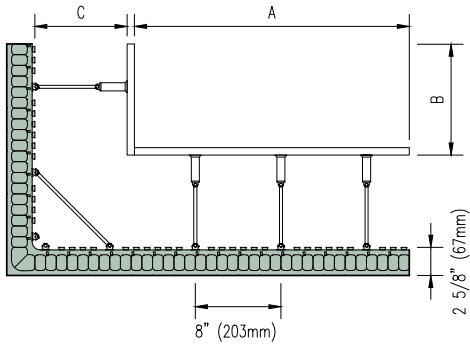
Remove the 24 fasteners from the form plywood; these panels can be re-used on the next pour. It helps to hit the form plywood with a hammer to loosen it from the cured concrete. The cavity left by the removal of the PlyPan can be left or easily filled with a parge coating.



NUDURA ONE SIDE SERIES

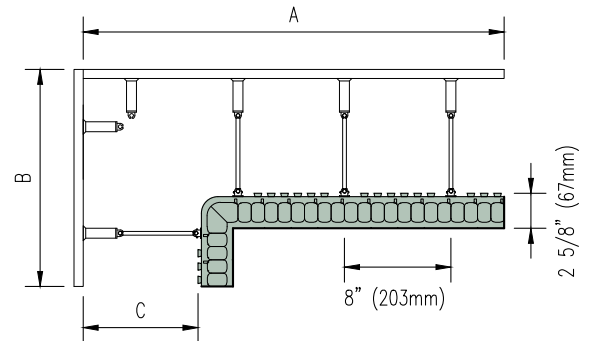
ONE SIDED FORM ASSEMBLY GUIDE

One Side Inside Corner



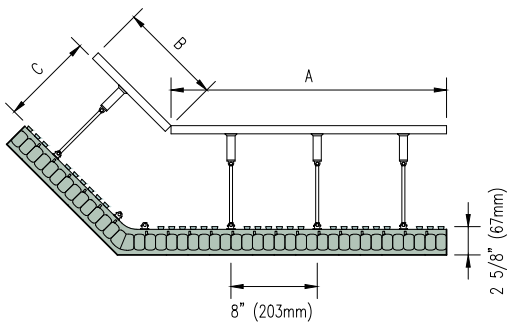
DIMENSIONS			
INSERT WEB DIMENSIONS	A	B	C
4" (100mm)	2'-3 5/8" (701mm)	1'-0 3/8" (314mm)	6 5/8" (168mm)
6" (150mm)	2'-1 5/8" (650mm)	10 3/8" (263mm)	8 5/8" (219mm)
8" (200mm)	1'-11 5/8" (600mm)	8 3/8" (212mm)	10 5/8" (270mm)
10" (250mm)	1'-9 5/8" (549mm)	6 3/8" (161mm)	12 5/8" (321mm)
12" (300mm)	-	-	-

One Side Outside Corner



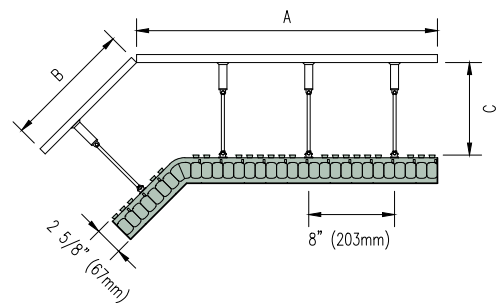
DIMENSIONS			
INSERT WEB DIMENSIONS	A	B	C
4" (100mm)	2'-5 5/8" (752mm)	1'-2 3/8" (366mm)	6 5/8" (168mm)
6" (150mm)	2'-7 5/8" (803mm)	1'-4 3/8" (416mm)	8 5/8" (219mm)
8" (200mm)	2'-9 5/8" (854mm)	1'-6 3/8" (467mm)	10 5/8" (270mm)
10" (250mm)	2'-11 5/8" (905mm)	1'-8 3/8" (518mm)	12 5/8" (321mm)
12" (300mm)	3'-1 5/8" (956mm)	1'-10 3/8" (569mm)	14 5/8" (371mm)

One Side Inside 45° Corner



DIMENSIONS			
INSERT WEB DIMENSIONS	A	B	C
4" (100mm)	2'-2 3/8" (670mm)	10 3/8" (264mm)	6 5/8" (168mm)
6" (150mm)	2'-1 1/2" (649mm)	9 1/2" (243mm)	8 5/8" (219mm)
8" (200mm)	2'-0 3/4" (628mm)	8 3/8" (222mm)	10 5/8" (270mm)
10" (250mm)	1'-11 7/8" (607mm)	7 7/8" (201mm)	12 5/8" (321mm)
12" (300mm)	1'-11 1/8" (586mm)	7 1/8" (180mm)	14 5/8" (371mm)

One Side Outside 45° Corner



DIMENSIONS			
INSERT WEB DIMENSIONS	A	B	C
4" (100mm)	2'-3 1/4" (691mm)	11 1/4" (285mm)	6 5/8" (168mm)
6" (150mm)	2'-4" (712mm)	12" (300mm)	8 5/8" (219mm)
8" (200mm)	2'-4 7/8" (733mm)	1'-0 7/8" (327mm)	10 5/8" (270mm)
10" (250mm)	2'-5 3/4" (754mm)	1'-1 3/4" (348mm)	12 5/8" (321mm)
12" (300mm)	2'-6 1/2" (775mm)	1'-3 1/2" (369mm)	14 5/8" (371mm)

