

NUDURA 10" (254mm) STANDARD FORM UNIT

WET SET DOWELS TO MATCH VERTICAL REINFORCEMENT BETWEEN POUR OR AS SPECIFIED

HORIZ/VERT REINFORCEMENT AS PER CODE OR AS SPECIFIED

BRICK VENEER c/w 1" (25mm) AIR SPACE AND BRICK TIES

FORM PANELS c/w INSERT WEBS-CUT TO SUIT FLOOR CONNECTION-ADDITIONAL FORM SUPPORT AS REQUIRED

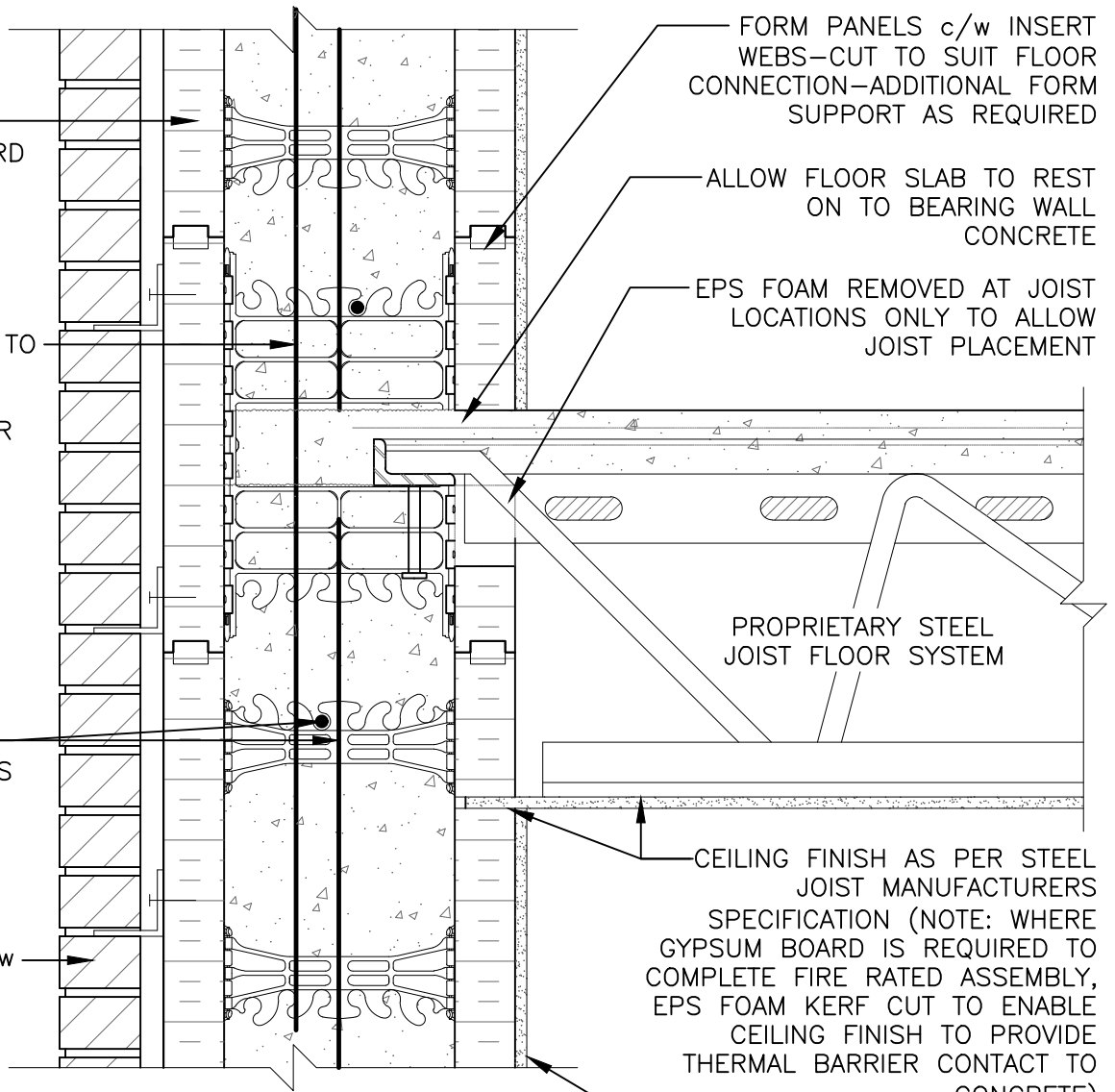
ALLOW FLOOR SLAB TO REST ON TO BEARING WALL CONCRETE

EPS FOAM REMOVED AT JOIST LOCATIONS ONLY TO ALLOW JOIST PLACEMENT

PROPRIETARY STEEL JOIST FLOOR SYSTEM



CEILING FINISH AS PER STEEL JOIST MANUFACTURERS SPECIFICATION (NOTE: WHERE GYPSUM BOARD IS REQUIRED TO COMPLETE FIRE RATED ASSEMBLY, EPS FOAM KERF CUT TO ENABLE CEILING FINISH TO PROVIDE THERMAL BARRIER CONTACT TO CONCRETE)

1/2" (13mm) GYPSUM BOARD



The architecture, engineering, and design of the project using the Nudura products are the responsibility of the project's design professional. All products and systems must comply with local building codes and standards. This detail is for general information and guidance only and Nudura specifically disclaims any liability for the use of this detail. The project design professional determines, in its sole discretion, whether this detail or a functionally equivalent detail is best suited for the project. This detail is subject to change without notice. Contact Nudura to ensure you have the most recent version.

**Non-Combustible Construction**

 Nudura Technical Support: 866-468-6299 International: +1 705-726-9499	Detail: Nudura 10" (254mm) Form Unit, Steel Joist Floor System, Intermediate Floor Connection, Exterior Bearing Wall, Brick Veneer Finish		File Name:	 Construction Products Group
	Drawn by: TVC	Scale: 1 : 8	Date: 12/17/2021	