

NUDURA 6" (152mm)  
STANDARD FORM UNIT

HORIZ/VERT  
REINFORCEMENT AS PER  
CODE OR AS SPECIFIED

ADDITIONAL BRACING  
REQUIRED DURING  
FLOOR SLAB POUR

WET SET DOWELS  
FIELD BENT INTO SLAB  
AS SPECIFIED

WET SET DOWELS TO  
MATCH VERTICAL  
REINFORCEMENT BETWEEN  
POUR OR AS SPECIFIED

BRICK VENEER c/w 1"  
(25mm) AIR SPACE  
AND BRICK TIES

1/2" (13mm) GYPSUM  
BOARD

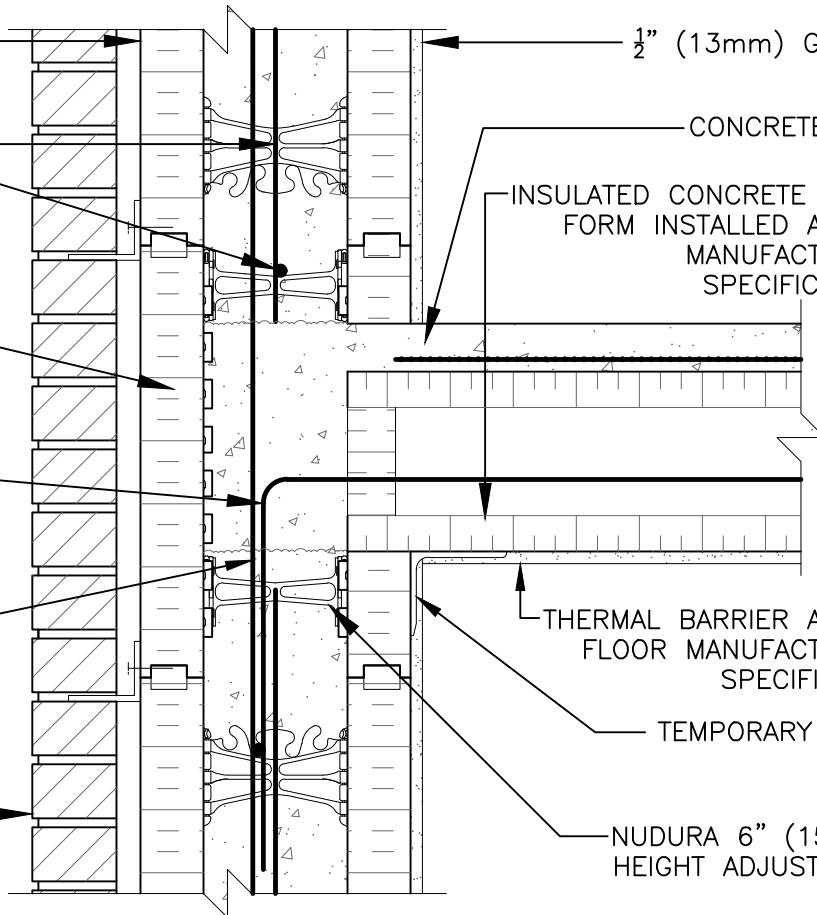
CONCRETE SLAB

INSULATED CONCRETE FLOOR  
FORM INSTALLED AS PER  
MANUFACTURERS  
SPECIFICATIONS

THERMAL BARRIER AS PER  
FLOOR MANUFACTURERS  
SPECIFICATION

TEMPORARY STEEL  
ANGLE

NUDURA 6" (152mm)  
HEIGHT ADJUSTER TIE



The architecture, engineering, and design of the project using the Nudura products are the responsibility of the project's design professional. All products and systems must comply with local building codes and standards. This detail is for general information and guidance only and Nudura specifically disclaims any liability for the use of this detail. The project design professional determines, in its sole discretion, whether this detail or a functionally equivalent detail is best suited for the project. This detail is subject to change without notice. Contact Nudura to ensure you have the most recent version.

### Non-Combustible Construction

Detail: Nudura 6" (152mm) Form Unit, ICFS Connection, ICFS Resting on Form, Exterior Bearing Wall, Brick Veneer Finish

File Name:

Drawn by: TVC

Scale: 1 : 8

Date: 12/16/2021

D6D06



Nudura Technical Support: 866-468-6299  
International: +1 705-726-9499



Construction Products Group

tremcocpg.com