

NUDURA 8" (203mm)
STANDARD FORM UNIT

WET SET DOWELS TO
MATCH VERTICAL
REINFORCEMENT
BETWEEN POUR OR
AS SPECIFIED

V-CLIP WALL PANEL
ANCHOR

EXTERIOR FINISH AS
SPECIFIED

FORM PANELS c/w INSERT
WEBS-CUT TO SUIT FLOOR
CONNECTION-ADDITIONAL
FORM SUPPORT AS
REQUIRED

HORIZ/VERT
REINFORCEMENT AS PER
CODE OR AS SPECIFIED

1/2" (13mm) GYPSUM
BOARD

FINISHED CONCRETE
TOPPING

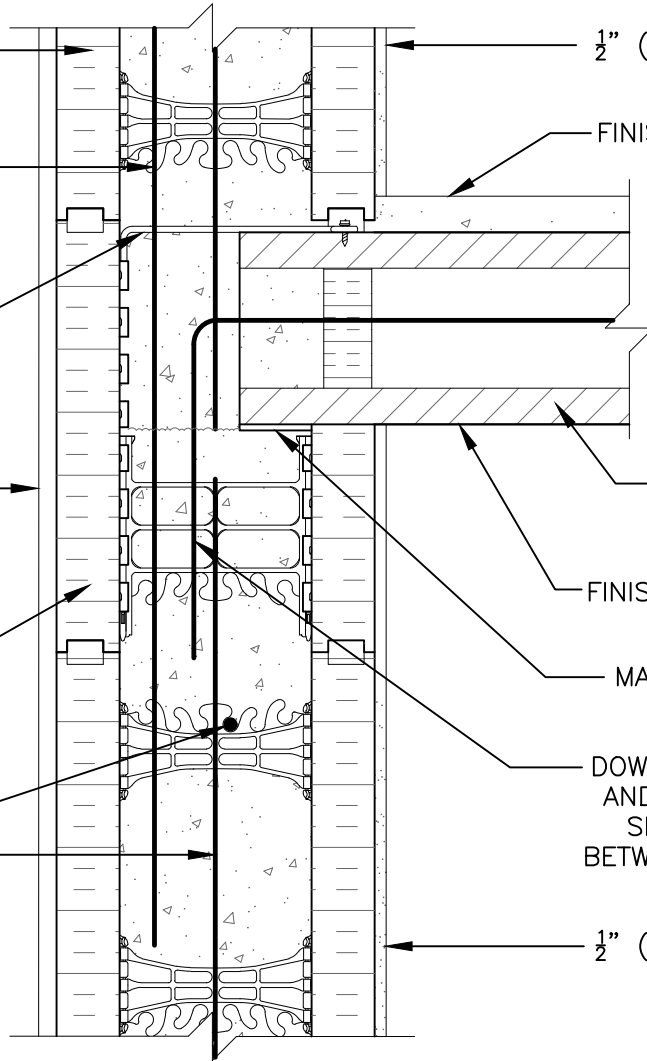
HOLLOW CORE
PRECAST SLAB

FINISH AS SPECIFIED

MASONITE BEARING
PAD

DOWELS FIELD BENT
AND GROUTED INTO
SHEAR KEY JOINT
BETWEEN PANELS AS
SPECIFIED

1/2" (13mm) GYPSUM
BOARD



The architecture, engineering, and design of the project using the Nudura products are the responsibility of the project's design professional. All products and systems must comply with local building codes and standards. This detail is for general information and guidance only and Nudura specifically disclaims any liability for the use of this detail. The project design professional determines, in its sole discretion, whether this detail or a functionally equivalent detail is best suited for the project. This detail is subject to change without notice. Contact Nudura to ensure you have the most recent version.

Non-Combustible Construction

Detail: Nudura 8" (203mm) Form Unit, Hollow Core Precast Slab, Intermediate Floor Connection, Exterior Bearing Wall Detail, Exterior Finish Specified

File Name:

Drawn by: TVC

Scale: 1 : 8

Date: 12/16/2021

D8A12



Nudura Technical Support: 866-468-6299
International: +1 705-726-9499



Construction Products Group

tremcocpg.com