

NUDURA 8" (203mm)
STANDARD FORM UNIT

HORIZ/VERT
REINFORCEMENT AS PER
CODE OR AS SPECIFIED

ADDITIONAL BRACING
REQUIRED DURING
FLOOR SLAB POUR

WET SET DOWELS
FIELD BENT INTO SLAB
AS SPECIFIED

WET SET DOWELS TO
MATCH VERTICAL
REINFORCEMENT BETWEEN
POUR OR AS SPECIFIED

BRICK VENEER c/w 1"
(25mm) AIR SPACE
AND BRICK TIES

1/2" (13mm) GYPSUM
BOARD

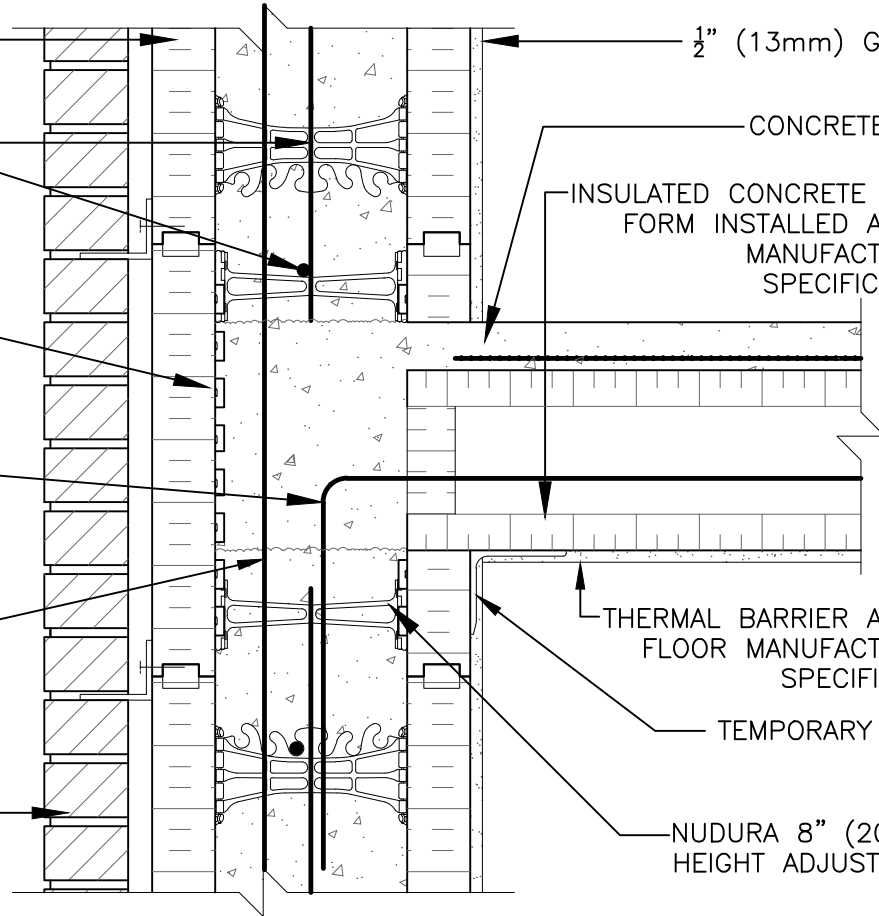
CONCRETE SLAB

INSULATED CONCRETE FLOOR
FORM INSTALLED AS PER
MANUFACTURERS
SPECIFICATIONS

THERMAL BARRIER AS PER
FLOOR MANUFACTURERS
SPECIFICATION

TEMPORARY STEEL
ANGLE

NUDURA 8" (203mm)
HEIGHT ADJUSTER TIE



The architecture, engineering, and design of the project using the Nudura products are the responsibility of the project's design professional. All products and systems must comply with local building codes and standards. This detail is for general information and guidance only and Nudura specifically disclaims any liability for the use of this detail. The project design professional determines, in its sole discretion, whether this detail or a functionally equivalent detail is best suited for the project. This detail is subject to change without notice. Contact Nudura to ensure you have the most recent version.

Non-Combustible Construction

Detail: Nudura 8" (203mm) Form Unit, ICFS Connection, ICFS Resting on Form, Exterior Side Wall, Brick Veneer Finish

File Name:

Drawn by: TVC

Scale: 1 : 8

Date: 12/16/2021

D8D04



Nudura Technical Support: 866-468-6299
International: +1 705-726-9499

tremcocpg.com



Construction Products Group