

NUDURA 'EZ' BUCK w/  
DIMENSIONAL LUMBER AS SHOWN

ALTERNATIVE BUCK METHODS  
APPLIED:

WOOD, VINYL, STEEL, ETC. BUCK  
MATERIAL FASTENED TO  
CONCRETE w/ EMBEDDED SPIRAL  
NAILS, BOLTS, SCREWS IN  
STAGGERED PATTERN, OR AS PER  
MANUFACTURERS SPECIFICATION

1/2" (13mm) GYPSUM  
BOARD

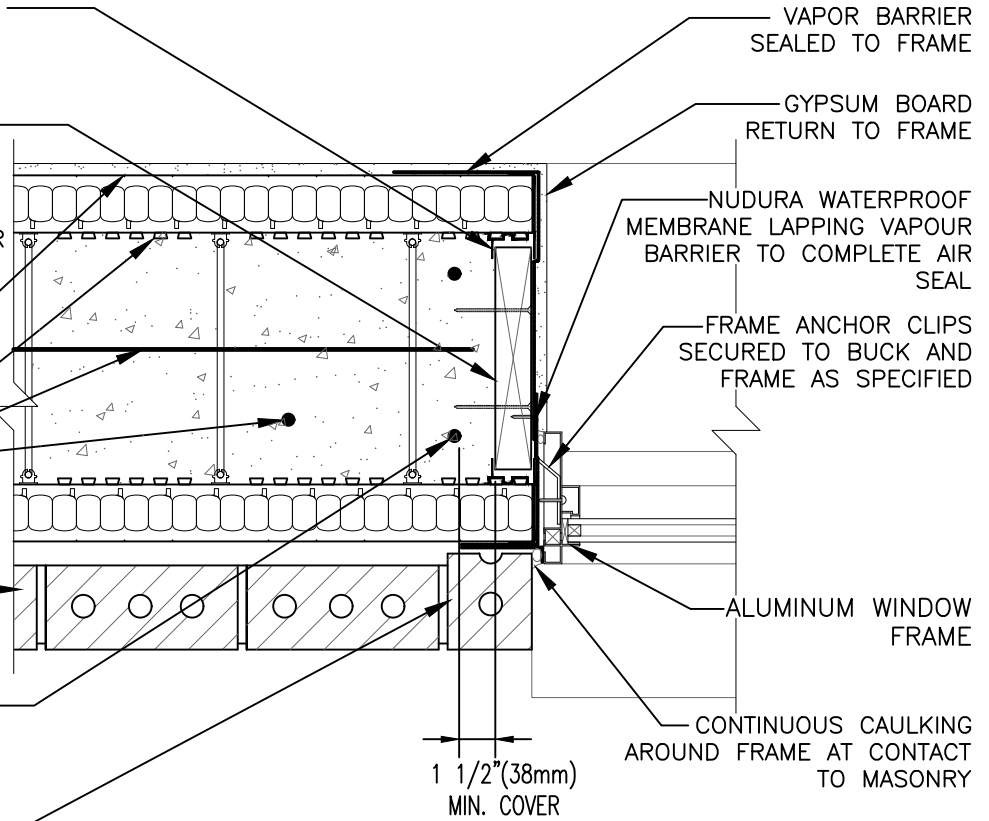
NUDURA 10" (254mm)  
STANDARD FORM UNIT

HORIZ/VERT  
REINFORCEMENT AS PER  
CODE OR AS SPECIFIED

BRICK VENEER c/w 1"  
(25mm) AIR SPACE AND  
BRICK TIES

OPENING REINFORCEMENT AS  
PER CODE OR AS SPECIFIED

BRICK RETURN TO COVER AIR  
SPACE



VAPOR BARRIER  
SEALED TO FRAME

GYPSUM BOARD  
RETURN TO FRAME

NUDURA WATERPROOF  
MEMBRANE LAPPING VAPOUR  
BARRIER TO COMPLETE AIR  
SEAL

FRAME ANCHOR CLIPS  
SECURED TO BUCK AND  
FRAME AS SPECIFIED

ALUMINUM WINDOW  
FRAME

CONTINUOUS CAULKING  
AROUND FRAME AT CONTACT  
TO MASONRY

1 1/2" (38mm)  
MIN. COVER

THIS DETAIL IS SUITABLE FOR NON-COMBUSTIBLE 1 TO 3 STOREY HIGH APPLICATIONS AS PERMITTED UNDER LOCAL CODES; FOR WINDOWS IN BRICK CLAD MULTI-STOREY APPLICATIONS, REFER TO DETAIL E10D06 UNDER THIS SECTION

The architecture, engineering, and design of the project using the Nudura products are the responsibility of the project's design professional. All products and systems must comply with local building codes and standards. This detail is for general information and guidance only and Nudura specifically disclaims any liability for the use of this detail. The project design professional determines, in its sole discretion, whether this detail or a functionally equivalent detail is best suited for the project. This detail is subject to change without notice. Contact Nudura to ensure you have the most recent version.

**Non-Combustible Construction**



Detail: Nudura 10" (254mm) Form Unit, Window Jamb Detail,  
Aluminum Framed Window, Wood Rough Buck, Brick Veneer Finish

Drawn by: TVC

Scale: 1 : 8

Date: 5/24/2022

File Name:

E10D04



tremcocpg.com