

NUDURA 12" (305mm)
STANDARD FORM UNIT

DECORATIVE EPS FOAM
TRIM (HEAD AND SILL)
APPLIED TO NUDURA
FORM USING EPS
COMPATIBLE ADHESIVE

FASTEN STUCCO MESH TO
BUCK PRIOR TO PLACING
BUCK AT HEAD CONDITION

WINDOW FRAMING BY
OTHERS

FOR MULTI-STOREY
APPLICATIONS, EIFS
LAMINA TO LAP BACK
AROUND BUCK TO
LINK w/ CONCRETE

FOAM BACKER ROD
AND CONTINUOUS
CAULKING AROUND
FRAME

2x2" (38x38mm)
ROUGH NAILER

OPENING
REINFORCEMENT AS PER
CODE OR AS SPECIFIED

DIRECT APPLIED
ACRYLIC FINISH

1/2" (13mm) GYPSUM
BOARD

HORIZ/VERT
REINFORCEMENT AS PER
CODE OR AS SPECIFIED

LINTEL
REINFORCEMENT AS
PER CODE OR AS
SPECIFIED

1 1/2"
(38mm) MIN.
COVER

VAPOR BARRIER c/w
FOAM ROD/CAULK OR
SEAL TO INTERIOR EDGE
OF FRAME

WOOD, VINYL, STEEL, ETC.
BUCK MATERIAL FASTENED
TO CONCRETE
w/ EMBEDDED SPIRAL
NAILS, BOLTS, SCREWS IN
STAGGERED PATTERN, OR
AS PER MANUFACTURERS
SPECIFICATION

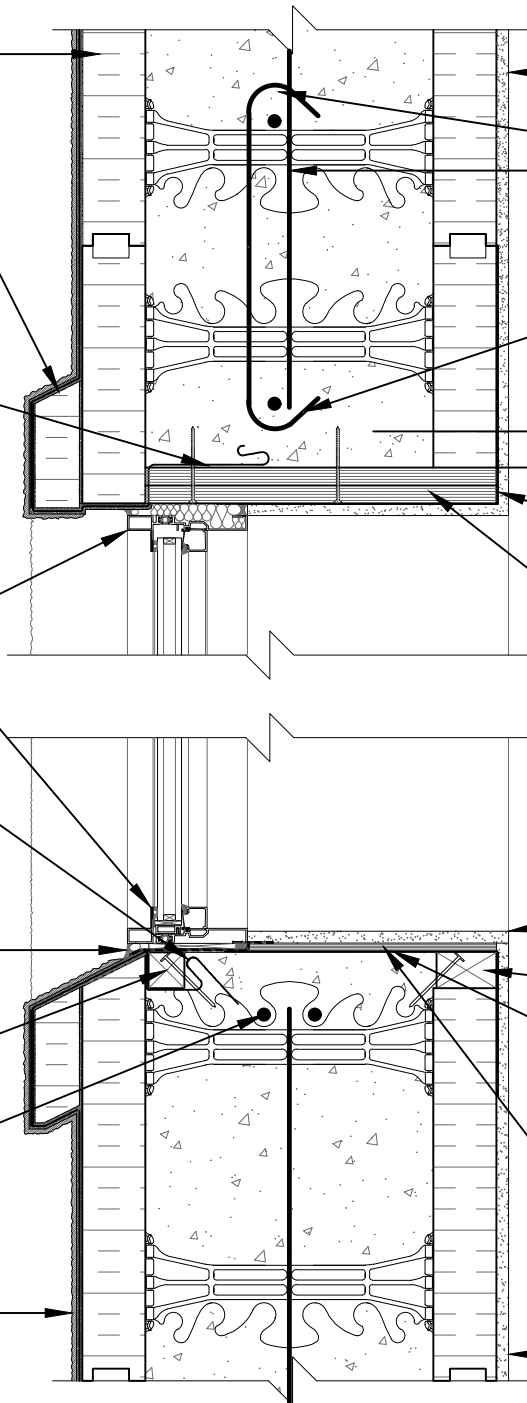
GYPSUM BOARD
RETURN TO FRAME

2x3" (38x64mm)
ROUGH NAILER

VAPOR BARRIER SEALED
TO FRAME AT SILL
CONDITION



COMPRESSIBLE AIR
SEAL GASKET APPLIED
TO FULL LENGTH REAR
EDGE OF SILL PRIOR
TO FRAME INSTALLATION

1/2" (13mm) GYPSUM
BOARD



The architecture, engineering, and design of the project using the Nudura products are the responsibility of the project's design professional. All products and systems must comply with local building codes and standards. This detail is for general information and guidance only and Nudura specifically disclaims any liability for the use of this detail. The project design professional determines, in its sole discretion, whether this detail or a functionally equivalent detail is best suited for the project. This detail is subject to change without notice. Contact Nudura to ensure you have the most recent version.

Non-Combustible Construction

 <p>Nudura Technical Support: 866-468-6299 International: +1 705-726-9499</p>	Detail: Nudura 12" (305mm) Form Unit, Window Head/Sill Detail, Aluminum Framed Window, Buck Mounted, Exterior Finish as Specified	File Name: E12D01	 <p>Construction Products Group</p>
	Drawn by: TVC	Scale: 1 : 8	