

NUDURA 6" (152mm) STANDARD FORM UNIT

1/2" (13mm) GYPSUM BOARD

WOOD SIDING NAILED TO STRAPPING AS SPECIFIED

HORIZ/VERT REINFORCEMENT AS PER CODE OR AS SPECIFIED

1"x2" (25mm x 51mm) WOOD STRAPPING SCREWED TO FASTENING STRIPS AS SPECIFIED

LINTEL REINFORCEMENT AS PER CODE OR AS SPECIFIED

THROUGH WALL FLASHING AS PER CODE OR AS SPECIFIED

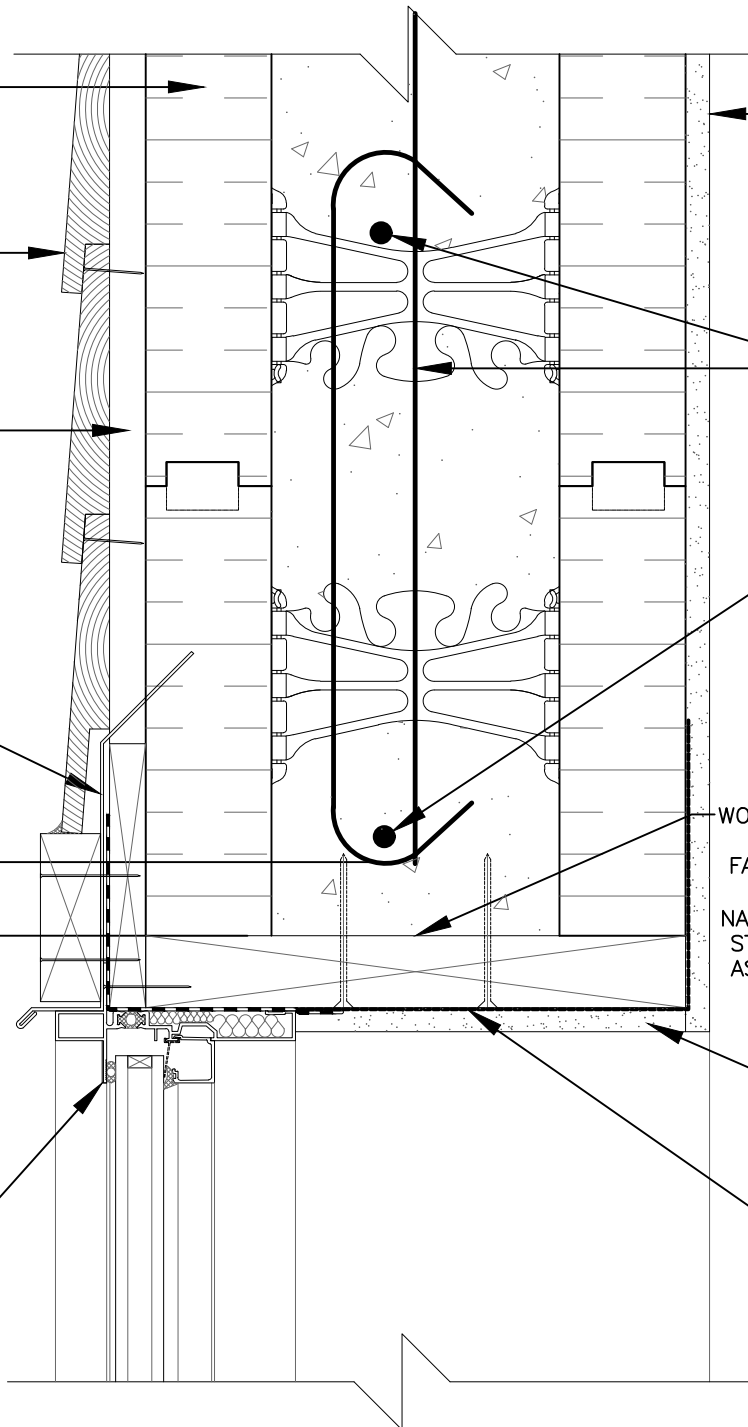
WOOD, VINYL, STEEL, ETC. BUCK MATERIAL FASTENING TO CONCRETE w/ EMBEDDED SPIRAL NAILS, BOLTS, SCREWS IN STAGGERED PATTERN, OR AS PER MANUFACTURERS SPECIFICATION

1 1/2" (38mm) MIN. COVER

GYPSUM BOARD RETURN TO FRAME

VAPOR BARRIER SEALED TO INTERIOR EDGE OF FRAME

WINDOW FRAMING BY OTHERS



The architecture, engineering, and design of the project using the Nudura products are the responsibility of the project's design professional. All products and systems must comply with local building codes and standards. This detail is for general information and guidance only and Nudura specifically disclaims any liability for the use of this detail. The project design professional determines, in its sole discretion, whether this detail or a functionally equivalent detail is best suited for the project. This detail is subject to change without notice. Contact Nudura to ensure you have the most recent version.

Non-Combustible Construction



Nudura Technical Support: 866-468-6299
International: +1 705-726-9499

Detail: Nudura 6" (152mm) Form Unit, Window Head Detail, Aluminum Framed Window, Wood Rough Buck, Horizontal Wood Siding

Drawn by: KS

Scale: 1 : 4

Date: 12/29/2021

File Name:

H6B07



Construction Products Group

tremcocpg.com