

1/2" (13mm)
GYPSUM BOARD

NUDURA 6"
(152mm)
STANDARD FORM
UNIT

HORIZ/VERT
REINFORCEMENT
AS PER CODE OR
AS SPECIFIED

OPENING
REINFORCEMENT
AS PER CODE OR
AS SPECIFIED

1"x2" (25mm x 51mm)
WOOD STRAPPING
SCREWED TO FASTENING
STRIPS AS SPECIFIED

WOOD SIDING NAILED
TO STRAPPING AS
SPECIFIED

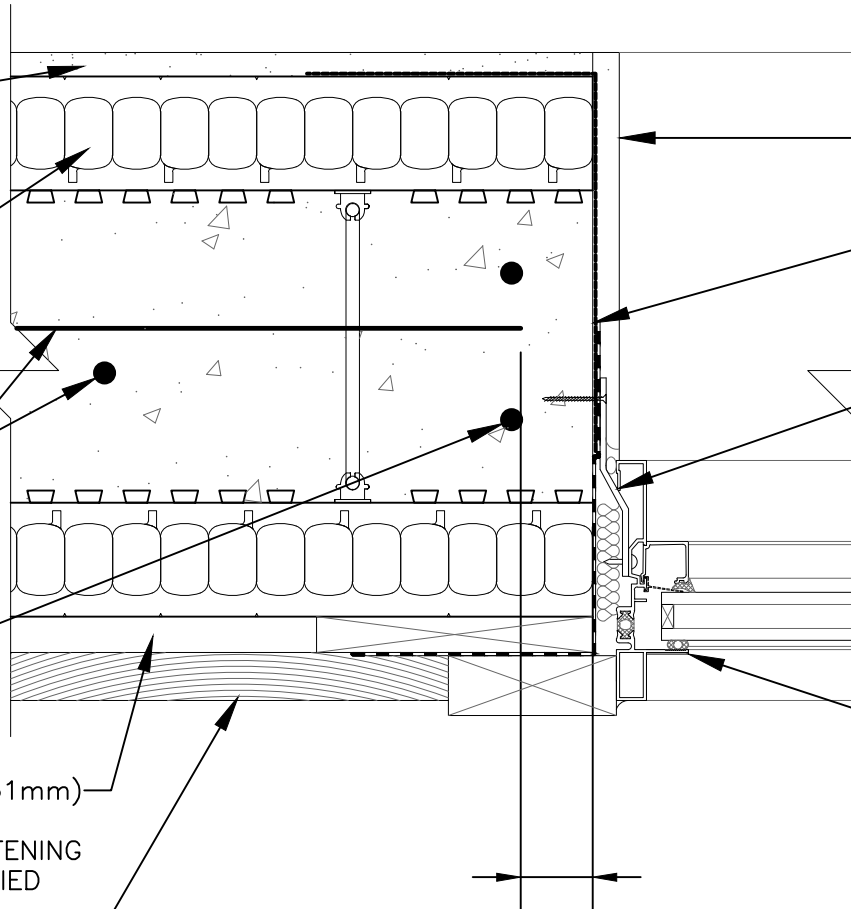
GYPSUM BOARD
RETURN TO FRAME

VAPOR BARRIER
SEALED TO
INTERIOR EDGE OF
FRAME

ALUMINUM JAMB
ANCHOR CLIPS

WINDOW FRAME
BY OTHERS

1 1/2"
(38mm)MIN.
COVER



The architecture, engineering, and design of the project using the Nudura products are the responsibility of the project's design professional. All products and systems must comply with local building codes and standards. This detail is for general information and guidance only and Nudura specifically disclaims any liability for the use of this detail. The project design professional determines, in its sole discretion, whether this detail or a functionally equivalent detail is best suited for the project. This detail is subject to change without notice. Contact Nudura to ensure you have the most recent version.

Non-Combustible Construction

Detail: Nudura 6" (152mm) Form Unit, Window Jamb Detail,
Aluminum Framed Window, Concrete Mounted, Horizontal Wood Siding

File Name:

Drawn by: KS

Scale: 1 : 4

Date: 12/29/2021

H6B12



Nudura Technical Support: 866-468-6299
International: +1 705-726-9499

tremcocpg.com



Construction Products Group