

**BXUVC.W012
Fire-resistance Ratings**

Page Bottom

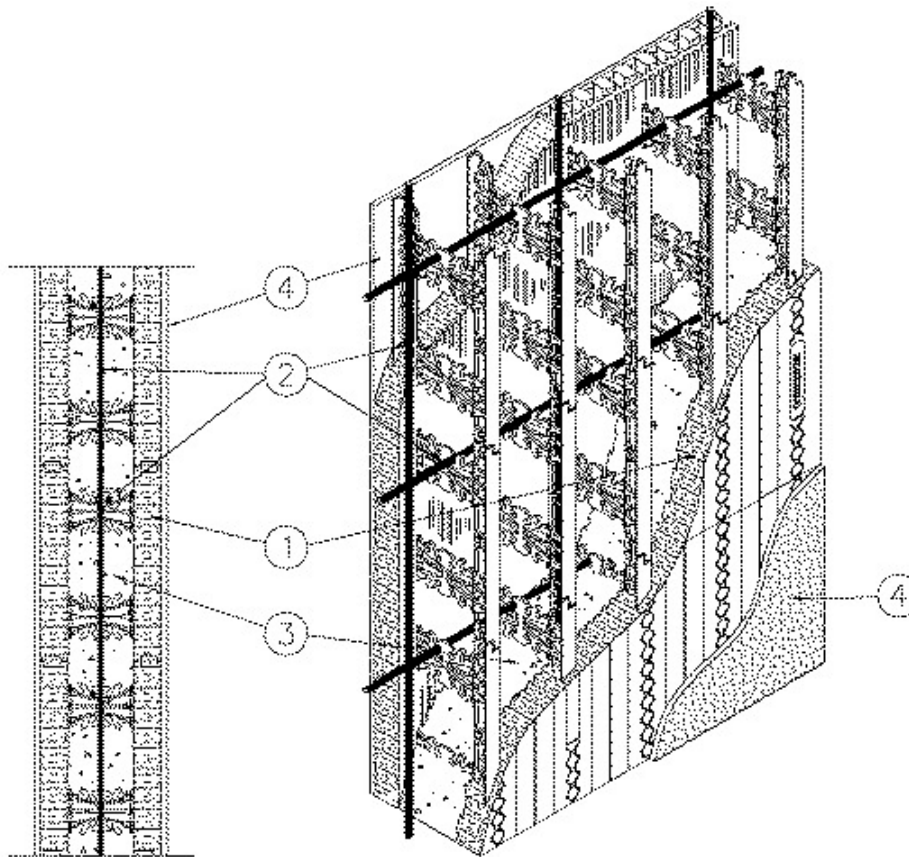
Fire-resistance Ratings

See General Information for Fire-resistance Ratings

Design No. W012

February 18, 2014

Assembly Rating - 2 or 4 h (See item 1)



Bearing Wall

- 1. **Insulated Concrete Forms** — (CDELCO). Standard form units comprised of two 2440 by 457 mm by 67 mm thick expanded polystyrene (EPS) panels linked by polypropylene webs at 200 mm OC. The minimum width of the ICF cavity is 102 mm as shown in the table below. Height adjusters consist of 813 mm long, 76 mm high and 67 mm thick flat EPS panels. End caps vary with wall thickness from 102 mm to 305 mm wide, 457 mm high and 60 mm thick flat EPS panels. Assembly ratings depend on width of ICF cavity as shown in table below:

Assembly Rating, h	Min. ICF Cavity Thickness, mm
2	102
4	152

NUDURA CORP

2. **Reinforcing Steel** — 10M reinforcing bars inserted horizontally into each ICF course within polypropylene web notches. Reinforcing bars placed vertically at 400 mm OC into centre of ICFs.

3. **Sand-Limestone Concrete** — 2300 ± 50 kg/m³ density, 20 MPa nominal compressive strength.

4. **Gypsum Wallboard** — Min. 12.7 mm thick, min. 6.6 kg/m², 1220 mm wide, Listed or unlisted gypsum wallboard with paper or fiberglass facing. Gypsum wallboard fastened to flanges of polypropylene webs with min. 50 mm long drywall screws at 425 mm OC vertically and 200 mm OC horizontally. When gypsum board is greater than 12.7 mm thick, screw length shall be increased to provide min. 37.3 mm penetration into the polypropylene webs. Joints covered with joint compound, covered with joint tape, and covered with an additional coat of joint compound. Screwheads covered with joint compound. When the exterior face of the exterior wall is required to be of noncombustible materials, the gypsum wallboard may be substituted with min. 12.7 mm thick, min. 6.6 kg/m², 1220 mm wide, exterior grade, Listed or unlisted non-combustible gypsum wallboard installed as specified above using galvanized exterior grade screws. When the Insulated Concrete Wall is used as an exterior wall, in order for the Fire Resistance Rating to remain valid from both sides of the wall, the gypsum wallboard on the exterior face of the exterior wall may be substituted with minimum 25 mm thick concrete or masonry mechanically fastened to the supporting Insulated Concrete Wall independent of the EPS insulation.

Last Updated on 2014-02-18

[Questions?](#)

[Print this page](#)

[Terms of Use](#)

[Page Top](#)

Copyright © 2013 Underwriters Laboratories of Canada Inc.

When the UL Leaf Mark is on the product, or when the word "Environment" is included in the UL Mark, please search the [UL Environment database](#) for additional information regarding this product's certification.

The appearance of a company's name or product in this database does not in itself assure that products so identified have been manufactured under ULC's Follow-Up Service. Only those products bearing the ULC Mark should be considered to be Listed and covered under ULC's Follow-Up Service. Always look for the Mark on the product.

ULC permits the reproduction of the material contained in the ULC Online Directories subject to the following conditions: 1. The Guide Information, Designs and/or Listings (files) must be presented in their entirety and in a non-misleading manner, without any manipulation of the data (or drawings). 2. The statement "Reprinted from the ULC Online Directories with permission from Underwriters Laboratories of Canada Inc." must appear adjacent to the extracted material. In addition, the reprinted material must include a copyright notice in the following format: "Copyright © 2013 Underwriters Laboratories of Canada Inc."

An independent organization working for a safer world with integrity, precision and knowledge.

