

HILTI ANCHORS TO BE SIZED AS PER TABLE

**NOTE:** MAINTAIN u/s OF ANCHOR SHAFT 2" (50mm) min. CLEARANCE FROM WEBS AND 1"(25mm) COVER ALL AROUND

FLASHING MATERIAL AND WEEP HOLES AS SPEC'D PER CODE

STEEL ANGLE (SEE TABLE)

BRICK VENEER w/BRICK TIES AS PER CODE

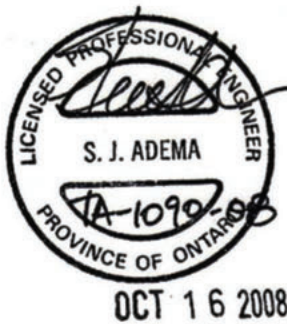
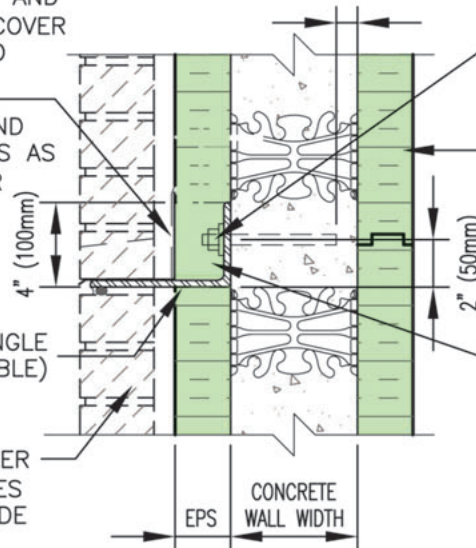
1" (25.4mm) CONC. COVER

WEDGE ANCHOR (SEE TABLE)

NUDURA STANDARD FORM UNIT

REMOVE EXISTING EPS AND REPLACE AFTER INSTALLATION OF SHELF ANGLE

FORM TO BE CUT OUT



	HEIGHT OF SUPPORTED BRICK ABOVE ANGLE	
	10'-0" (3050mm)	20'-0" (6100mm)
ANGLE SIZE	L6" x 4" x 5/16" (L152 x 102 x 7.9)	L6" x 4" x 3/8" (L152 x 102 x 9.5)
ANCHOR SIZE */ EMBEDMENT	HSL M12/25 3.2" (80mm)	HSL M16/25 4.2" (105mm)
ANCHOR SPACING	16" (406mm)	16" (406mm)

\* ANCHORS SPECIFIED ABOVE ARE HILTI HEAVY DUTY ANCHORS

**NOTES:**

- 1 CONTRACTOR TO INSTALL ANCHORS AS PER SUPPLIER'S SPECIFICATIONS.
- 2 ASSUMES BRICK INSTALLATION IN ACCORDANCE WITH APPLICABLE CODES.
- 3 MIN. STEEL Fy=43.5 ksi (300 MPa) YIELD STRENGTH FOR ANGLES
- 4 ANGLES AND BOLTS TO BE GALVANIZED OR STAINLESS STEEL TO MEET THE REQUIREMENT OF TABLE 5.1 OF A370-04 (CONNECTIONS FOR MASONRY, OR EQUIVALENT STANDARD)

**DISCLAIMER NOTICE:**  
SPECIFIC INFORMATION REQUIRED FOR COMPLIANCE WITH LOCAL CODES IS THE RESPONSIBILITY OF THE DESIGNER

A6B04



BRICK SHELF ANGLE  
BACK OF ANGLE FLUSH  
WITH CONCRETE  
(POST INSTALLATION MOUNT)

REV. NO. 002 TV	DWG NO. C-11
REV. DATE: JAN 2006	
DRAWN BY J.N / N.L	SCALE: 1 1/2"=1'-0"