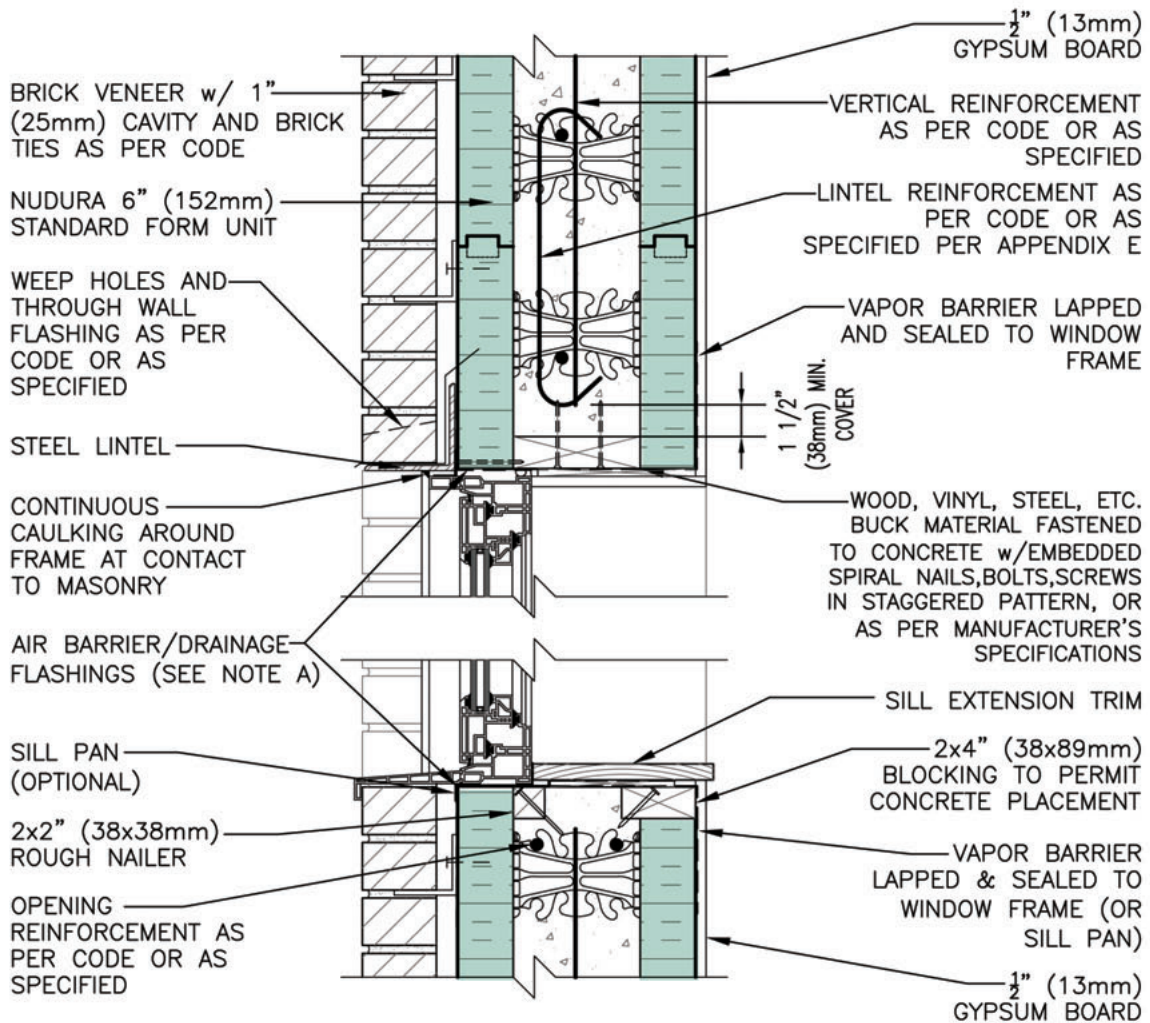


TYPICAL DETAILS C-22



NOTE A: AIR BARRIER/DRAINAGE FLASHINGS TO BE INSTALLED AROUND COMPLETE OPENING PERIMETER AS PER SECTION 9.1 OF THE NUDURA INSTALLATION MANUAL OR AS DETAILED BY LOCAL APPLICABLE CODES (CODE GOVERNS)

DISCLAIMER NOTICE:
SPECIFIC INFORMATION REQUIRED FOR COMPLIANCE WITH LOCAL CODES IS THE RESPONSIBILITY OF THE DESIGNER



STANDARD 6" FORM UNIT WINDOW HEAD/SILL DETAIL BRICK VENEER FINISH

REV. NO. 000	DWG NO. C-22
DATE DEC 2009	
DRAWN BY: K. STILL	SCALE: 1 1/2"=1'-0"