

THE BENEFITS

INSTALLATION AND APPLICATION

- Insulation for foundation walls
- Insulation for interior and exterior walls
- Test Results exceed ULC standards
- Easily installed reducing labour requirements compared with traditional finishing methods
- Embedded wood fastening strip on 16" centres

ENVIRONMENTALLY FRIENDLY

- 100% recyclable and produced from recycled materials
- Does not contain any CFCs or HCFCs
- Water and humidity resistant
- Contributes to the LEED Program

GREATER VALUE

- Better quality/price ratio
- Saves energy by eliminating thermal bridging
- Reduced heating bills
- 3 installation steps in 1
- Permanent insulating value of up to R-14



To learn more about NUDURA Insulation Technology visit Nudura.com



Authorized Distributor



www.nudura.com 866-468-6299

easy installation.
superior performance.

NUDURA® has no control over the installation or workmanship used in the assembly or the installation of the Nudura products, therefore, NUDURA® shall not be liable for any general, special, direct, indirect or consequential damages, including bodily harm that may be suffered by any person including, without limitation, the installer, contractor, architect, engineer, homeowner or customer due to the use, assembly or installation of NUDURA®. Information and suggestions contained in this brochure are offered for information purposes only and to the best of our knowledge can be considered reliable. All suggested applications must first be evaluated with regard to the specific circumstances, and in light thereof, may need to be adapted or modified if necessary to take account of local conditions and materials used. This brochure cannot in any case be considered an Undertaking or Guarantee whether concerning either the information data or suggestions included. Be sure to consult relevant building codes to ensure all applicable regulations are observed.



NUDURA Insulation Technology can be directly applied on foundation or exterior walls allowing you to easily insulate basements or exterior walls in one easy step. With the standard 4 ft x 8 Ft dimension, installation is fast and easy for anyone to install, saving time and money compared to multi-step finishing processes that are far more labour intensive. With NUDURA Insulation Technology simply attach the insulation board to foundation walls with an easy to use ship lap system, run your electrical and then drywall. Drywall can then be easily attached directly to the embedded 2 1/2" fastening strip positioned on 16" centres.

NUDURA Insulation Technology is made of EPS or Expanded Polystyrene, making it easy to cut and install.

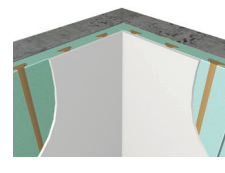
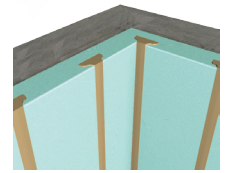


Product Highlights

- Available in sizes of 4ft x 8ft and in thicknesses of 2 1/2" and 3 1/2".
- NUDURA Insulation Technology provides R-Value Ratings of up to R-14.
- Three installation steps in one, reducing labour requirements making installation easy for contractors and home owners.
- Provides increased home comfort.
- Saves energy by eliminating thermal bridging.
- NUDURA Insulation Technology is environmentally friendly and does not contain any CFCs or HCFCs.

Easy Installation

- 1 Install NUDURA Insulation Technology**
Easily attach NUDURA Insulation Technology using mechanical fasteners (screws) and a EPS friendly adhesive. Panels easily fit together with the ship lap system creating a solid thermal barrier.
- 2 Install Electrical Wiring**
Electrical wires are easily inserted into NUDURA Insulation Technology using a thin bladed knife, eliminating labor intensive wire installation found in traditional finishing methods.
- 3 Install Drywall**
Install Drywall using the patented NUDURA Insulation Technology fastening strip. Fastening is provided every 16" on centre



easy installation. superior performance

For complete installation instructions refer to the NUDURA Insulation Technology Installation Guide