

**BXUVC.W012
Fire Resistance Ratings**

Page Bottom

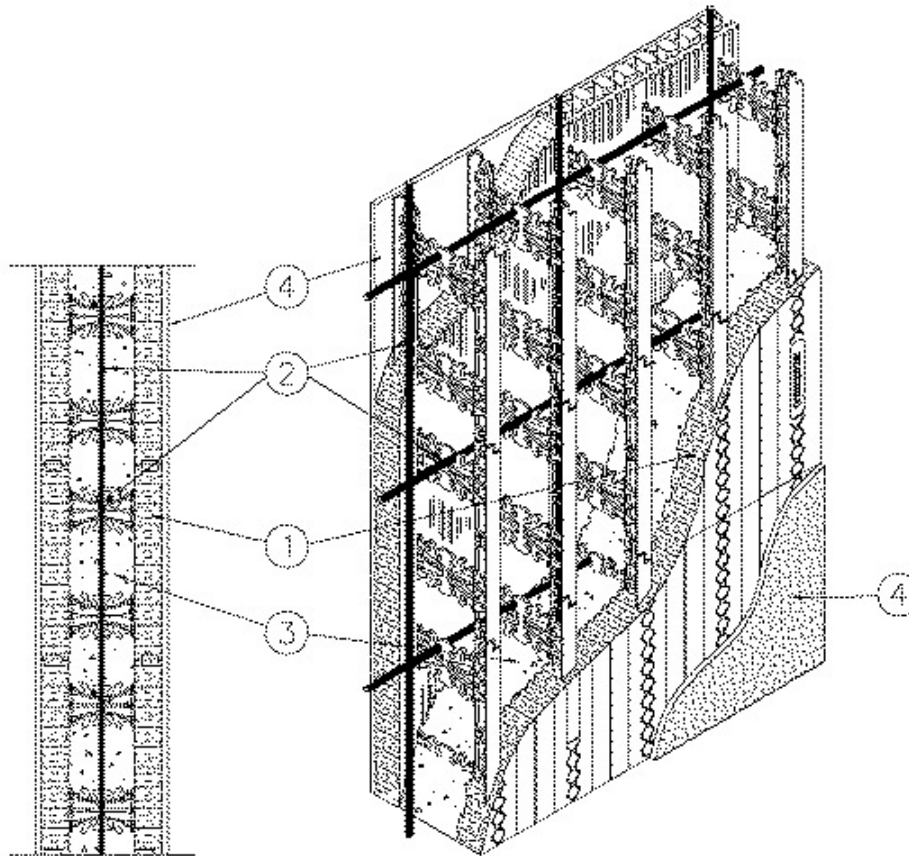
Fire Resistance Ratings

See General Information for Fire Resistance Ratings

Design No. W012

July 23, 2008

Assembly Rating - 2 or 4 h (See item 1)



Bearing Wall

- 1. **Insulated Concrete Forms** — CDEL (Guide No. 40 U18.45). Standard form units comprised of two 2440 by 457 mm by 67 mm thick expanded polystyrene (EPS) panels linked by polypropylene webs at 200 mm OC. The minimum width of the ICF cavity is 102 mm as shown in the table below. Height adjusters consist of 813 mm long, 76 mm high and 67 mm thick flat EPS panels. End caps vary with wall thickness from 102 mm to 305 mm wide, 457 mm high and 60 mm thick flat EPS panels. Assembly ratings depend on width of ICF cavity as shown in table below:

Assembly Rating, h	Min. ICF Cavity Thickness, mm
2	102
4	152

NUDURA CORP

2. **Reinforcing Steel** — 10M reinforcing bars inserted horizontally into each ICF course within polypropylene web notches. Reinforcing bars placed vertically at 400 mm OC into centre of ICFs.

3. **Sand-Limestone Concrete** — 2300 ± 50 kg/m³ density, 20 MPa nominal compressive strength.

4. **Gypsum Wallboard** — 12.7 mm thick, 6.6 kg/m², 1220 mm wide gypsum wallboard fastened to flanges of polypropylene webs with 50 mm long drywall screws at 425 mm OC vertically and 200 mm OC horizontally. Joints covered with joint compound, covered with joint tape, and covered with an additional coat of joint compound. Screwheads covered with joint compound. When the Insulated Concrete Wall is used as an exterior wall, the Fire Resistance Rating is applicable from the inside only. The gypsum wallboard on the exterior face of the exterior wall may be omitted provided the EPS insulation is protected in accordance with building code requirements.

Last Updated on 2008-07-23

[Questions?](#)

[Notice of Disclaimer](#)

[Page Top](#)

Copyright © 2009 Underwriters' Laboratories of Canada®

The appearance of a company's name or product in this database does not in itself assure that products so identified have been manufactured under ULC's Follow-Up Service. Only those products bearing the ULC Mark should be considered to be Listed and covered under ULC's Follow-Up Service. Always look for the Mark on the product.

ULC permits the reproduction of the material contained in the Online Certifications Directory subject to the following conditions: 1. The Guide Information, Designs and/or Listings (files) must be presented in their entirety and in a non-misleading manner, without any manipulation of the data (or drawings). 2. The statement "Reprinted from the Online Certifications Directory with permission from Underwriters Laboratories of Canada" must appear adjacent to the extracted material. In addition, the reprinted material must include a copyright notice in the following format: "Copyright © 2009 Underwriters Laboratories of Canada®"

An independent organization working for a safer world with integrity, precision and knowledge.

