

OPENING REINFORCEMENT
AS PER CODE OR AS
SPECIFIED

NUDURA 12" (305mm)
STANDARD FORM UNIT

1/2" (13mm)
GYPSUM BOARD

HORIZ/VERT
REINFORCEMENT AS
PER CODE OR AS
SPECIFIED

DIRECT APPLIED
ACRYLIC FINISH

FASTEN STUCCO MESH TO
BUCK PRIOR TO PLACING
BUCK AT JAMB CONDITION

DECORATIVE EPS FOAM TRIM
APPLIED TO NUDURA FORM
USING ADHESIVE

WOOD,VINYL,STEEL,ETC. BUCK MATERIAL
FASTENED TO CONCRETE w/EMBEDDED
SPIRAL NAILS,BOLTS,SCREWS IN
STAGGERED PATTERN, OR AS PER
MANUFACTURERS SPECIFICATION

GYPSUM BOARD
RETURN TO FRAME

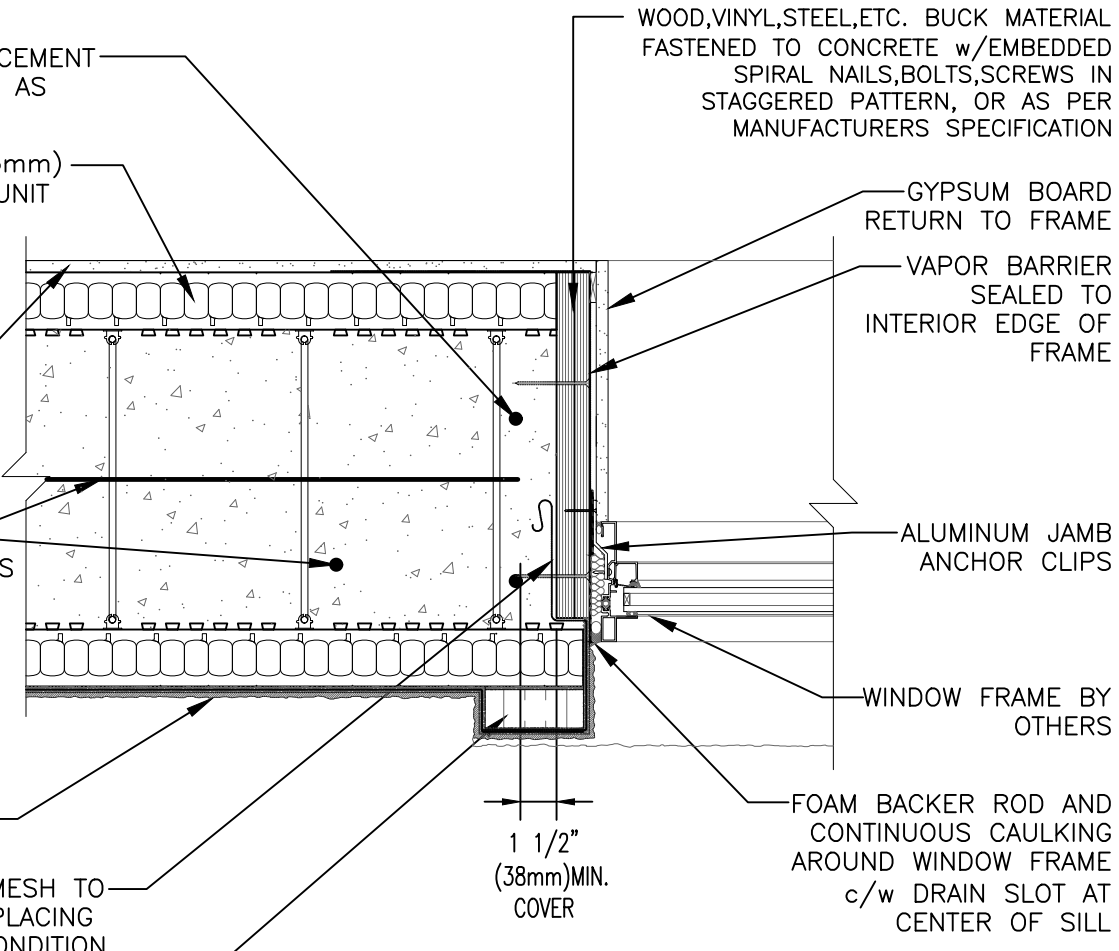
VAPOR BARRIER
SEALED TO
INTERIOR EDGE OF
FRAME

ALUMINUM JAMB
ANCHOR CLIPS

WINDOW FRAME BY
OTHERS

FOAM BACKER ROD AND
CONTINUOUS CAULKING
AROUND WINDOW FRAME
c/w DRAIN SLOT AT
CENTER OF SILL

1 1/2"
(38mm) MIN.
COVER



The architecture, engineering, and design of the project using the Nudura products are the responsibility of the project's design professional. All products and systems must comply with local building codes and standards. This detail is for general information and guidance only and Nudura specifically disclaims any liability for the use of this detail. The project design professional determines, in its sole discretion, whether this detail or a functionally equivalent detail is best suited for the project. This detail is subject to change without notice. Contact Nudura to ensure you have the most recent version.

Non-Combustible Construction

Detail: Nudura 12" (305mm) Form Unit, Window Jamb Detail,
Aluminum Framed Window, Buck Mounted, Exterior Finish as Specified

File Name:

Drawn by: TVC

Scale: 1 : 8

Date: 12/29/2021

E12D02



Nudura Technical Support: 866-468-6299
International: +1 705-726-9499

tremcocpg.com



Construction Products Group