

ONE SERIES

The One Series combines traditional forming methods and Insulated Concrete Form technology together.

Product Overview

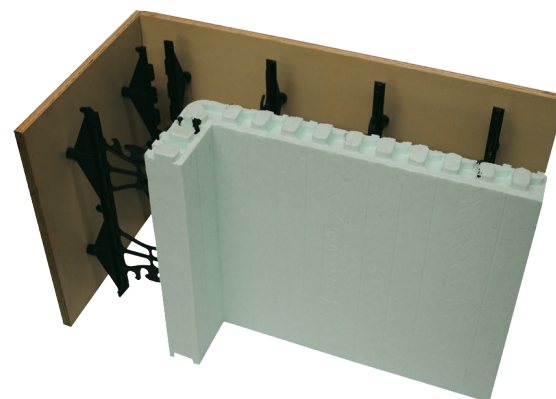
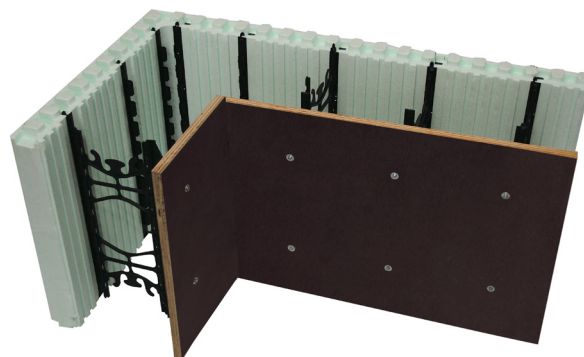
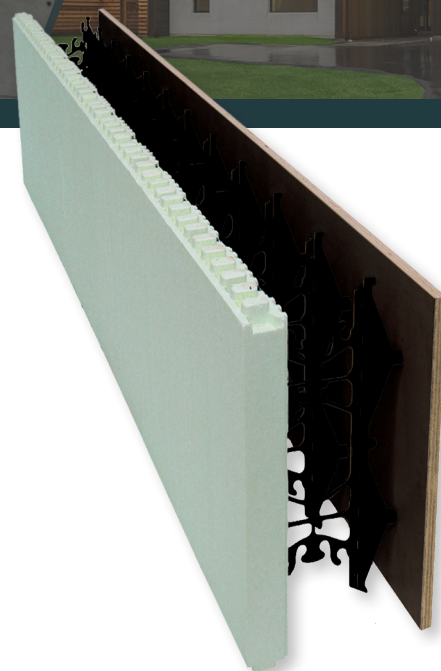
Nudura® One Series helps reduce labor by eliminating the need to strip foam in areas like elevator shafts, stairwells, and other spaces requiring a non-combustible finish. It provides architects more design flexibility for multi-story buildings, schools, and commercial warehouses. For home builders, it's perfect for pools and areas requiring foam on just one side.

The transition between concrete and foam is seamless, as the unique design allows concrete to meet the edge of a Nudura foam panel. The DURA MULTI-LINK® tie uses attachment points designed to prevent visible webs on the concrete side. With only two small, easily covered connection points per web, the result is a smooth interior or exterior concrete surface.

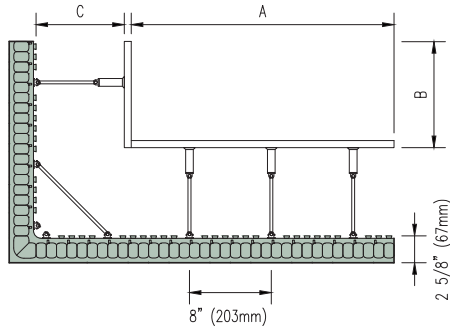
Features & Benefits

- Industry's first multi-link form
- Reduced labor – no need to strip foam
- Design versatility
- Features Nudura's Innovative Technologies
- Concrete Core Widths from 6-5/8 in (168 mm) to 14-5/8 in (371 mm)

The One Series features DURAMAX Technology®, the industry's largest standard form on the market, 8 ft (2.4 m) long by 18 in (457 mm) high placing 12 sq. ft. (1.11 m²) of wall area in one building step.

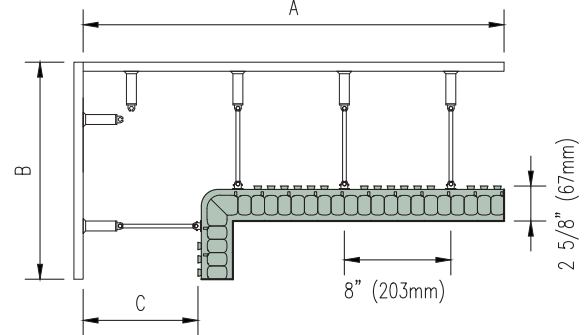


90° Corner EPS Panel Outside



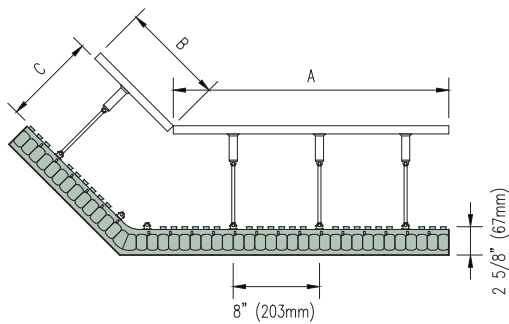
DIMENSIONS			
INSERT WEB DIMENSIONS	A	B	C
4" (102 mm)	2' - 3 5/8" (701 mm)	1' - 0 3/8" (314 mm)	6 5/8" (168 mm)
6" (152 mm)	2' - 1 5/8" (650 mm)	10 3/8" (263 mm)	8 5/8" (219 mm)
8" (203 mm)	1' - 11 5/8" (600 mm)	8 3/8" (212 mm)	10 5/8" (270 mm)
10" (254 mm)	1' - 9 5/8" (549 mm)	6 3/8" (161 mm)	12 5/8" (321 mm)

90° Corner EPS Panel Inside



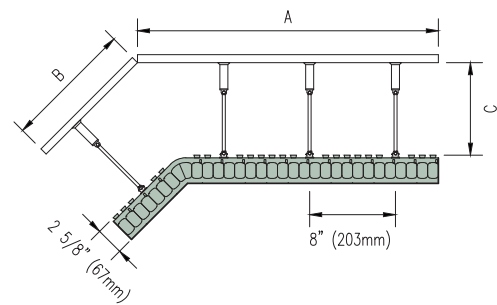
DIMENSIONS			
INSERT WEB DIMENSIONS	A	B	C
4" (102 mm)	2' - 5 5/8" (752 mm)	1' - 2 3/8" (366 mm)	6 5/8" (168 mm)
6" (152 mm)	2' - 7 5/8" (803 mm)	1' - 4 3/8" (416 mm)	8 5/8" (219 mm)
8" (203 mm)	2' - 9 5/8" (854 mm)	1' - 6 3/8" (467 mm)	10 5/8" (270 mm)
10" (254 mm)	2' - 11 5/8" (905 mm)	1' - 8 3/8" (518 mm)	12 5/8" (321 mm)
12" (305 mm)	3' - 1 5/8" (956 mm)	1' - 10 3/8" (569 mm)	14 5/8" (371 mm)

45° Corner EPS Panel Outside

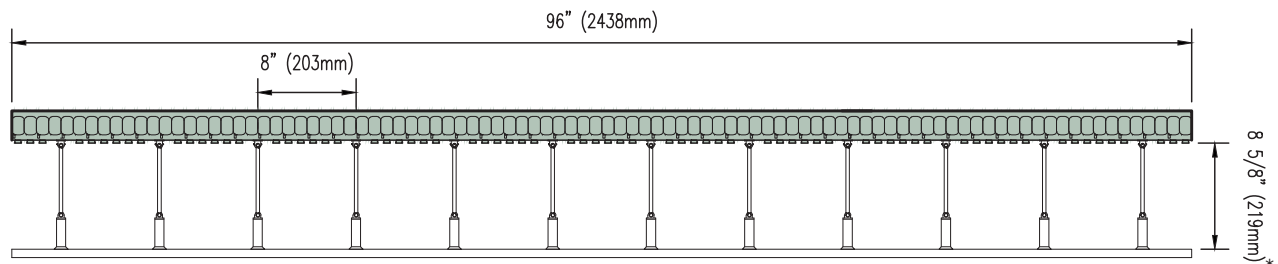


DIMENSIONS			
INSERT WEB DIMENSIONS	A	B	C
4" (102 mm)	2' - 2 3/8" (670 mm)	10 3/8" (264 mm)	6 5/8" (168 mm)
6" (152 mm)	2' - 1 1/2" (649 mm)	9 1/2" (243 mm)	8 5/8" (219 mm)
8" (203 mm)	2' - 0 3/4" (628 mm)	8 3/8" (222 mm)	10 5/8" (270 mm)
10" (254 mm)	1' - 11 7/8" (607 mm)	7 7/8" (201 mm)	12 5/8" (321 mm)
12" (305 mm)	1' - 11 1/8" (586 mm)	7 1/8" (180 mm)	14 5/8" (371 mm)

45° Corner EPS Panel Inside



DIMENSIONS			
INSERT WEB DIMENSIONS	A	B	C
4" (102 mm)	2' - 3 1/4" (691 mm)	11 1/4" (285 mm)	6 5/8" (168 mm)
6" (152 mm)	2' - 4" (712 mm)	12" (300 mm)	8 5/8" (219 mm)
8" (203 mm)	2' - 4 7/8" (733 mm)	1' - 0 7/8" (327 mm)	10 5/8" (270 mm)
10" (254 mm)	2' - 5 3/4" (754 mm)	1' - 1 3/4" (348 mm)	12 5/8" (321 mm)
12" (305 mm)	2' - 6 1/2" (775 mm)	1' - 3 1/2" (369 mm)	14 5/8" (371 mm)



*Dimension varies with insert web width