

DRYVIT STUCCO FINISH

NUDURA ICF OR  
APPROVED EQUIVALENT

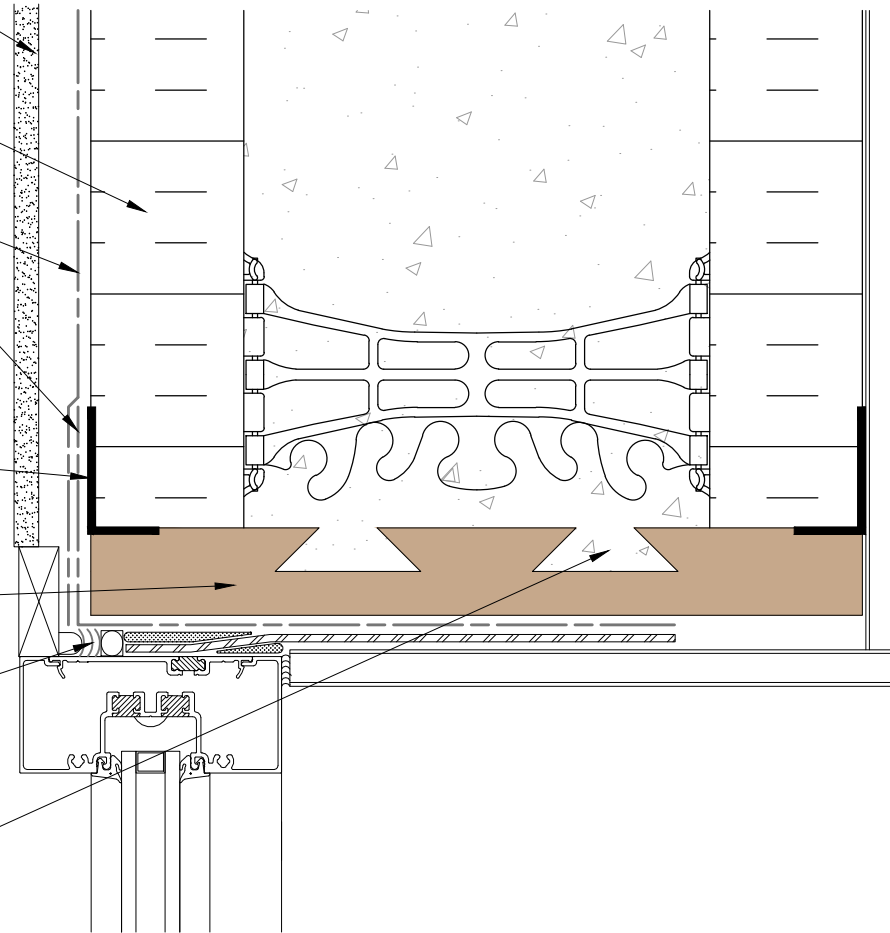
TREMCO/DRYVIT AIR-WATER RESISTIVE  
BARRIER COATING, IF SPECIFIED  
(REFER TO PRODUCT DATA SHEETS  
FOR SPECIFIC APPLICATION METHODS)

PREBUCK METAL FLANGE

ENGINEERED FRAMING SYSTEM  
BY PREBUCK LLC

TREMCO OR DRYVIT  
APPROVED SEALANT

PREBUCK DOVETAIL  
CONCRETE KEYWAYS



*The architecture, engineering, and design of the project using the Prebuck products are the responsibility of the project's design professional. All products and systems must comply with local building codes and standards. This detail is for general information and guidance only and Prebuck specifically disclaims any liability for the use of this detail. The project design professional determines, in its sole discretion, whether this detail or a functionally equivalent detail is best suited for the project. This detail is subject to change without notice. Contact Prebuck to ensure you have the most recent version.*

### Windows



Prebuck Technical Support: 616-309-6256

Detail: Window Jamb, ICF Wall, Stucco

Drawn by: HDE

Checked by: BC

Scale: NTS

Date: 2/15/2022

File Name:

PB-WJ-ICF-S



Construction Products Group

[www.tremcocpg.com](http://www.tremcocpg.com)