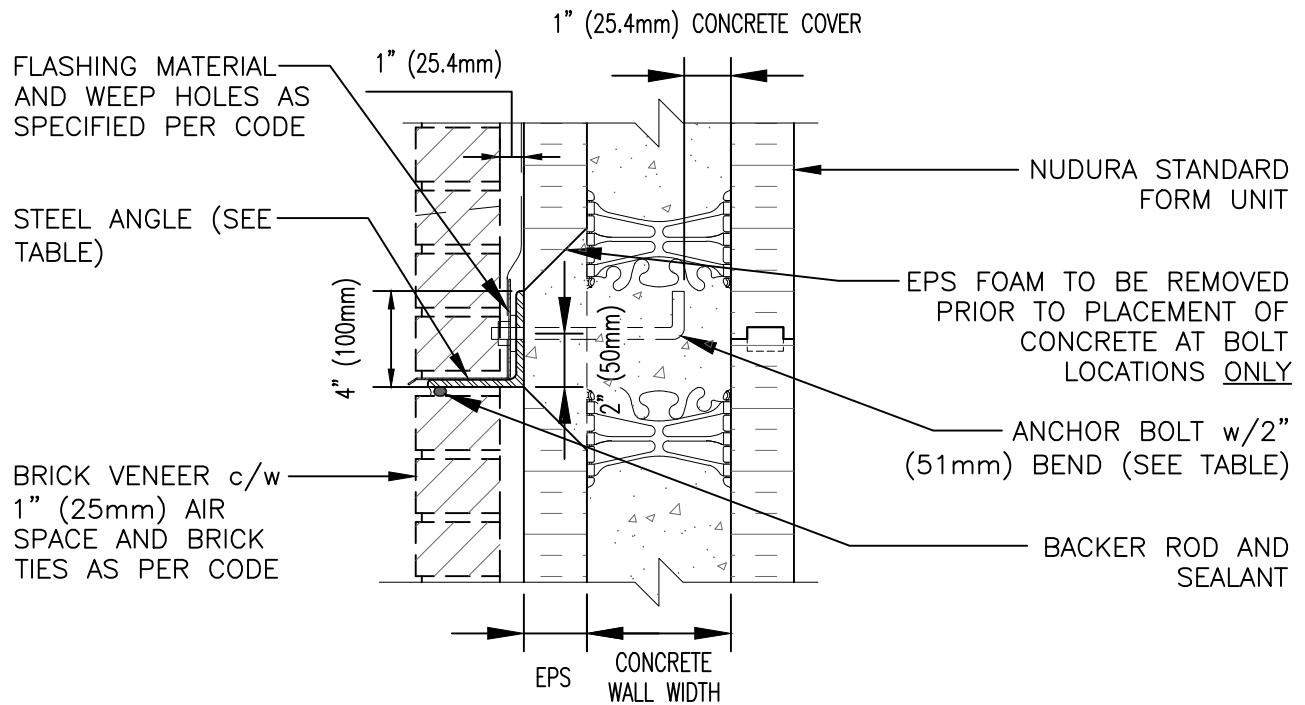


**DISCLAIMER NOTICE:**  
 SPECIFIC INFORMATION  
 REQUIRED FOR COMPLIANCE  
 WITH LOCAL CODES IS THE  
 RESPONSIBILITY OF THE  
 DESIGNER





ANGLE SIZE	HEIGHT OF SUPPORTED BRICK ABOVE ANGLE	
	10'-0" (3050mm)	20'-0" (6100mm)
ANGLE SIZE	L4" x 4" x 1/4" (L102mm x 102mm x 6.35mm)	L4" x 4" x 1/4" (L102mm x 102mm x 6.35mm)
ANCHOR SIZE	1/2" DIAMETER (12.5mm DIAMETER)	1/2" DIAMETER (12.5mm DIAMETER)
ANCHOR SPACING	24" (610mm)	16" (406mm)

**NOTES:**

- 1 ASSUMES BRICK INSTALLATION IN ACCORDANCE WITH APPLICABLE CODES.
- 2 MINIMUM STEEL  $F_y=43.5$  ksi (300 MPa) YIELD STRENGTH FOR ANGLES.
- 3 ANGLES AND BOLTS TO BE GALVANIZED OR STAINLESS STEEL TO MEET THE REQUIREMENT OF TABLE 5.1 OF CSA A370-04 (CAN) OR ASTM E754 (USA) (CONNECTIONS FOR MASONRY ANCHORS AND TIES).

The architecture, engineering, and design of the project using the Nudura products are the responsibility of the project's design professional. All products and systems must comply with local building codes and standards. This detail is for general information and guidance only and Nudura specifically disclaims any liability for the use of this detail. The project design professional determines, in its sole discretion, whether this detail or a functionally equivalent detail is best suited for the project. This detail is subject to change without notice. Contact Nudura to ensure you have the most recent version.

**Typical Details**

 Nudura Technical Support: 866-468-6299 International: +1 705-726-9499	Detail: Brick Shelf Angle Back of Angle Flush with EPS Exterior (Multi-Story Application) Pre-Installation Mount		File Name: C-10	 Construction Products Group
	Drawn by: J.N / N.L	Scale: NTS	Date: 10/29/2021	