

NUDURA STANDARD 8"
(203mm) FORM UNIT

BRICK VENEER c/w
1" (25mm) AIR SPACE
AND BRICK TIES

HORIZ/VERT
REINFORCEMENT AS PER
CODE OR AS SPECIFIED

THROUGH WALL
FLASHING AS PER
CODE OR AS
SPECIFIED

$\frac{3}{16}$ " (5mm) ACRYLIC
PRIME COAT

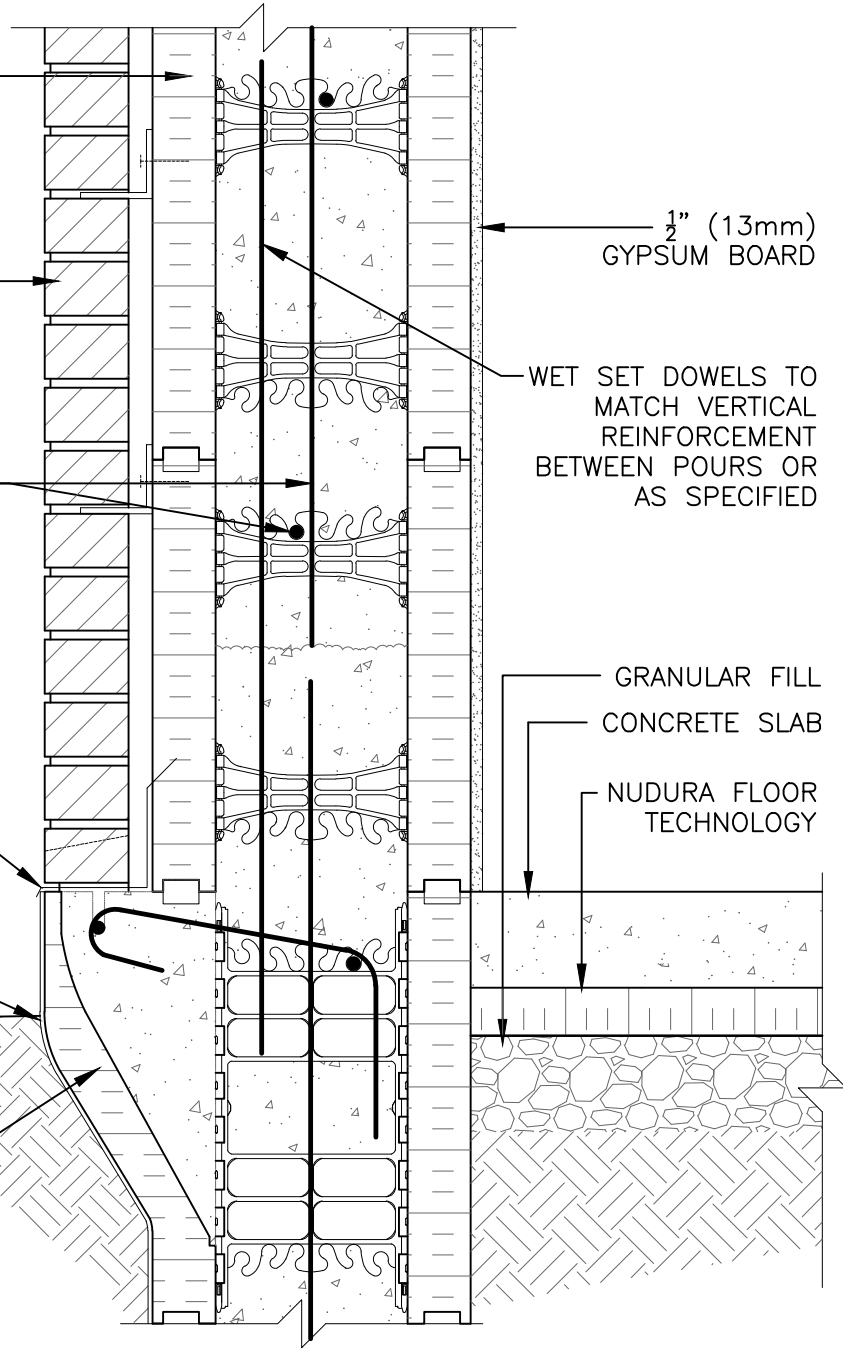
NUDURA 8" (203mm)
BRICK LEDGE FORM
UNIT

$\frac{1}{2}$ " (13mm)
GYPSUM BOARD

WET SET DOWELS TO
MATCH VERTICAL
REINFORCEMENT
BETWEEN POURS OR
AS SPECIFIED

GRANULAR FILL
CONCRETE SLAB

NUDURA FLOOR
TECHNOLOGY



The architecture, engineering, and design of the project using the Nudura products are the responsibility of the project's design professional. All products and systems must comply with local building codes and standards. This detail is for general information and guidance only and Nudura specifically disclaims any liability for the use of this detail. The project design professional determines, in its sole discretion, whether this detail or a functionally equivalent detail is best suited for the project. This detail is subject to change without notice. Contact Nudura to ensure you have the most recent version.

Non-Combustible Construction

Detail: Nudura 8" (203mm) Form Unit, Stem Wall at Slab on Grade,
Brick Veneer Finish, Insulated

File Name:

Drawn by: TVC

Scale: 1 : 8

Date: 1/10/2022

B8C11



Nudura Technical Support: 866-468-6299
International: +1 705-726-9499



Construction Products Group

tremcocpg.com