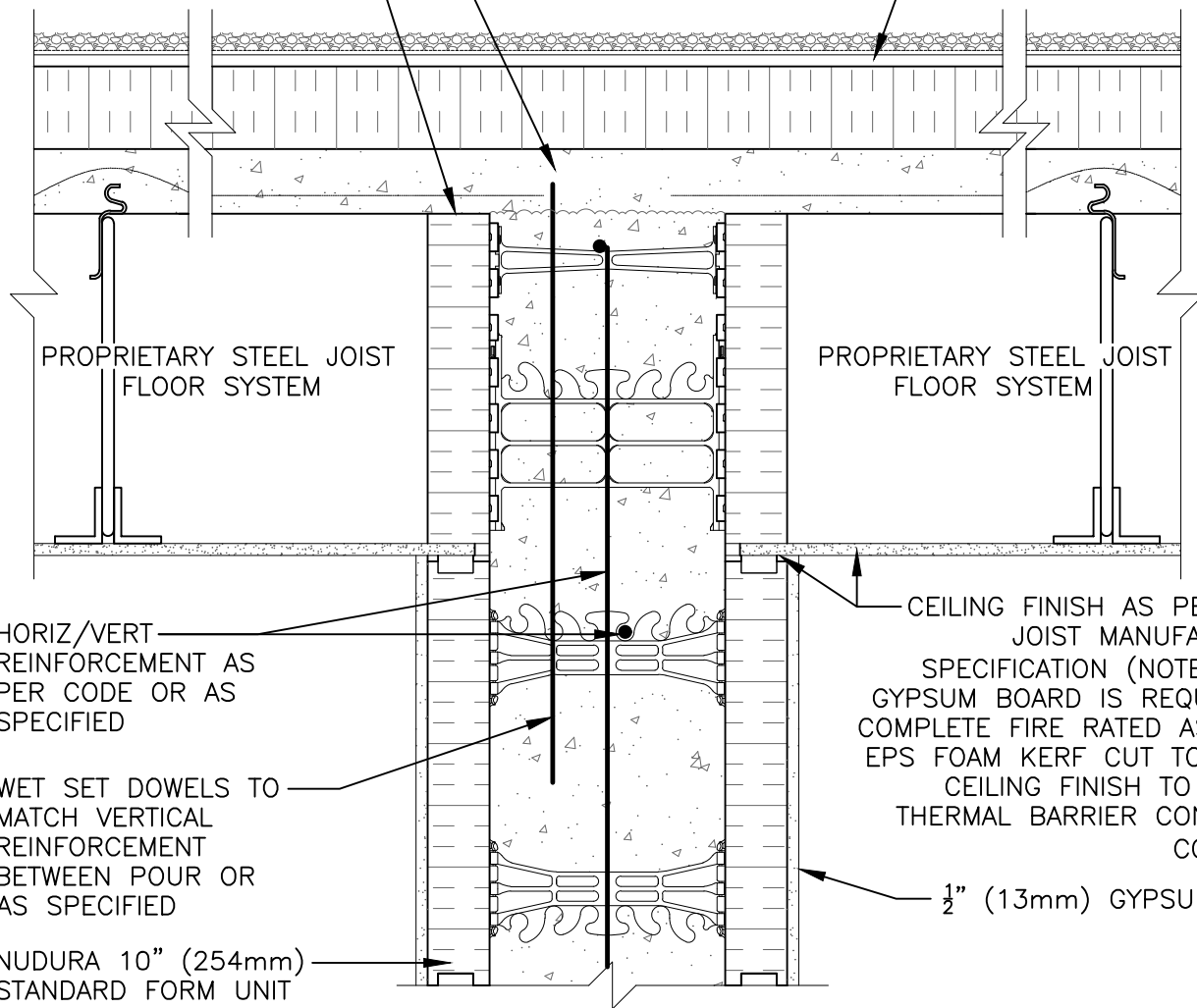


ALLOW ROOF SLAB  
TO REST ON TO  
BEARING WALL  
CONCRETE

FORM PANELS c/w  
INSERT WEBS— CUT TO  
SUIT ROOF  
CONNECTION—  
ADDITIONAL FORM  
SUPPORT AS REQUIRED

FIBER BOARD SUBSTRATE  
w/ ROOF MEMBRANE  
ON 3 1/2" (89mm) RIGID  
INSULATION



The architecture, engineering, and design of the project using the Nudura products are the responsibility of the project's design professional. All products and systems must comply with local building codes and standards. This detail is for general information and guidance only and Nudura specifically disclaims any liability for the use of this detail. The project design professional determines, in its sole discretion, whether this detail or a functionally equivalent detail is best suited for the project. This detail is subject to change without notice. Contact Nudura to ensure you have the most recent version.

### Non-Combustible Construction

Detail: Nudura 10" (254mm) Form Unit, Steel Joist Roof System,  
Non-Bearing Demising Wall

File Name:

Drawn by: KS

Scale: 1 : 8

Date: 12/10/2021

G10B04



Nudura Technical Support: 866-468-6299  
International: +1 705-726-9499



Construction Products Group

tremcocpg.com