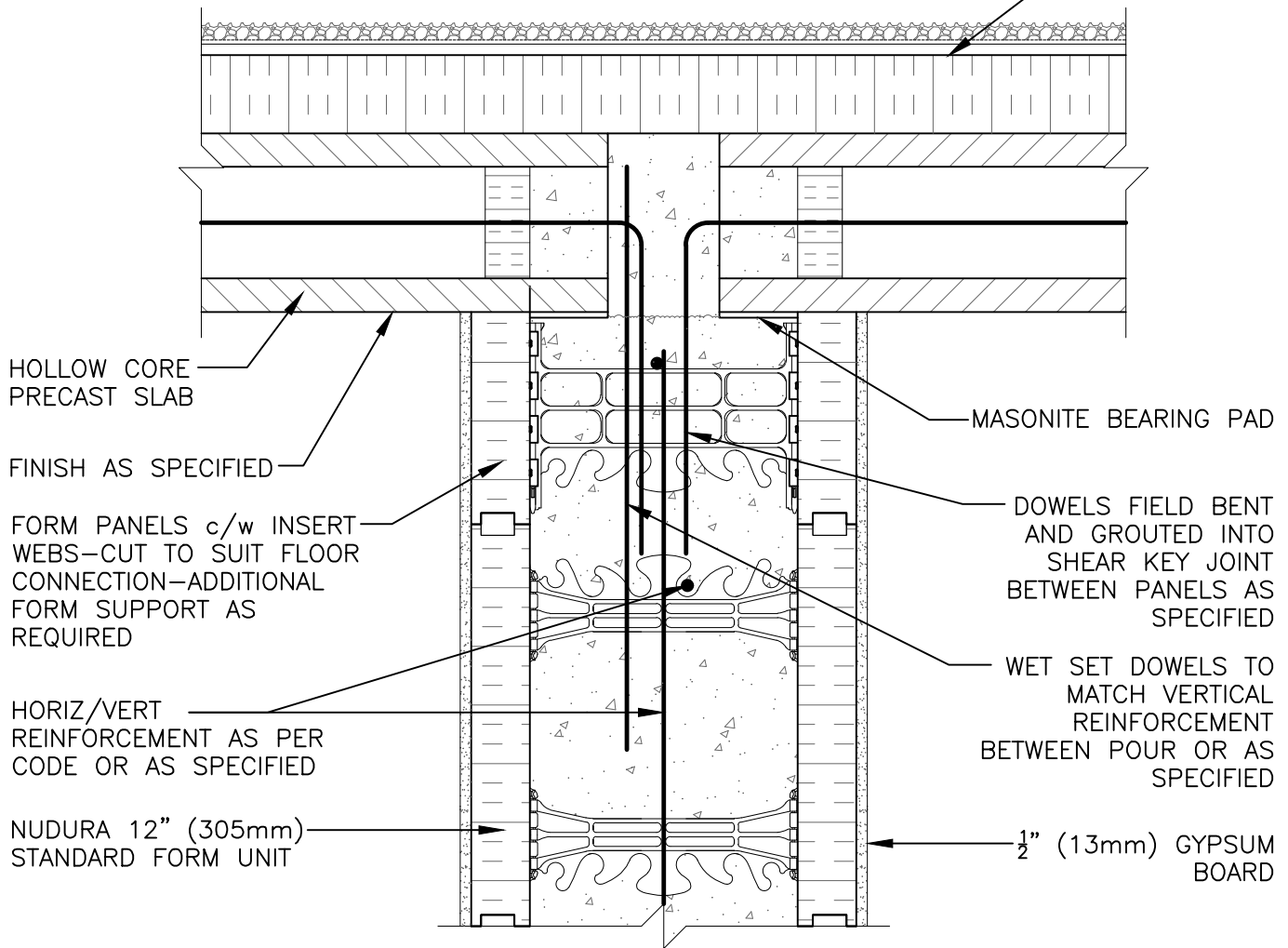


FIBER BOARD SUBSTRATE
w/ ROOF MEMBRANE
ON 3 1/2" (89mm) RIGID
INSULATION



HOLLOW CORE
PRECAST SLAB

FINISH AS SPECIFIED

FORM PANELS c/w INSERT
WEBS—CUT TO SUIT FLOOR
CONNECTION—ADDITIONAL
FORM SUPPORT AS
REQUIRED

HORIZ/VERT
REINFORCEMENT AS PER
CODE OR AS SPECIFIED

NUDURA 12" (305mm)
STANDARD FORM UNIT

MASONITE BEARING PAD

DOWELS FIELD BENT
AND GROUTED INTO
SHEAR KEY JOINT
BETWEEN PANELS AS
SPECIFIED

WET SET DOWELS TO
MATCH VERTICAL
REINFORCEMENT
BETWEEN POUR OR AS
SPECIFIED

1/2" (13mm) GYPSUM
BOARD

The architecture, engineering, and design of the project using the Nudura products are the responsibility of the project's design professional. All products and systems must comply with local building codes and standards. This detail is for general information and guidance only and Nudura specifically disclaims any liability for the use of this detail. The project design professional determines, in its sole discretion, whether this detail or a functionally equivalent detail is best suited for the project. This detail is subject to change without notice. Contact Nudura to ensure you have the most recent version.

Non-Combustible Construction

Detail: Nudura 12" (305mm) Form Unit, Hollow Core Precast Roof, Bearing Demising Wall		File Name:
Drawn by: KS	Scale: 1 : 8	G12A03
		Date: 5/17/2022
<small>tremcocpg.com</small>		

