

WINDOW FRAMING
BY OTHERS

FOAM BACKER ROD
AND CONTINUOUS
CAULKING AROUND
FRAME

MASONRY OR
BRICK SILL
COURSE

OPENING
REINFORCEMENT AS
PER CODE OR AS
SPECIFIED

NUDURA 6"
(152mm)
STANDARD FORM
UNIT

BRICK VENEER
c/w 1" (25mm)
AIR SPACE AND
BRICK TIES

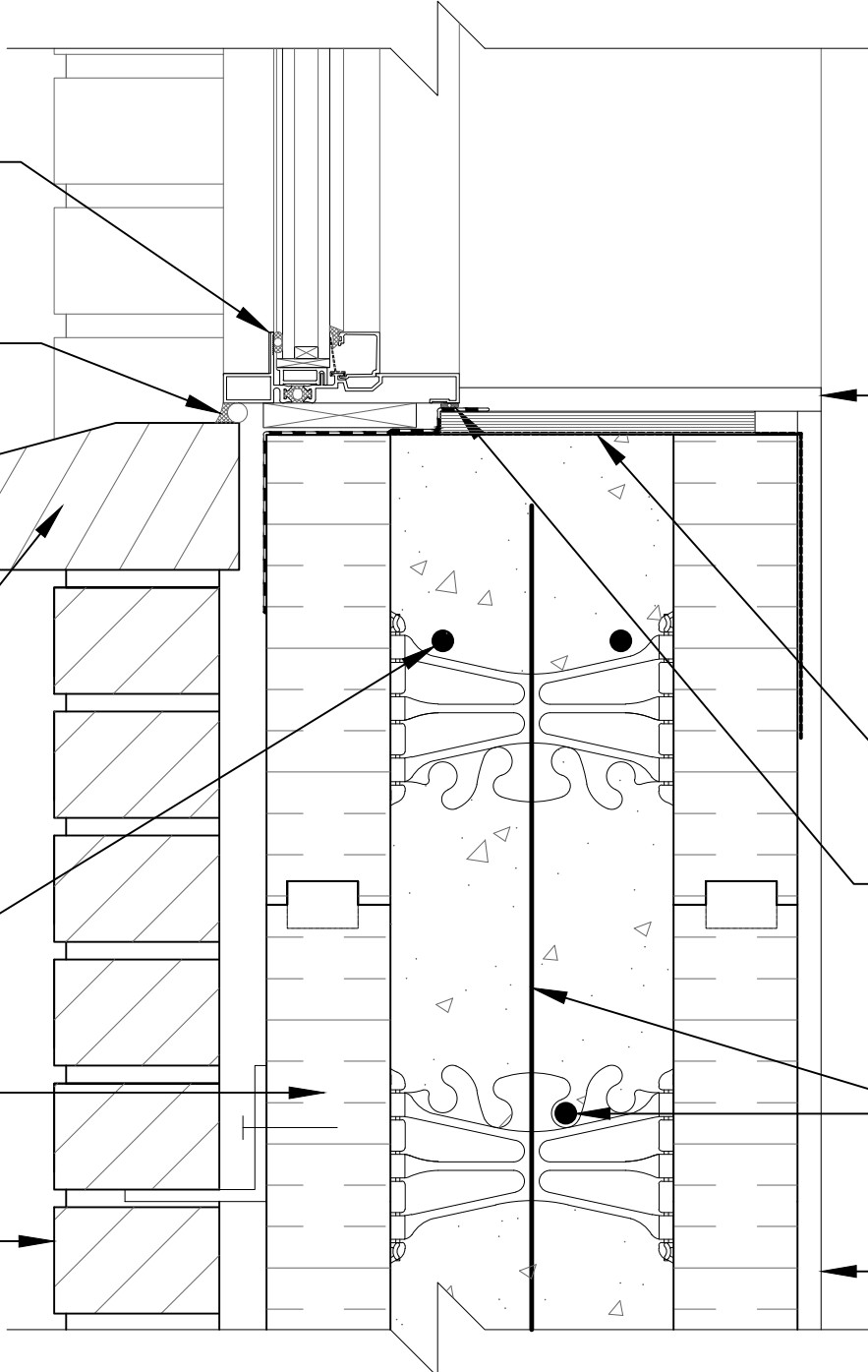
GYPSUM BOARD
RETURN TO
FRAME

VAPOR BARRIER
SEALED TO FRAME
AT SILL CONDITION

COMPRESSIBLE AIR
SEAL GASKET
APPLIED TO FULL
LENGTH REAR
EDGE OF SILL
PRIOR TO FRAME
INSTALLATION

HORIZ/VERT
REINFORCEMENT
AS PER CODE OR
AS SPECIFIED

1/2" (13mm)
GYPSUM BOARD



The architecture, engineering, and design of the project using the Nudura products are the responsibility of the project's design professional. All products and systems must comply with local building codes and standards. This detail is for general information and guidance only and Nudura specifically disclaims any liability for the use of this detail. The project design professional determines, in its sole discretion, whether this detail or a functionally equivalent detail is best suited for the project. This detail is subject to change without notice. Contact Nudura to ensure you have the most recent version.

Non-Combustible Construction

Nudura
Nudura Technical Support: 866-468-6299
International: +1 705-726-9499

Detail: Nudura 6" (152mm) Form Unit, Window Sill Detail, Aluminum Framed Window, Concrete Mounted, Brick Veneer Finish		File Name:
Drawn by: KS	Scale: 1 : 4	H6A05
		Date: 12/28/2021

TREMCO
Construction Products Group