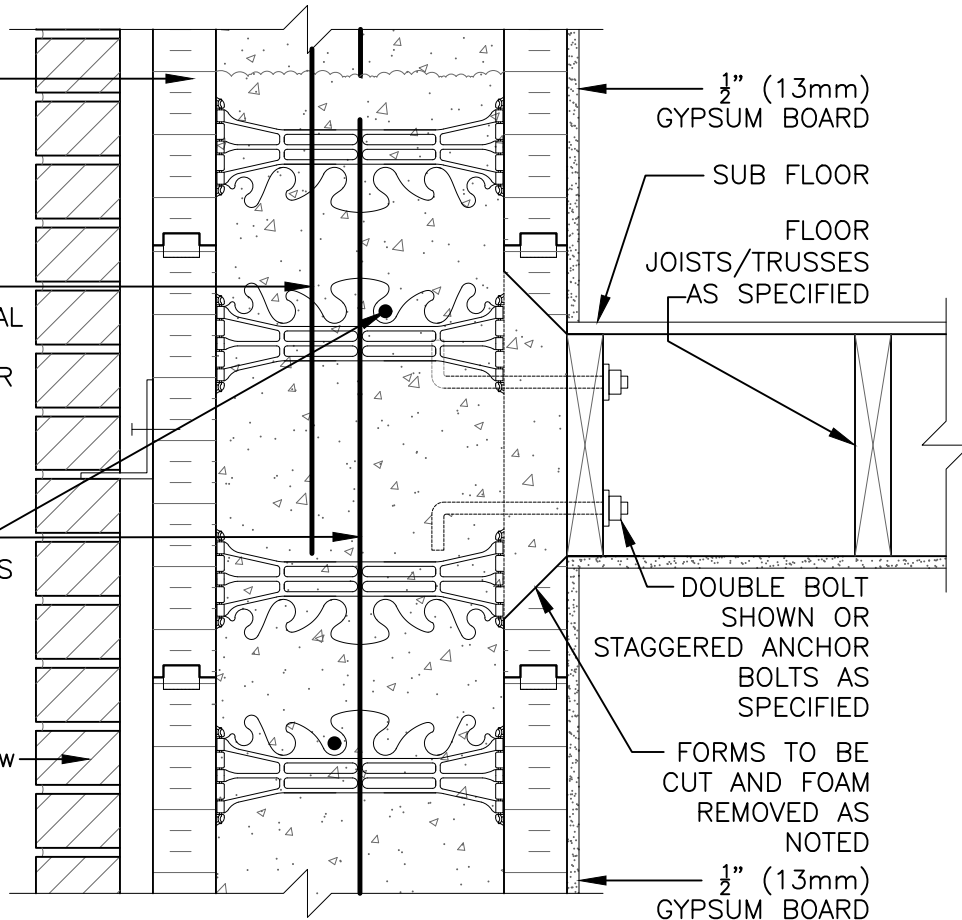


NUDURA 12"
(305mm)
STANDARD FORM
UNIT

WET SET DOWELS
TO MATCH VERTICAL
REINFORCEMENT
BETWEEN POUR OR
AS SPECIFIED

HORIZ/VERT
REINFORCEMENT AS
PER CODE OR AS
SPECIFIED

BRICK VENEER c/w
1" (25mm) AIR
SPACE AND BRICK
TIES



4 1/2" [114mm]

2 1/2" (64mm) MIN.

2" (51mm) MIN.

EQUAL TO RIM JOIST MINIMUM 7 1/2" (191mm)

1/2" (13mm)
GYPSUM BOARD

SUB FLOOR
FLOOR
JOISTS/TRUSSES
AS SPECIFIED

DOUBLE BOLT
SHOWN OR
STAGGERED ANCHOR
BOLTS AS
SPECIFIED

FORMS TO BE
CUT AND FOAM
REMOVED AS
NOTED

1/2" (13mm)
GYPSUM BOARD

The architecture, engineering, and design of the project using the Nudura products are the responsibility of the project's design professional. All products and systems must comply with local building codes and standards. This detail is for general information and guidance only and Nudura specifically disclaims any liability for the use of this detail. The project design professional determines, in its sole discretion, whether this detail or a functionally equivalent detail is best suited for the project. This detail is subject to change without notice. Contact Nudura to ensure you have the most recent version.

Combustible Construction

Detail: Nudura 12" (305mm) Form Unit, Floor Joist Connection,
Multi-Purpose Hanger, Joists Parallel to Wall

File Name:

Drawn by: TVC

Scale: 1 : 8

Date: 5/16/2022

C12A15



Nudura Technical Support: 866-468-6299
International: +1 705-726-9499



Construction Products Group

tremcoapg.com