

NUDURA 6" (152mm)  
STANDARD FORM UNIT

1/2" (13mm) GYPSUM  
BOARD

HORIZ/VERT  
REINFORCEMENT AS PER  
CODE OR AS SPECIFIED

HOOK REINFORCEMENT  
AS PER CODE OR AS  
SPECIFIED

NUDURA  
WATERPROOF MEMBRANE

NUDURA FLOOR  
TECHNOLOGY

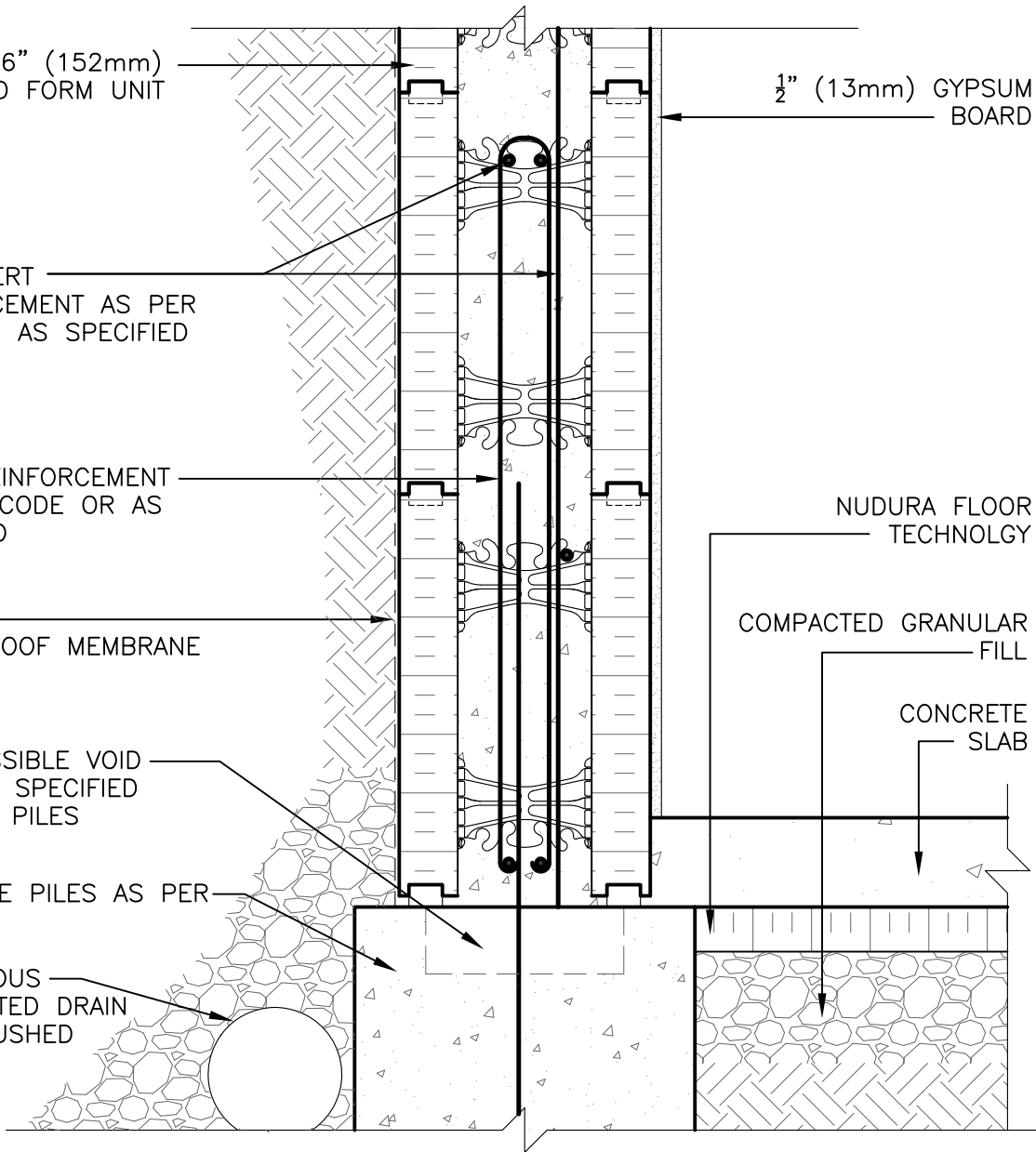
COMPACTED GRANULAR  
FILL

COMPRESSIBLE VOID  
FORM AS SPECIFIED  
BETWEEN PILES

CONCRETE  
SLAB

CONCRETE PILES AS PER  
CODE

CONTINUOUS  
PERFORATED DRAIN  
WITH CRUSHED  
STONE



**DISCLAIMER NOTICE:**  
SPECIFIC INFORMATION  
REQUIRED FOR COMPLIANCE  
WITH LOCAL CODES IS THE  
RESPONSIBILITY OF THE  
DESIGNER



**NUDURA**

INTEGRATED BUILDING TECHNOLOGY

*Building Value.*

NUDURA 6" (152mm) FORM UNIT  
STEM WALL ON PILES  
WITH INSULATED CONCRETE SLAB  
BELOW GRADE

REV. NO.  
003 KS  
REV. DATE:  
FEB 2010  
DRAWN BY:  
T. VAN CLIEAF

DWG NO.  
B6C09  
SCALE:  
1 : 8