

NUDURA 10" (254mm)
STANDARD FORM UNIT

1/2" (13mm) GYPSUM
BOARD

HORIZ/VERT
REINFORCEMENT AS PER
CODE OR AS SPECIFIED

HOOK REINFORCEMENT
AS PER CODE OR AS
SPECIFIED

NUDURA
WATERPROOF MEMBRANE

NUDURA FLOOR
TECHNOLOGY

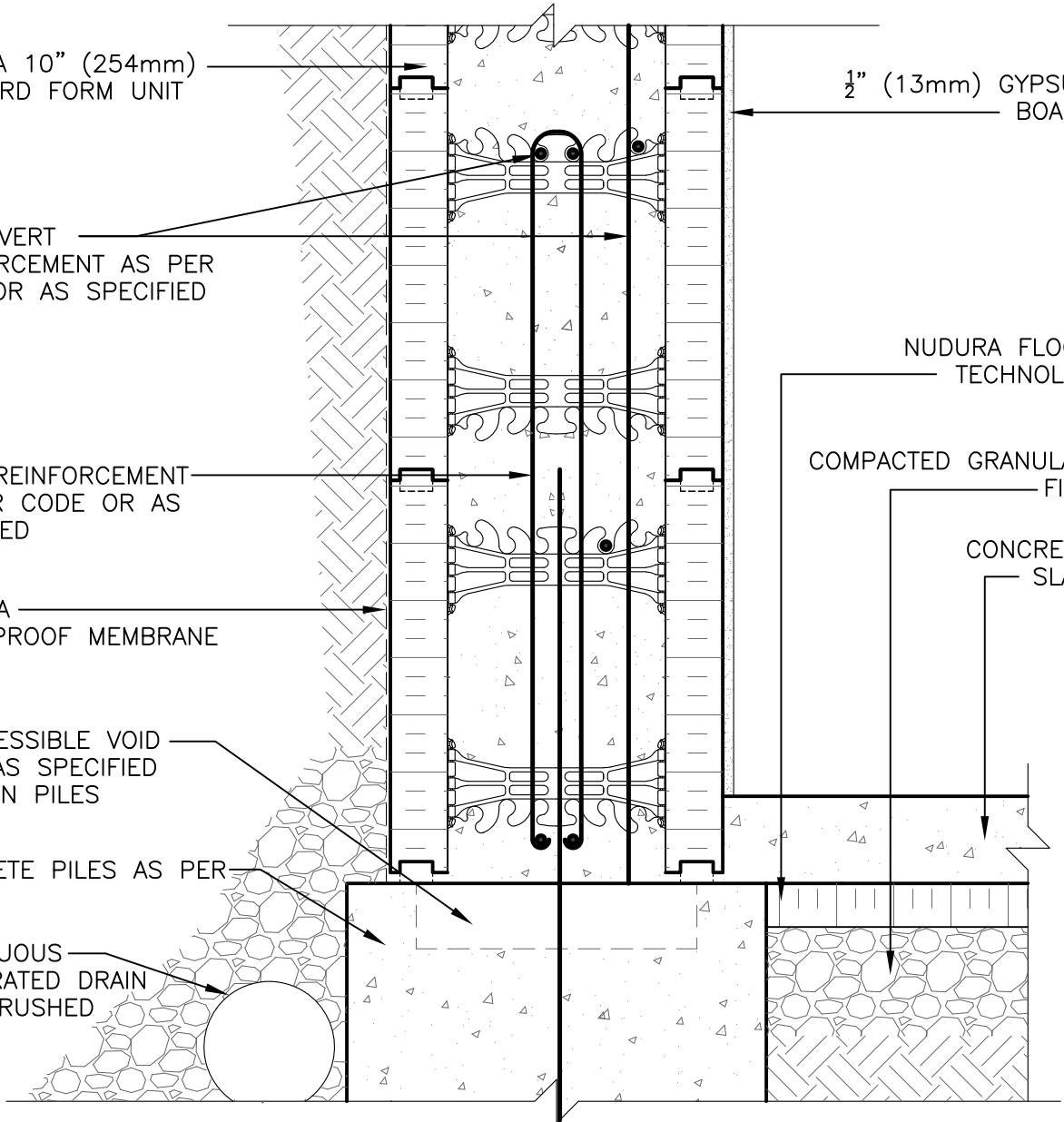
COMPACTED GRANULAR
FILL

CONCRETE
SLAB

COMPRESSIBLE VOID
FORM AS SPECIFIED
BETWEEN PILES

CONCRETE PILES AS PER
CODE

CONTINUOUS
PERFORATED DRAIN
WITH CRUSHED
STONE



DISCLAIMER NOTICE:
SPECIFIC INFORMATION
REQUIRED FOR COMPLIANCE
WITH LOCAL CODES IS THE
RESPONSIBILITY OF THE
DESIGNER



NUDURA

INTEGRATED BUILDING TECHNOLOGY

Building Value.

NUDURA 10" (254mm) FORM UNIT
STEM WALL ON PILES
WITH INSULATED CONCRETE SLAB
BELOW GRADE

REV. NO.
003 KS
REV. DATE:
FEB 2010
DRAWN BY:
T. VAN CLIEAF

DWG NO.
B10C06
SCALE:
1 : 8