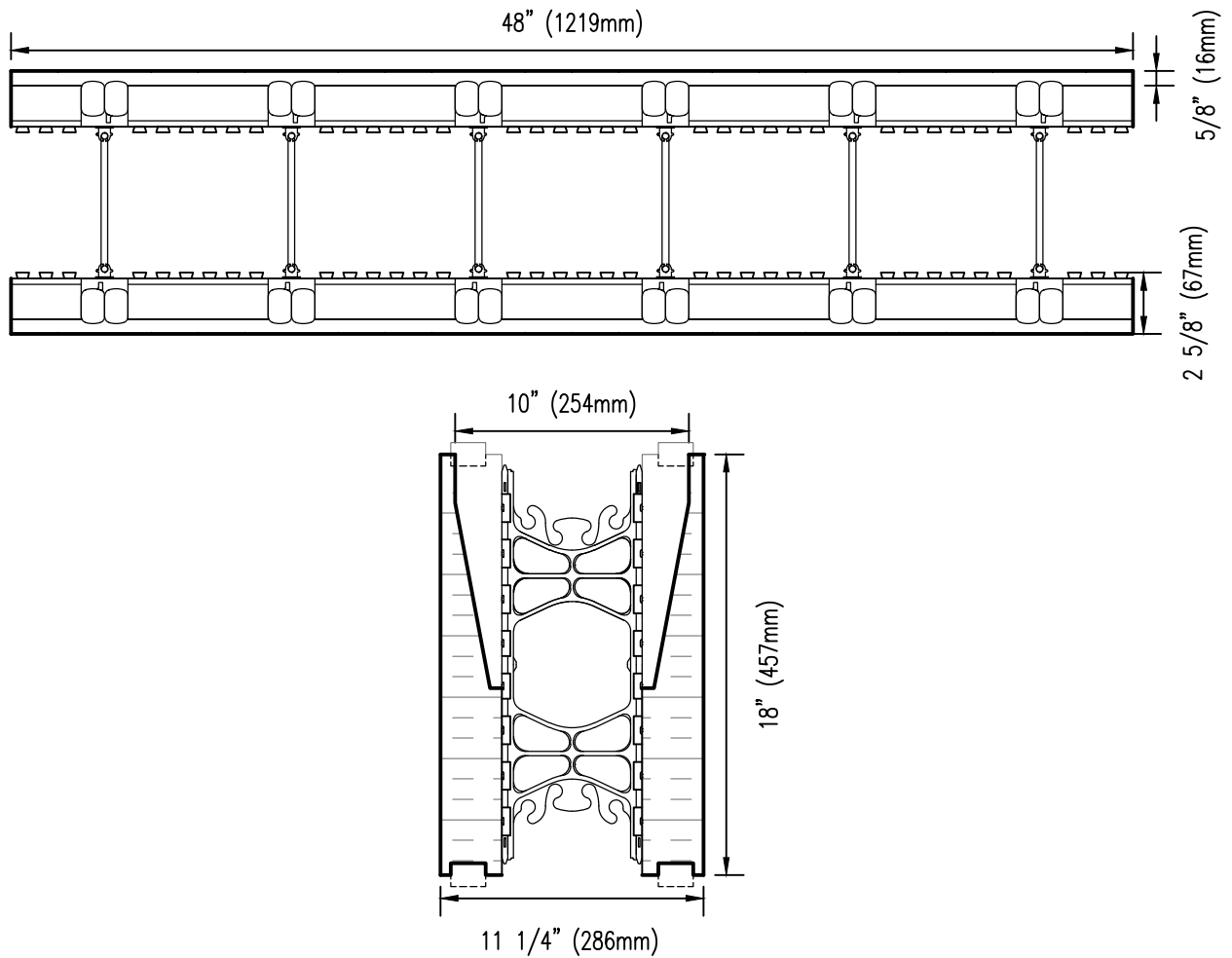


NOTE: PRODUCT LENGTH
 SUBJECT TO REGIONAL
 AVAILABILITY IN 4' (1219mm)
 OR 8' (2438mm) LENGTHS



DISCLAIMER NOTICE:
 SPECIFIC INFORMATION
 REQUIRED FOR COMPLIANCE
 WITH LOCAL CODES IS THE
 RESPONSIBILITY OF THE
 DESIGNER



NUDURA

INTEGRATED BUILDING TECHNOLOGY

Building Value.

NUDURA 6" (152mm)
 TWO SIDED TAPER TOP
 FORM UNIT

REV. NO.
 004 KS
 REV. DATE:
 MARCH 2014
 DRAWN BY:
 K. STILL

DWG NO.
 A6A05
 SCALE:
 1 : 8