

NUDURA 8" (203mm) STANDARD FORM UNIT

BRICK VENEER c/w 1" (25mm) AIR SPACE AND BRICK TIES

WET SET DOWELS TO MATCH VERTICAL REINFORCEMENT BETWEEN POUR OR AS SPECIFIED

THROUGH WALL FLASHING AND WEEP HOLES AS PER CODE OR AS SPECIFIED

FINISHED GRADE MINIMUM 6" (152mm) OR AS PER CODE (SEE NOTE)

$\frac{3}{16}$ " (5mm) ACRYLIC PARGE COAT WHERE EXTENDED ABOVE GRADE

NUDURA WATERPROOFING MEMBRANE

$\frac{1}{2}$ " (13mm) GYPSUM BOARD

HORIZ/VERT REINFORCEMENT AS PER CODE OR AS SPECIFIED

RIM JOIST

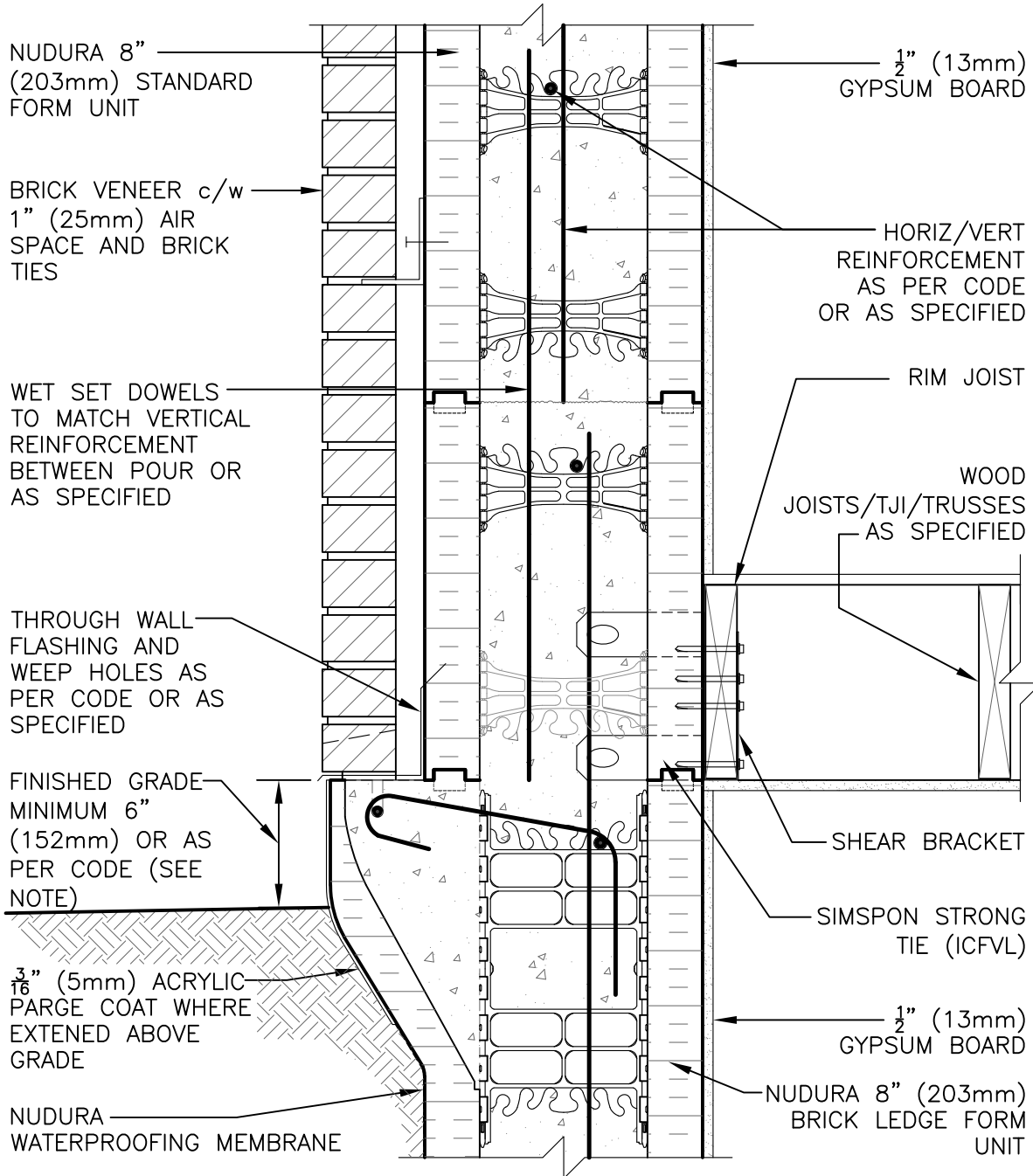
WOOD JOISTS/TJI/TRUSSES AS SPECIFIED

SHEAR BRACKET

SIMPSON STRONG TIE (ICFVL)

$\frac{1}{2}$ " (13mm) GYPSUM BOARD

NUDURA 8" (203mm) BRICK LEDGE FORM UNIT



DISCLAIMER NOTICE:
SPECIFIC INFORMATION
REQUIRED FOR COMPLIANCE
WITH LOCAL CODES IS THE
RESPONSIBILITY OF THE
DESIGNER

NOTE: FINISHED GRADE LEVEL SPECIFIED FOR FROST PRONE AREAS. FOR ALTERNATIVE GRADE LEVEL SEE DETAIL C6A34



INTEGRATED BUILDING TECHNOLOGY

Building Value.

NUDURA 8" (203mm) FORM UNIT
SIMPSON LEDGER HANGER SYSTEM
BRICK VENEER FINISH
PARALLEL TO WALL

REV. NO.
001 KS
REV. DATE:
AUGUST 2010
DATE:
T. VAN CLIEAF

DWG NO.
C8A23
SCALE:
1 : 8