

OPENING REINFORCEMENT  
AS PER CODE OR AS  
SPECIFIED

1/2" (13mm)  
GYPSUM BOARD

1 1/2" (38mm)  
MIN. COVER

NUDURA 6" (152mm)  
STANDARD FORM UNIT

VAPOR BARRIER LAPPED  
& SEALED TO FRAME

JAMB EXTENSION OR  
GYPSUM BOARD RETURN

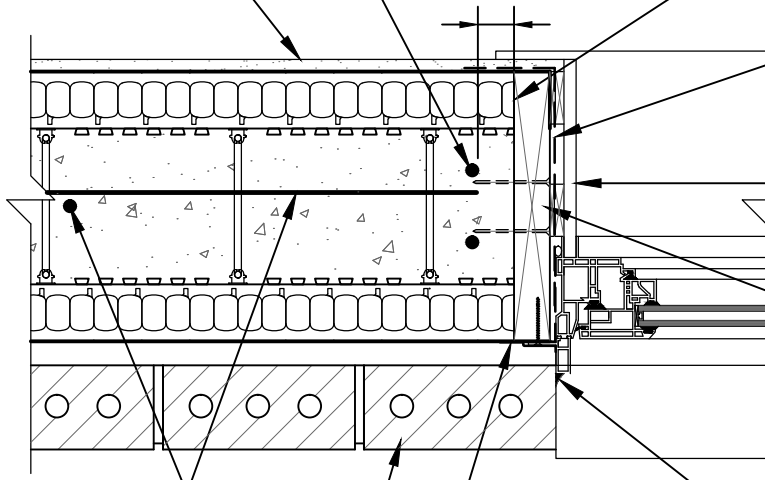
WOOD, VINYL, STEEL, ETC.  
BUCK MATERIAL FASTENED  
TO CONCRETE  
w/ EMBEDDED SPIRAL  
NAILS, BOLTS, SCREWS IN  
STAGGERED PATTERN, OR  
AS PER MANUFACTURERS  
SPECIFICATIONS

CONTINUOUS CAULKING  
AROUND FRAME AT  
CONTACT TO MASONRY

HORIZ/VERT  
REINFORCEMENT  
AS PER CODE OR  
AS SPECIFIED

BRICK VENEER c/w 1"  
(25mm) AIR SPACE AND  
BRICK TIES

JAMB TRIM FLASHING TAPE  
SEALED TO EPS FOAM BEHIND  
FINISH AS PER CODE OR AS SPECIFIED



**DISCLAIMER NOTICE:**  
SPECIFIC INFORMATION  
REQUIRED FOR COMPLIANCE  
WITH LOCAL CODES IS THE  
RESPONSIBILITY OF THE  
DESIGNER



**NUDURA**

**INTEGRATED BUILDING TECHNOLOGY**

*Building Value.*

NUDURA 6" (152mm) FORM UNIT  
WINDOW JAMB DETAIL  
FULL DEPTH WOOD ROUGH BUCK  
BRICK VENEER FINISH

REV. NO.  
000

DATE:  
SEPT 2010

DRAWN BY:  
K. STILL

DWG NO.

E6A06

SCALE:  
1 : 8