

NUDURA 12" (305mm)
STANDARD FORM UNIT

HORIZ/VERT
REINFORCEMENT AS PER
CODE OR AS SPECIFIED

ADDITIONAL BRACING
REQUIRED DURING
FLOOR SLAB POUR

BRICK VENEER c/w 1"
(25mm) AIR SPACE
AND BRICK TIES

WET SET DOWELS
FIELD BENT INTO SLAB
AS SPECIFIED

THROUGH WALL
FLASHING AS PER CODE
OR AS SPECIFIED

NUDURA 12" (305mm)
SITE ASSEMBLED
BRICK LEDGE FORM
UNIT

$\frac{3}{16}$ " (5mm) ACRYLIC
PARGE COAT

NUDURA WATERPROOF
MEMBRANE

$\frac{1}{2}$ " (13mm) GYPSUM
BOARD

CONCRETE SLAB

INSULATED CONCRETE FLOOR
FORM INSTALLED AS PER
MANUFACTURERS
SPECIFICATIONS

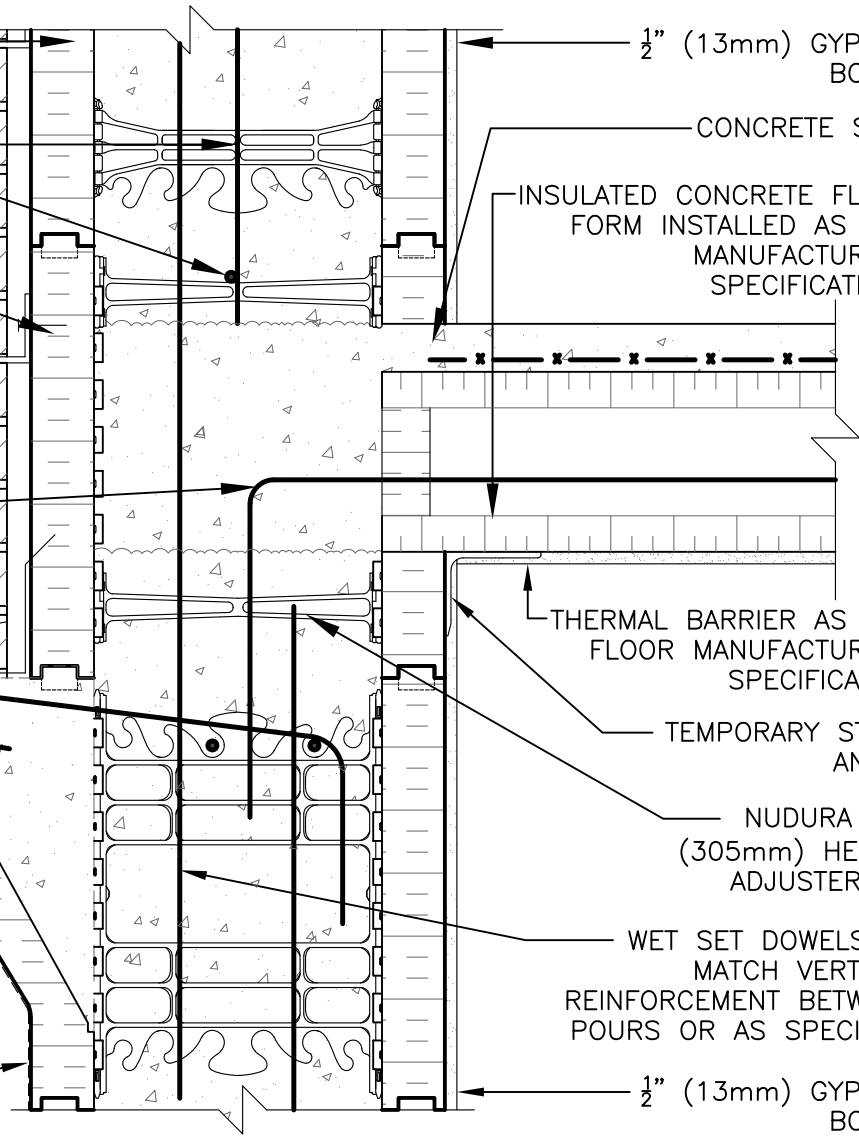
THERMAL BARRIER AS PER
FLOOR MANUFACTURERS
SPECIFICATION

TEMPORARY STEEL
ANGLE

NUDURA 12"
(305mm) HEIGHT
ADJUSTER TIE

WET SET DOWELS TO
MATCH VERTICAL
REINFORCEMENT BETWEEN
POURS OR AS SPECIFIED

$\frac{1}{2}$ " (13mm) GYPSUM
BOARD



DISCLAIMER NOTICE:
SPECIFIC INFORMATION
REQUIRED FOR COMPLIANCE
WITH LOCAL CODES IS THE
RESPONSIBILITY OF THE
DESIGNER



NUDURA 12" (305mm) FORM UNIT
ICFS CONNECTION
ICFS RESTING ON FORM
EXTERIOR SIDE WALL AT GRADE
BRICK VENEER FINISH

REV. NO.
003 KS
REV. DATE:
FEB 2010
DRAWN BY:
T. VAN CLIEAF

DWG NO.
D12D10
SCALE:
1 : 8