

NUDURA 8" (203mm)  
STANDARD FORM UNIT

EXTERIOR FINISH AS  
SPECIFIED

HORIZ/VERT  
REINFORCEMENT AS PER  
CODE OR AS SPECIFIED

ADDITIONAL BRACING  
REQUIRED DURING  
FLOOR SLAB POUR

WET SET DOWELS TO  
MATCH VERTICAL  
REINFORCEMENT  
BETWEEN POUR OR AS  
SPECIFIED

WET SET DOWELS  
FIELD BENT INTO  
FLOOR AS SPECIFIED

1/2" (13mm) GYPSUM  
BOARD

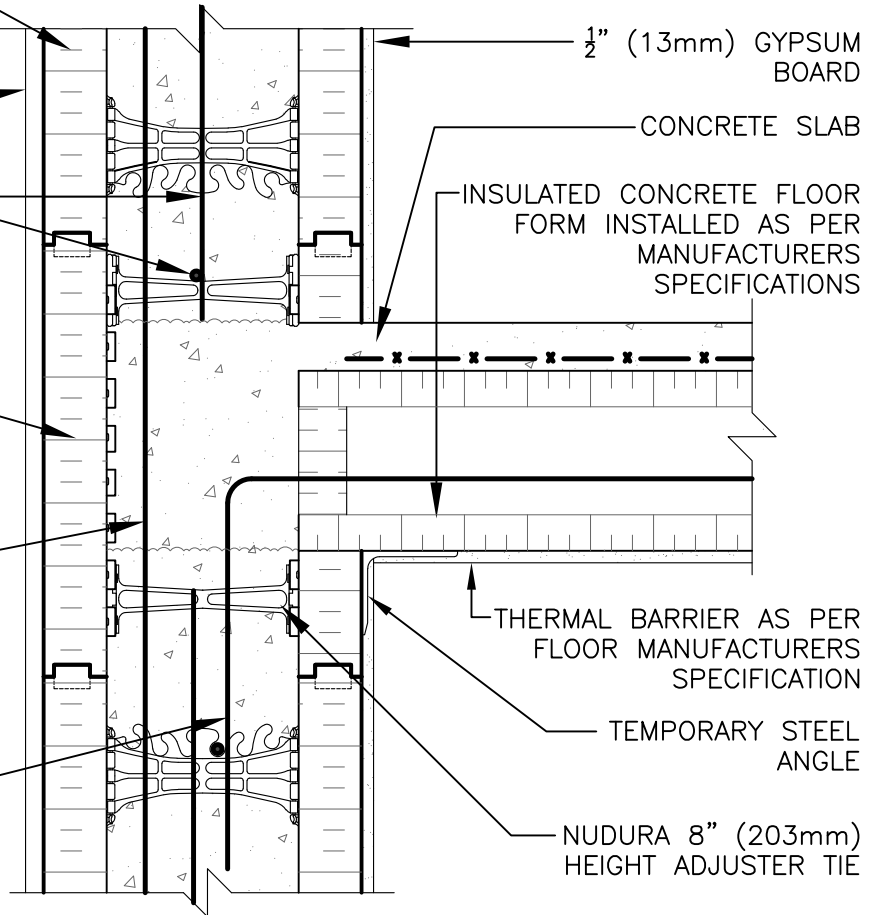
CONCRETE SLAB

INSULATED CONCRETE FLOOR  
FORM INSTALLED AS PER  
MANUFACTURERS  
SPECIFICATIONS

THERMAL BARRIER AS PER  
FLOOR MANUFACTURERS  
SPECIFICATION

TEMPORARY STEEL  
ANGLE

NUDURA 8" (203mm)  
HEIGHT ADJUSTER TIE



**DISCLAIMER NOTICE:**  
SPECIFIC INFORMATION  
REQUIRED FOR COMPLIANCE  
WITH LOCAL CODES IS THE  
RESPONSIBILITY OF THE  
DESIGNER



**NUDURA**

INTEGRATED BUILDING TECHNOLOGY

*Building Value.*

NUDURA 8" (203mm) FORM UNIT  
ICFS CONNECTION  
ICFS RESTING ON FORM  
EXTERIOR SIDE WALL  
EXTERIOR FINISH AS SPECIFIED

REV. NO.  
003 KS

DATE:  
APRIL 2010

DRAWN BY:  
J. NEILON

DWG NO.

D8D02

SCALE:

1 : 8