

NUDURA 12" (305mm)
STANDARD FORM UNIT

HORIZ/VERT
REINFORCEMENT AS PER
CODE OR AS SPECIFIED

ADDITIONAL BRACING
REQUIRED DURING
FLOOR SLAB POUR

EXTERIOR FINISH AS
SPECIFIED

WET SET DOWELS
FIELD BENT INTO SLAB
AS SPECIFIED

1/2" (13mm) GYPSUM
BOARD

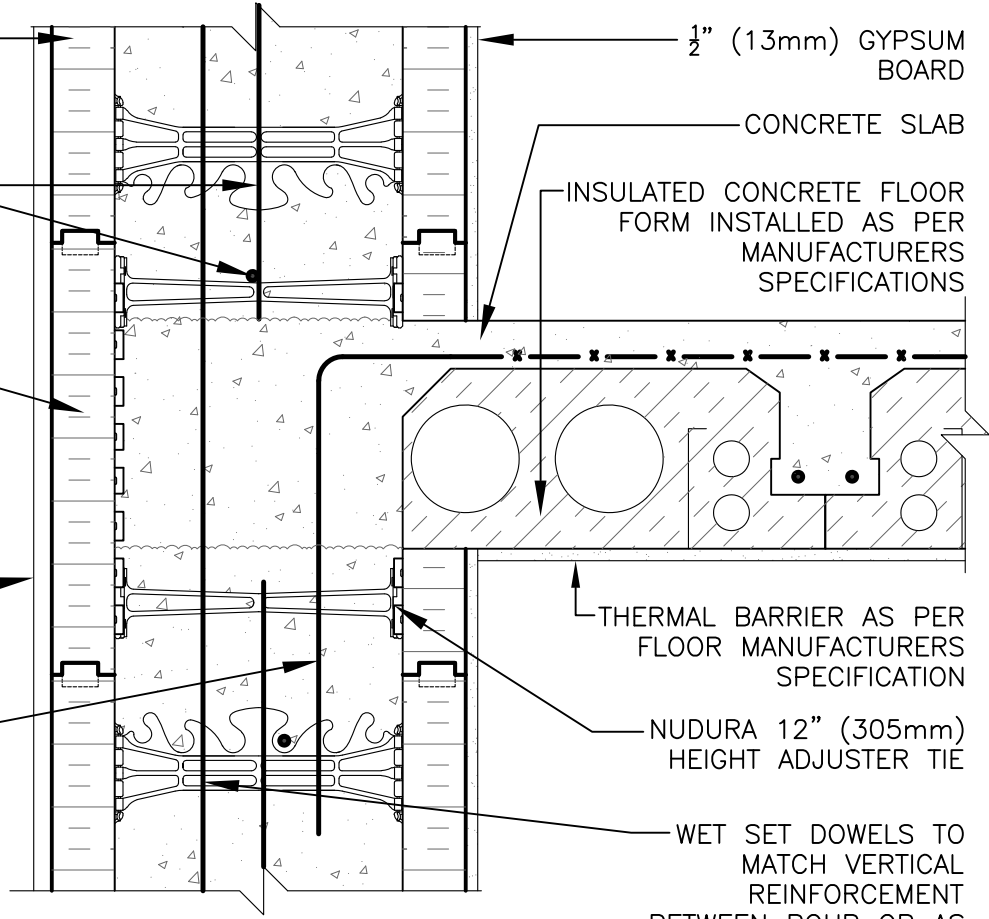
CONCRETE SLAB

INSULATED CONCRETE FLOOR
FORM INSTALLED AS PER
MANUFACTURERS
SPECIFICATIONS

THERMAL BARRIER AS PER
FLOOR MANUFACTURERS
SPECIFICATION

NUDURA 12" (305mm)
HEIGHT ADJUSTER TIE

WET SET DOWELS TO
MATCH VERTICAL
REINFORCEMENT
BETWEEN POUR OR AS
SPECIFIED



DISCLAIMER NOTICE:
SPECIFIC INFORMATION
REQUIRED FOR COMPLIANCE
WITH LOCAL CODES IS THE
RESPONSIBILITY OF THE
DESIGNER



NUDURA 12" (305mm) FORM UNIT ICFS CONNECTION ICFS RESTING ON FORM EXTERIOR SIDE WALL EXTERIOR FINISH AS SPECIFIED	
REV. NO. 003 KS	DWG NO. D12D01
DATE: APRIL 2010	SCALE: 1 : 8
DRAWN BY: T. VAN CLIEAF	