

FLASHING AS SPECIFIED

WOOD BLOCKING AND PLYWOOD AT 5° SLOPE

NON-COMBUSTIBLE FIBERGLASS BATT INSULATION ON VAPOR BARRIER

EPS CANT STRIP

FIBER BOARD SUBSTRATE w/ ROOF MEMBRANE ON 3 1/2" (89mm) RIGID INSULATION

EXTERIOR FINISH AS SPECIFIED

V-CLIP WALL PANEL ANCHOR

FORM PANELS c/w INSERT WEBS-CUT TO SUIT ROOF CONNECTION-ADDITIONAL FORM SUPPORT AS REQUIRED

HOLLOW CORE PRECAST SLAB

FINISH AS SPECIFIED

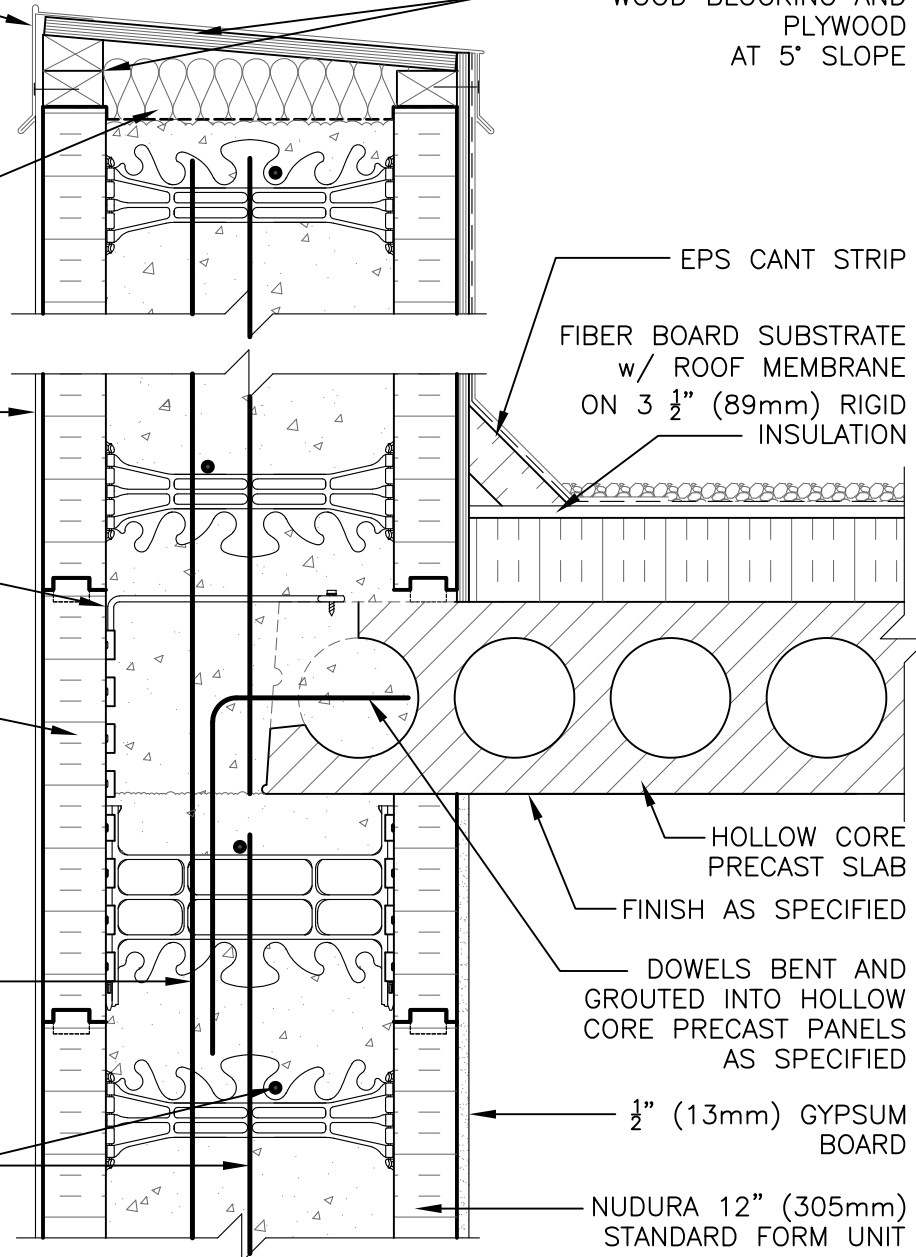
WET SET DOWELS TO MATCH VERTICAL REINFORCEMENT BETWEEN POUR OR AS SPECIFIED

DOWELS BENT AND GROUTED INTO HOLLOW CORE PRECAST PANELS AS SPECIFIED

HORIZ/VERT REINFORCEMENT AS PER CODE OR AS SPECIFIED

1/2" (13mm) GYPSUM BOARD

NUDURA 12" (305mm) STANDARD FORM UNIT



DISCLAIMER NOTICE:  
SPECIFIC INFORMATION  
REQUIRED FOR COMPLIANCE  
WITH LOCAL CODES IS THE  
RESPONSIBILITY OF THE  
DESIGNER



NUDURA 12" (305mm) FORM UNIT  
HOLLOW CORE PRECAST ROOF  
EXTERIOR SIDE WALL DETAIL  
EXTERIOR FINISH AS SPECIFIED

REV. NO. 003 KS	DWG NO. F12E03
DATE: APRIL 2010	
DRAWN BY: T. VAN CLIEAF	SCALE: 1 : 8