

FLASHING AS SPECIFIED

NON-COMBUSTIBLE FIBERGLASS BATT INSULATION ON VAPOR BARRIER

BRICK VENEER c/w 1" (25mm) AIR SPACE AND BRICK TIES

CONTINUOUS STEEL ANGLE AS SPECIFIED

GYPSUM BOARD FINISHED/FIRE STOP INSTALLED AT JOISTS AS PER CODE

U BRACKET ANCHOR INSERT

WET SET DOWELS TO MATCH VERTICAL REINFORCEMENT BETWEEN POUR OR AS SPECIFIED

HORIZ/VERT REINFORCEMENT AS PER CODE OR AS SPECIFIED

WOOD BLOCKING AND PLYWOOD AT 5° SLOPE

EPS CANT STRIP

FIBER BOARD SUBSTRATE w/ ROOF MEMBRANE ON 3 1/2" (89mm) RIGID INSULATION

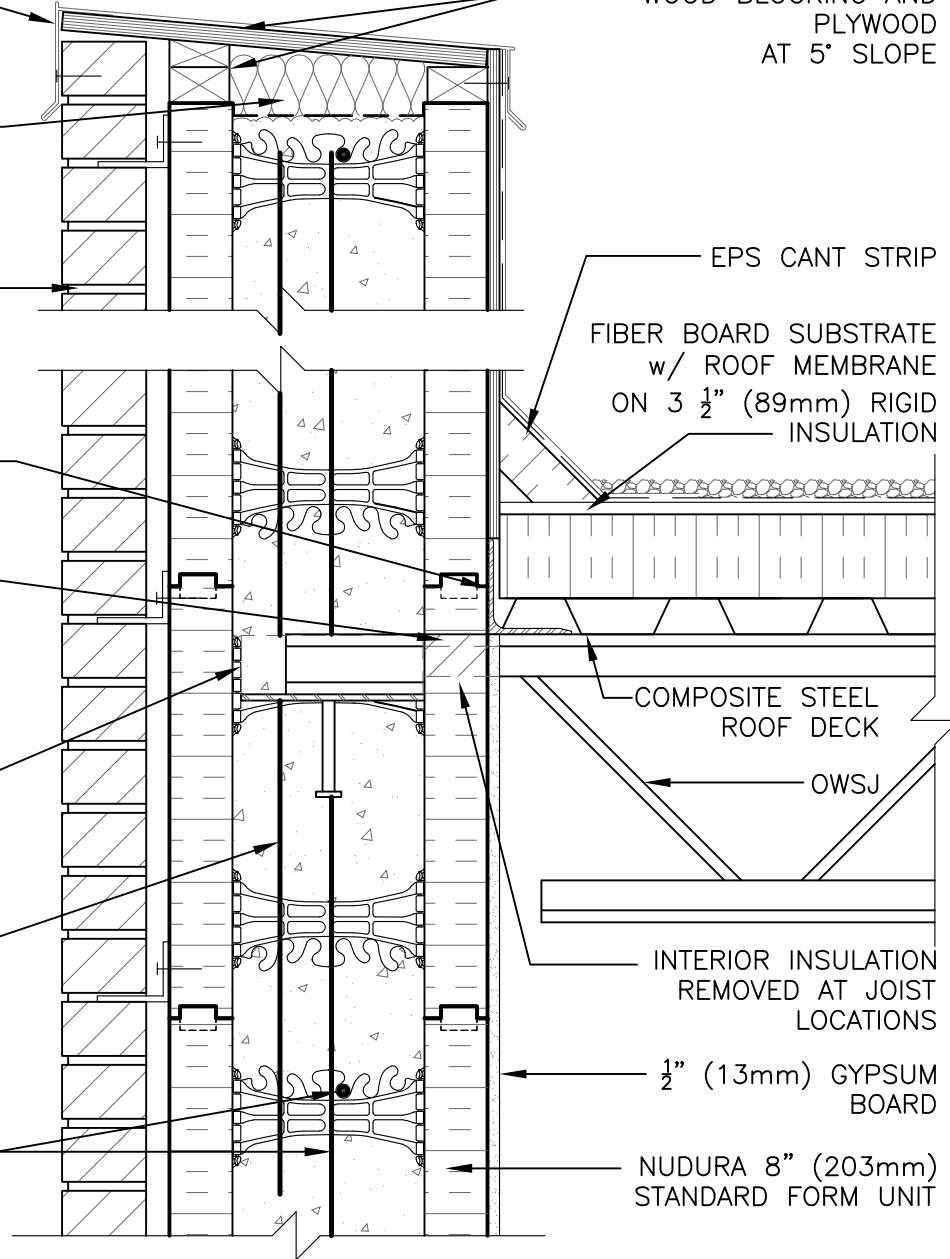
COMPOSITE STEEL ROOF DECK

OWSJ

INTERIOR INSULATION REMOVED AT JOIST LOCATIONS

1/2" (13mm) GYPSUM BOARD

NUDURA 8" (203mm) STANDARD FORM UNIT



DISCLAIMER NOTICE:
 SPECIFIC INFORMATION
 REQUIRED FOR COMPLIANCE
 WITH LOCAL CODES IS THE
 RESPONSIBILITY OF THE
 DESIGNER



NUDURA

INTEGRATED BUILDING TECHNOLOGY

Building Value.

NUDURA 8" (203mm) FORM UNIT
 STEEL JOIST ROOF DETAIL
 BEARING WALL
 BRICK VENEER FINISH

REV. NO.
004 KS

DATE:
APRIL 2010

DRAWN BY:
T. VAN CLIEAF

DWG NO.
F8C11

SCALE:
1 : 8