

FLASHING AS SPECIFIED

NON-COMBUSTIBLE FIBERGLASS BATT INSULATION ON VAPOR BARRIER

BRICK VENEER c/w 1" (25mm) AIR SPACE AND BRICK TIES

FORM PANELS c/w INSERT WEBS-CUT TO SUIT ROOF CONNECTION-ADDITIONAL FORM SUPPORT AS REQUIRED

WET SET DOWELS TO MATCH VERTICAL REINFORCEMENT BETWEEN POUR OR AS SPECIFIED

HORIZ/VERT REINFORCEMENT AS PER CODE OR AS SPECIFIED

WOOD BLOCKING AND PLYWOOD AT 5° SLOPE

EPS CANT STRIP

FIBER BOARD SUBSTRATE w/ ROOF MEMBRANE ON 3 1/2" (89mm) RIGID INSULATION

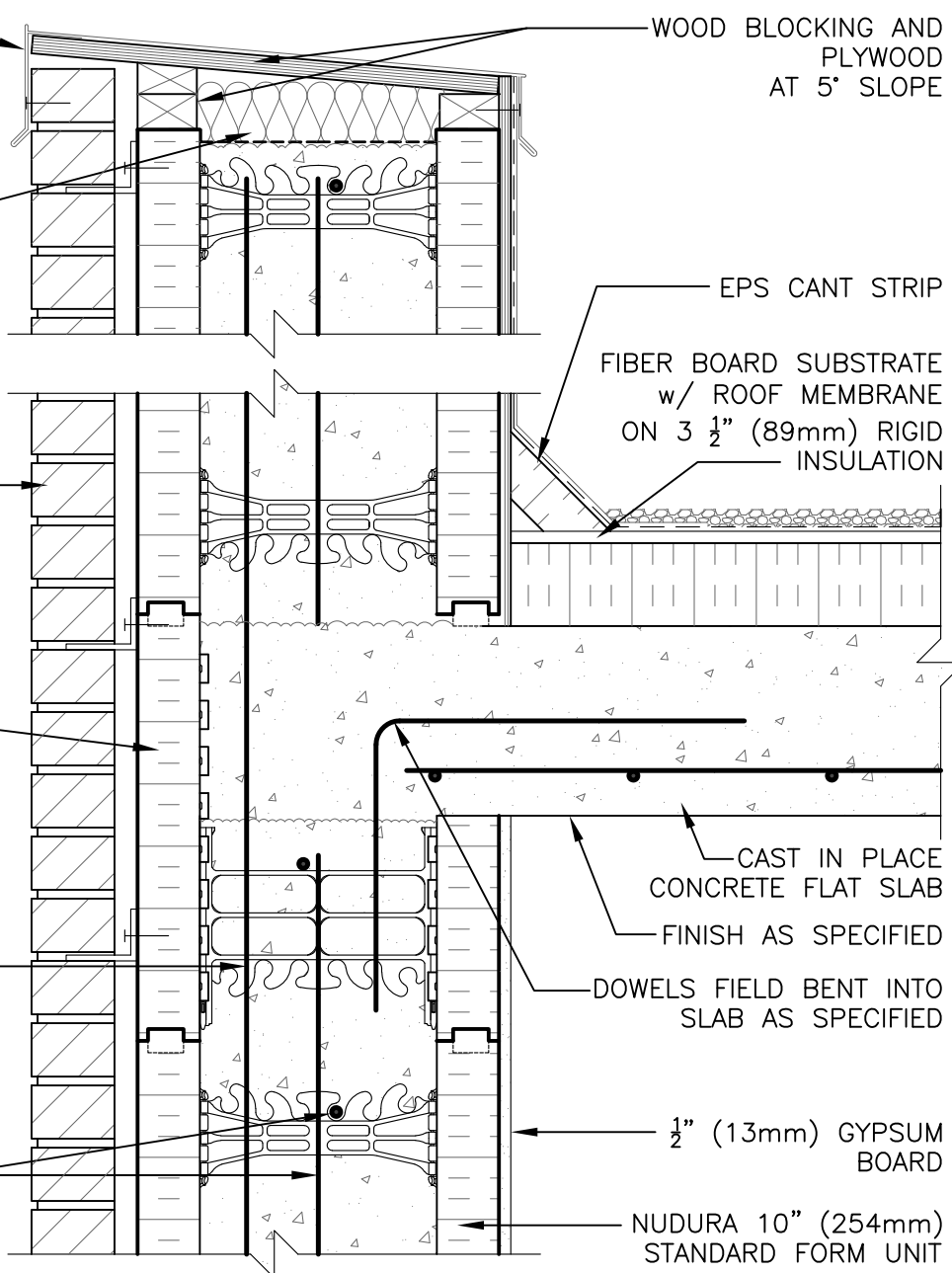
CAST IN PLACE CONCRETE FLAT SLAB

FINISH AS SPECIFIED

DOWELS FIELD BENT INTO SLAB AS SPECIFIED

1/2" (13mm) GYPSUM BOARD

NUDURA 10" (254mm) STANDARD FORM UNIT



**DISCLAIMER NOTICE:**  
 SPECIFIC INFORMATION  
 REQUIRED FOR COMPLIANCE  
 WITH LOCAL CODES IS THE  
 RESPONSIBILITY OF THE  
 DESIGNER



**NUDURA**

INTEGRATED BUILDING TECHNOLOGY

*Building Value.*

NUDURA 10" (254mm) FORM UNIT  
 CONCRETE FLAT PLATE  
 EXTERIOR BEARING WALL DETAIL  
 BRICK VENEER FINISH

REV. NO. 000	DWG NO. F10G01
DATE: APRIL 2010	
DRAWN BY: K. STILL	SCALE: 1 : 8