

# INNOVATION MEETS SIMPLICITY: THE FUTURE OF HOME BUILDING



Shaping residential construction with comprehensive solutions  
from Tremco Construction Products Group (CPG)





# THE TREMCO CPG ADVANTAGE

## Products and systems that offer unique advantages over traditional building methods.

Groundbreaking solutions from Tremco CPG, like our HercuWall™ system and Nudura Insulated Concrete Forms (ICF), make us a trailblazer and trusted partner. Nudura ICF technology provides a superior building envelope that is both energy-efficient and disaster-resilient. Our high-quality materials streamline building processes to save on labor costs, reduce timelines and provide project efficiencies.

Beyond products, we offer expert planning and support through hands-on training, ensuring projects are completed efficiently and meet the highest building standards. Through our dedication to energy efficiency, sustainability, and build quality, we empower builders to reduce construction time while improving home comfort and longevity to owners.

## Your Challenges, Our Solutions

Labor shortages, energy compliance and rising material costs challenge builders, but Nudura's HercuWall system simplifies construction with pre-fabricated, numbered panels that cut labor needs, speed up timelines and meet energy standards. Nudura ICFs add further efficiency, slashing energy costs by up to 60%\*, while durable, disaster-resistant walls ensure long-term reliability. Builders can deliver sustainable, high-quality homes efficiently and cost-effectively.

### Solutions At a Glance:

- + Efficiency in construction and labor savings
- + Energy compliance and sustainability
- + Reliable supply chain and delivery timelines
- + Systems designed to reduce callbacks and improve durability
- + Rigorous testing for compatibility



\*As proven by third party testing conducted by CLEB Laboratories and the Insulating Concrete Forms Manufacturers Association (ICFMA)

# HERCUWALL™

The Insulated Concrete Panel (ICP) System specifically designed to make residential construction more efficient.

## Product Overview

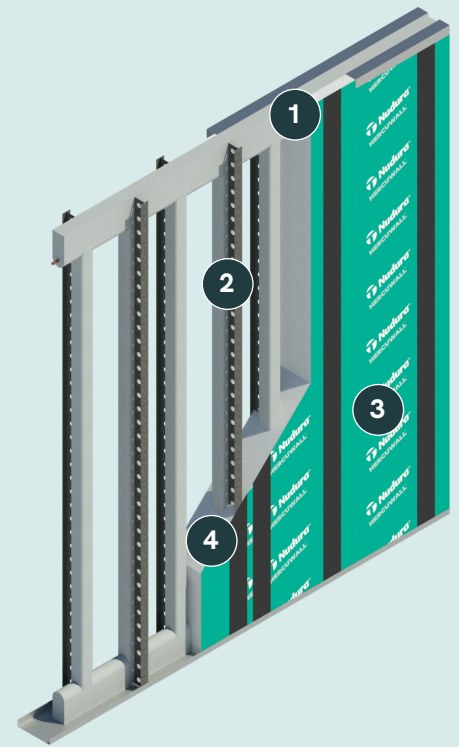
HercuWall™ is the Insulated Concrete Panel (ICP) System that eliminates costly and time-consuming steps. Fabricated off-site and delivered ready to assemble, HercuWall delivers an effective R31 that provides significant energy savings over the life of a home compared to traditional building methods and a lab tested STC sound rating for a quieter structure. Streamline your building schedules and limit the variables that can cause problems, all while increasing the quality and sustainability of your project.

## Features & Benefits

- ✓ Increases jobsite efficiency and safety by having an integrated air barrier applied off site
- ✓ Maximizes recycling and eliminates jobsite waste
- ✓ Requires less labor and accelerates project schedules when compared to wood frame builds
- ✓ Built for long-term comfort and occupant safety

■ *HercuWall is one of the highest-quality and most energy-efficient concrete panelized systems available for the construction industry. The professional collaboration team ensures all efforts are made to deliver a more versatile, construction-friendly wall system.*

– Felten Group, Inc.  
Architects and Engineers



### System Components:

1. Concrete
2. HercuStrip Technology
3. Polyester Weather-Resistant Film
4. Insulating Foam (EPS)





# HERCUWALL™

## Solve the Labor Puzzle and Build Faster

In a market where skilled labor is stretched thin, you need a new approach to building. Traditional methods are no longer enough to keep projects on schedule and on budget. Tremco CPG provides a proven solution that empowers you to build more efficiently, with less reliance on specialized trade crews. We help you take control of your projects and your timelines.



### Reduce Crew Size

HercuWall panels are numbered and delivered ready to assemble, requiring smaller, more efficient installation teams. You can achieve more with the resources you already have.



### Accelerate Timelines

A 3-in-1 system that incorporates the structural component, insulation and weather-resistant barrier eliminates steps on the jobsite, reduces weather delays and speeds the construction process.



### Simplify Training

The straightforward installation process means you can train crews quickly. You are no longer dependent on finding highly specialist tradespeople. Framers, masons, and steel erectors can all adapt to the system with ease.



### Built for Strength

Engineered for superior strength and energy efficiency, HercuWall withstands winds up to 235 mph while delivering up to 40% energy savings—perfect for inclement weather

“Bottom line is that HercuWall makes me a better builder. We can deliver extremely durable, super energy-efficient homes to our customers on time, in greater quantity, and at a higher level of predictability by utilizing HercuWall.

– Mike Mancini  
President, SoDella Construction







## Build Beyond the Code with HercuWall

Energy efficiency isn't just a code requirement; it's a powerful selling point. Homebuyers and institutional investors are demanding homes that offer lower utility bills, greater comfort, and a smaller environmental footprint. Tremco CPG provides integrated systems that empower you to meet and exceed these expectations, creating durable, sustainable homes that deliver long-term value.

## Smarter Systems for Superior Performance

Our solutions work together to create a complete, high-performance building envelope. HercuWall, Nudura and Tremco products help you build homes that are fundamentally more efficient.

- **Slash Energy Costs:** A tighter, better-insulated building envelope significantly reduces heating and cooling loads. This allows for smaller, less expensive HVAC systems and provides homeowners with verifiable savings on their monthly utility bills — a benefit they can see and feel.
- **Achieve Net-Zero Goals:** Our systems provide the foundation for building net-zero energy homes. By creating an exceptionally efficient structure, you make it easier and more cost-effective to reach the highest standards of sustainable construction.
- **Build to Last:** Sustainability is about more than just energy. Our durable materials resist moisture, mold, and structural decay, reducing callbacks and ensuring the longevity of the homes you build.



### Fire Resistance (ASTM E119)

HercuWall can achieve a 1-hour and 2-hour fire-resistance rating. The system is approved for use in exterior and interior walls in non-combustible construction types.



### Hurricane & Impact Resistance (FBC/HVHZ)

The HercuWall® system delivers proven performance in Florida's toughest conditions — meeting the 2023 and 2020 Florida Building Code (FBC) and approved for use in the High Velocity Hurricane Zone (Miami-Dade and Broward counties: FL#47492).



### Key Material & Structural Specifications

Engineered for use with high-strength concrete with a minimum compressive strength of 4,000 psi. The integrated steel ShearStrip is made from G90 galvanized steel (ASTM A653/A653M SS Grade 40) for superior corrosion resistance and strength.

Scan or click  
for the full  
code report.





## THE BUILDER'S CHOICE FOR COMPLIANCE

In a rapidly evolving regulatory landscape, staying compliant isn't just about meeting minimums — it's about future-proofing your projects. As state energy codes tighten, traditional building methods are struggling to keep up.

### THE CHALLENGE

IEEC mandating electrification and solar readiness.

Mandatory blower-door testing  $\leq 7$  ACH50 and high-velocity hurricane zones requirements.

Air-leakage limits  $\leq 5$  ACH50 and increasing demand for thermal efficiency.

### HERCUWALL SOLUTION

With an R-31 insulation value that far surpasses standard framing, HercuWall created the ultra-efficient envelope required for net-zero ready homes. Our superior thermal mass reduces HVAC loads, making full electrification and solar integration more efficient and cost-effective.

HercuWall provides a continuous air barrier that easily achieves air leakage rates well below 3 ACH50. Furthermore, the system is hurricane-rated for winds up to 235 mph, offering peace of mind and simplified compliance in storm-prone coastal areas.

The HercuWall panel system minimizes thermal bridging found in framing and CMU construction, with durable EPS insulation that lasts without degrading or sagging. Therefore, it delivers consistent, high-performance results that make passing air-leakage tests a standard procedure.

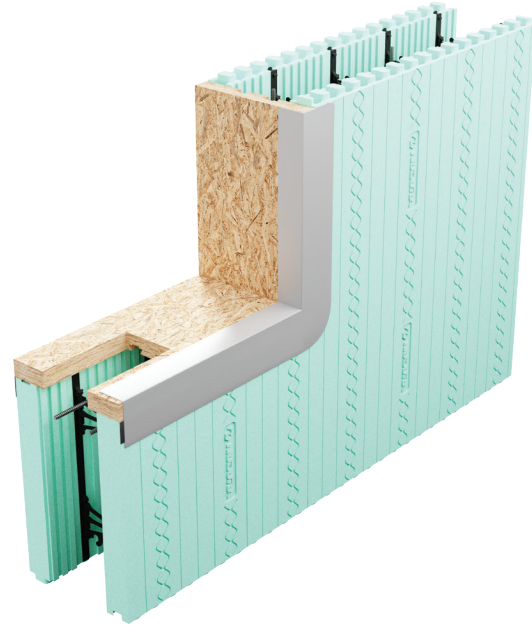


# NUDURA® ICF SERIES

Insulated Concrete Forms (ICF) built for unmatched design flexibility and sustainability

## Product Overview

Engineered for efficiency, the Nudura ICF Series combines formwork, framing, insulation, and a vapor barrier into one simple step. Built from high-density Expanded Polystyrene (EPS) foam and durable polypropylene plastic webs, these forms create a robust flat wall system when filled with reinforced concrete. This innovative approach simplifies installation, reduces on-site waste, and accelerates your project timelines.



## Features & Benefits

- ✓ Superior insulation and energy efficiency reduces utility bills by up to 60%
- ✓ Offers significant sound reduction from external sources, ensuring a quieter indoor space
- ✓ Enhances building durability with up to four hours of fire resistance
- ✓ Built to withstand winds up to 250 mph (402 km/h) and resist impact from flying debris



# MAKING THE CONNECTION



## Why Integrate Nudura ICF and HercuWall?

This hybrid approach allows you to utilize Nudura ICF for robust foundations or lower levels, and transition seamlessly to HercuWall for above-grade walls. The result is a continuous, insulated concrete structure that goes up in a fraction of the time of traditional framing.



**Unified Supply Chain**



**Job Site Simplification**



**Resilient Design**

## Engineered for Connection

### The Mechanical Bond

The connection relies on a specialized punched bottom track system. HercuWall's bottom track features 3-inch squares spaced at 8 inches on-center. When placed on top of the Nudura ICF wall, these openings allow for a true concrete-to-concrete connection, ensuring load transfer and simple integration of connecting hardware.

### Reinforced Stability

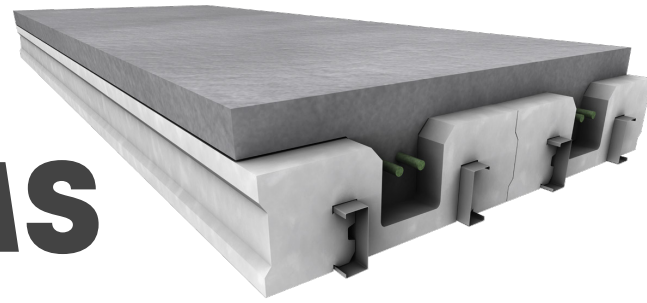
Nudura ICF and HercuWall are tied together using standard reinforcement protocols:

- **Vertical Integration:** #4 rebar dowels anchor deeply into both the Nudura concrete core and the HercuWall system, locking the levels together.
- **Flush Alignment:** The HercuWall track is designed to sit flush with the Nudura block edge, simplifying exterior cladding application and interior finishing.





# NUDURA DECK SYSTEMS

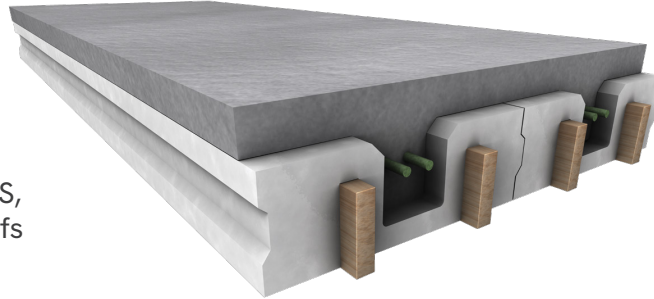


Insulated Steel or Wood Rib Systems for  
Elevated Concrete

## Product Overview

Transform your construction projects with Nudura Deck SRS or WRS, the advanced insulation formwork for elevated concrete floors, roofs and decks. Engineered for versatility, Nudura deck systems offer customizable lengths and supports expansive clear spans of up to 50' (15.24 M), making them the ideal solutions for both efficiency and performance.

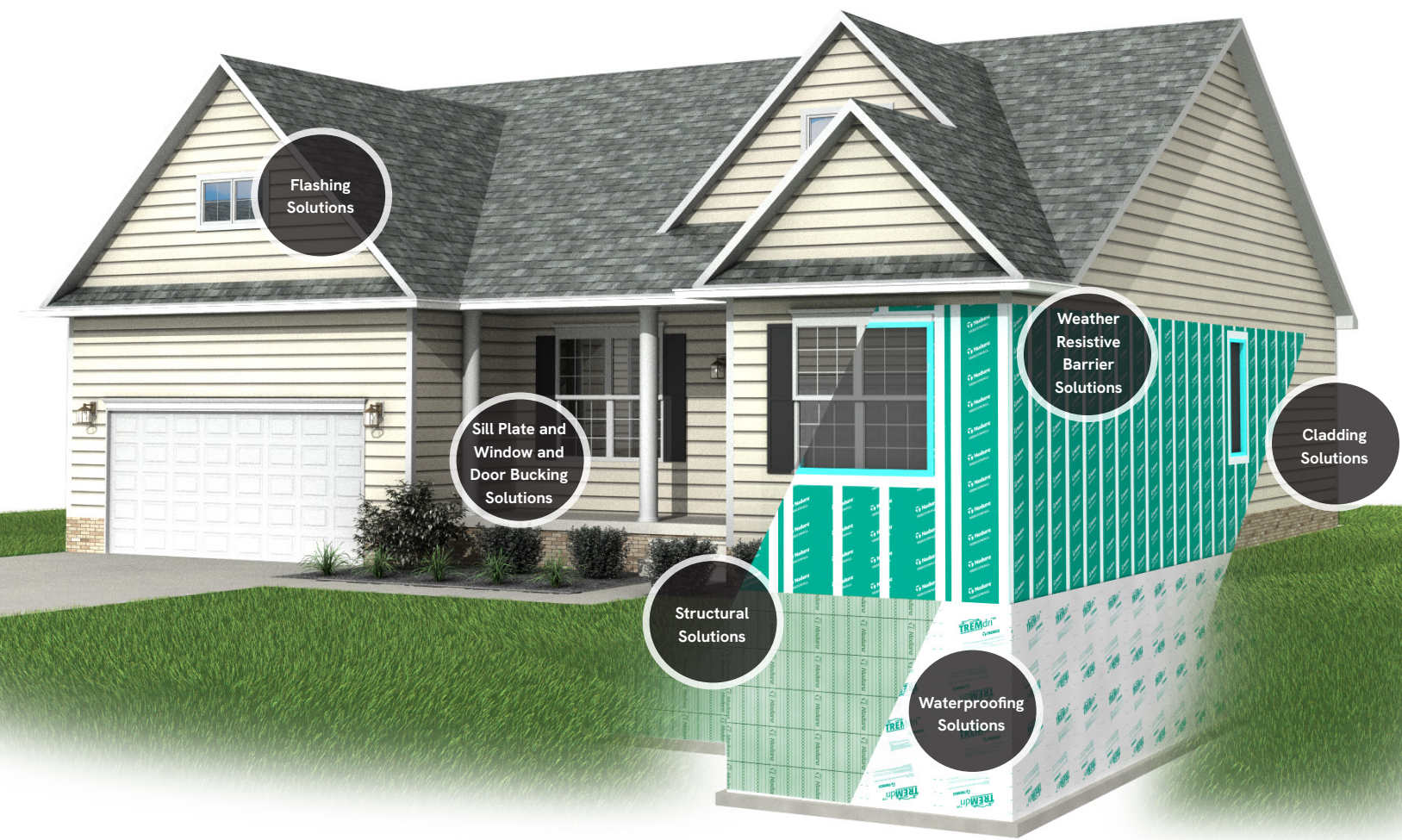
Enjoy the peace and quiet of solid concrete construction without the weight and complexity. Nudura Deck provides a lightweight, versatile and sound-dampening alternative to traditional methods. It creates remarkably quiet, secure and energy-efficient structures, making it the premier choice for homes.



## Features & Benefits

- ✓ **Quiet, Efficient Floors & Roofs:** Construct exceptionally quiet and comfortable concrete floors and roofs, perfect for pairing with energy-efficient in-floor heating systems.
- ✓ **Expanded Living Space:** Create economical, post-free living areas under garages for a comfortable, moisture-free space with limitless design options.
- ✓ **Versatile Porch Caps:** Convert the space under your front porch into a low-cost safe room or extra storage area.
- ✓ **Durable, Maintenance-Free Decks:** Build a sustainable outdoor living space that supports heavy loads like hot tubs and snow, without the worry of rot, mold or staining.





## Benefits for Build-to-Rent Properties

Build-to-rent home builders need solutions that maximize value while meeting tight construction timelines. The Nudura line of insulation products and systems from Tremco CPG brands is designed to accelerate build times and eliminate compatibility risks, combining multiple steps into a single, efficient process for faster occupancy and simplified project management.

Durability and long-term value are crucial for rental portfolios. Nudura ICFs feature an insulated concrete structural core that provides exceptional resistance to weather and noise—significantly reducing maintenance and turnover costs while ensuring optimal energy efficiency for lower operating expenses. This translates directly into key advantages for builders and property managers:

- **Enhanced Rentability and Marketability:** Easier to market and attract tenants thanks to lower energy costs and improved comfort.
- **Lower Energy Bills:** Greater efficiency means lower utility costs, boosting affordability for residents.
- **Superior Occupant Comfort:** Quiet, consistent and comfortable living environments.
- **Attract Long-Term Residents:** Greater comfort and affordability help reduce turnover.
- **Standardized Floorplans:** Simplifies construction and controls costs across multiple units.

The Tremco CPG unified warranty further streamlines operations. By eliminating the need to juggle multiple manufacturers, builders minimize administrative burdens, avoid multiple manufacturer claims, and gain lasting peace of mind.



# BUILD SMARTER, BUILD STRONGER

With a comprehensive single source warranty for all building envelopes

Waterproofing Solutions	Tremco's industry-leading below-grade waterproofing technologies ensure watertight, durable foundations. From roller/spray applied to peel & stick membranes, we have a waterproofing solution perfect for any project.
Sill Plate and Window and Door Bucking Solutions	Prebuck solutions provide strong, fast, and smart options for sills, windows, and doors. Made with TimberStrand LSL treated with zinc borate, they resist insects, decay, and are safe for concrete and metal contact.
Flashing Solutions	Tremco provides a comprehensive product range, including self-adhered roll membranes and flexible sealants, designed to prevent air, vapor, and water infiltration around windows and doors, ensuring superior performance on demanding job sites.
Weather Resistive Barrier Solutions	Tremco weather resistive barrier (WRB) solutions deliver a more effective, permanent, and complete weather-resistant barrier than traditional house wrap products, protecting walls from liquid moisture in the form of rain, sleet and snow.
Cladding Solutions	For durable, stylish cladding that protects foundations from grade line to exterior finish, we offer solutions combining aesthetics with unmatched toughness.
Sealant and Adhesive Solutions	Tremco high-performance sealants, from silicones to hybrids, offer superior adhesion, flexibility and durability for windows, doors and exterior joints.
Dryvit Facade Solutions	Dryvit systems provide continuous insulation (CI) that enhances energy efficiency, reduces maintenance, and ensures a leak-free building envelope. Engineered for all climates, these systems meet modern energy codes while offering durable, sustainable, and customizable finishes for any project.





866-468-6299 | [nudura.com](https://nudura.com)

