

NOTES:

1) FOR OPTIMAL REINFORCEMENT PLACEMENT IN THE NUDURA FORM, SPACING OF HORIZONTAL REINFORCEMENT TO BE SPECIFIED AT 18" (457mm) O.C. AND VERTICAL REINFORCEMENT TO BE SPECIFIED AT MULTIPLES OF 8" (203mm) O.C. REFER TO NUDURA REINFORCEMENT PLACEMENT DETAILS.

This detail is for general informational purposes only. The project design professional determines, in its sole discretion, whether this detail or a functionally equivalent detail is best suited for the project with respect to any architecture, engineering, and design requirements, including any local building code requirements. If this document is not reviewed and the product is not approved for use by a licensed design professional, the customer agrees that the detail may contain substantive flaws requiring correction, and hereby releases Tremco CPG Inc. from any and all liability related to the design and installation of the product. This detail is subject to change without notice. Contact Tremco to ensure you have the most recent version.

Standard Form Unit Profiles



Nudura Technical Support: 866-468-6299
International: +1 705-726-9499

Detail: Nudura 6" (152mm) Standard Form Unit STC/Fire Wall, Insulated Slab

Drawn by: TVC

Checked by: KS

Scale: 1:8

Revision #: 04

Revised by: KAB

Date: 10/15/2025

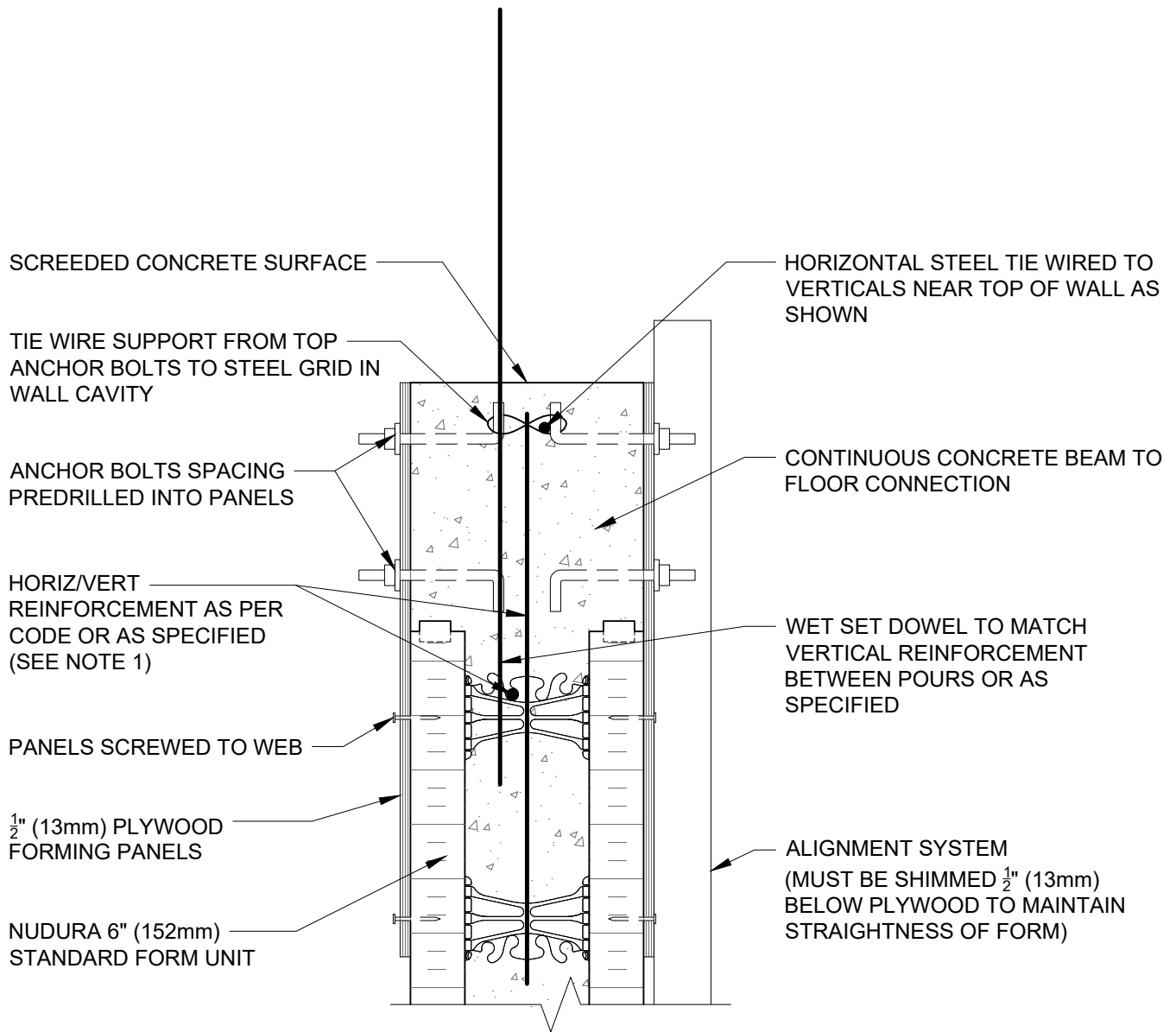
File Name:

FW6D1



Construction Products Group

www.tremcocpg.com





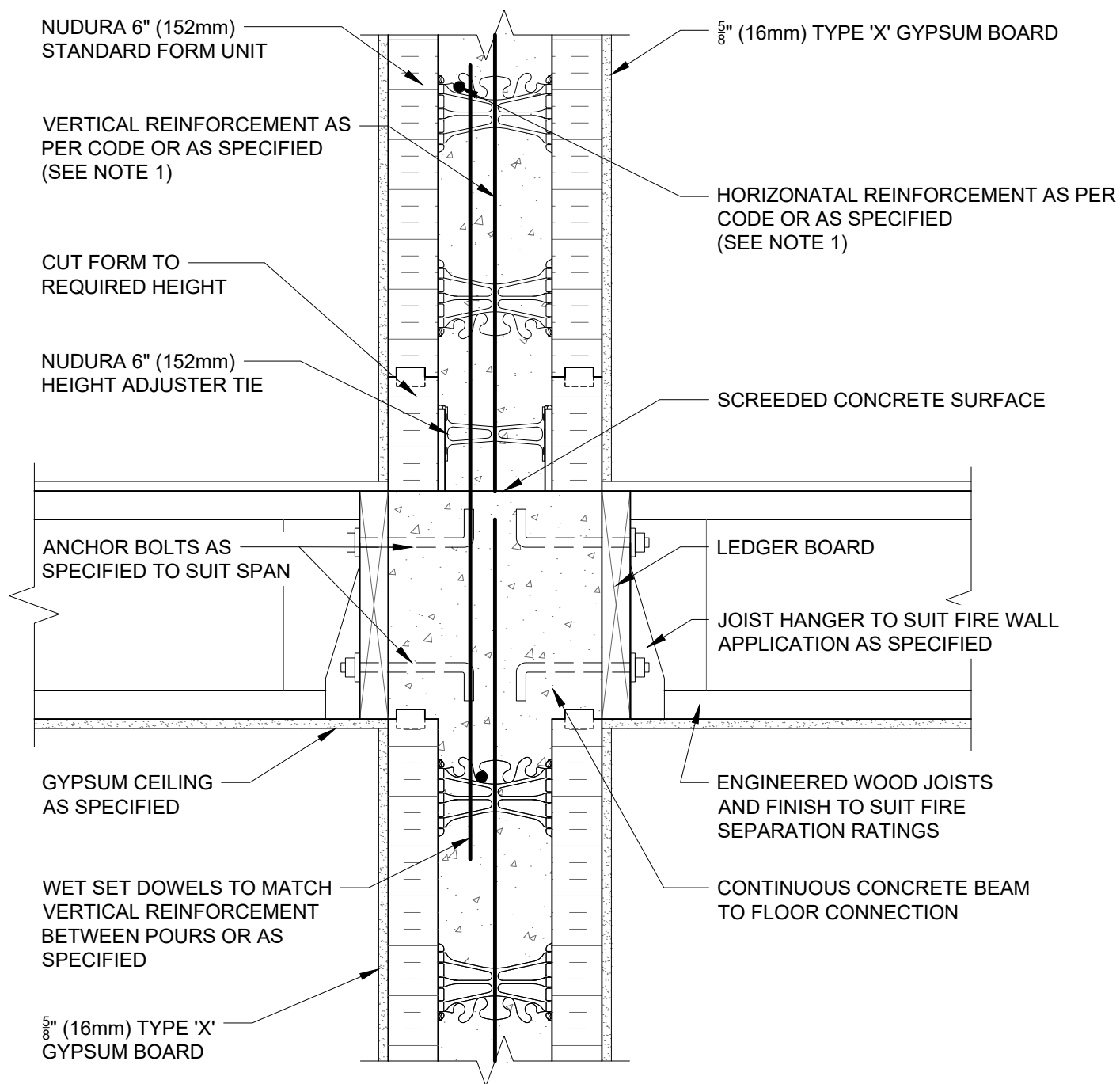
NOTES:

1) FOR OPTIMAL REINFORCEMENT PLACEMENT IN THE NUDURA FORM, SPACING OF HORIZONTAL REINFORCEMENT TO BE SPECIFIED AT 18" (457mm) O.C. AND VERTICAL REINFORCEMENT TO BE SPECIFIED AT MULTIPLES OF 8" (203mm) O.C. REFER TO NUDURA REINFORCEMENT PLACEMENT DETAILS.

This detail is for general informational purposes only. The project design professional determines, in its sole discretion, whether this detail or a functionally equivalent detail is best suited for the project with respect to any architecture, engineering, and design requirements, including any local building code requirements. If this document is not reviewed and the product is not approved for use by a licensed design professional, the customer agrees that the detail may contain substantive flaws requiring correction, and hereby releases Tremco CPG Inc. from any and all liability related to the design and installation of the product. This detail is subject to change without notice. Contact Tremco to ensure you have the most recent version.

Standard Form Unit Profiles

 Nudura Technical Support: 866-468-6299 International: +1 705-726-9499	Detail: Nudura 6" (152mm) Standard Form Unit STC/Fire Wall, Intermediate Floor Connection, Interim Construction Method			File Name: FW6D2A	 Construction Products Group
	Drawn by: TVC	Checked by: KS	Scale: 1:8		
	Revision #: 05	Revised by: KAB	Date: 10/15/2025		
	www.tremcocpg.com				



NOTES:

1) FOR OPTIMAL REINFORCEMENT PLACEMENT IN THE NUDURA FORM, SPACING OF HORIZONTAL REINFORCEMENT TO BE SPECIFIED AT 18" (457mm) O.C. AND VERTICAL REINFORCEMENT TO BE SPECIFIED AT MULTIPLES OF 8" (203mm) O.C. REFER TO NUDURA REINFORCEMENT PLACEMENT DETAILS.

This detail is for general informational purposes only. The project design professional determines, in its sole discretion, whether this detail or a functionally equivalent detail is best suited for the project with respect to any architecture, engineering, and design requirements, including any local building code requirements. If this document is not reviewed and the product is not approved for use by a licensed design professional, the customer agrees that the detail may contain substantive flaws requiring correction, and hereby releases Tremco CPG Inc. from any and all liability related to the design and installation of the product. This detail is subject to change without notice. Contact Tremco to ensure you have the most recent version.

Standard Form Unit Profiles



Detail: Nudura 6" (152mm) Standard Form Unit STC/Fire Wall, Intermediate Floor Connection, Completed Condition

Drawn by: TVC

Checked by: KS

Scale: 1:8

Revision #: 06

Revised by: KAB

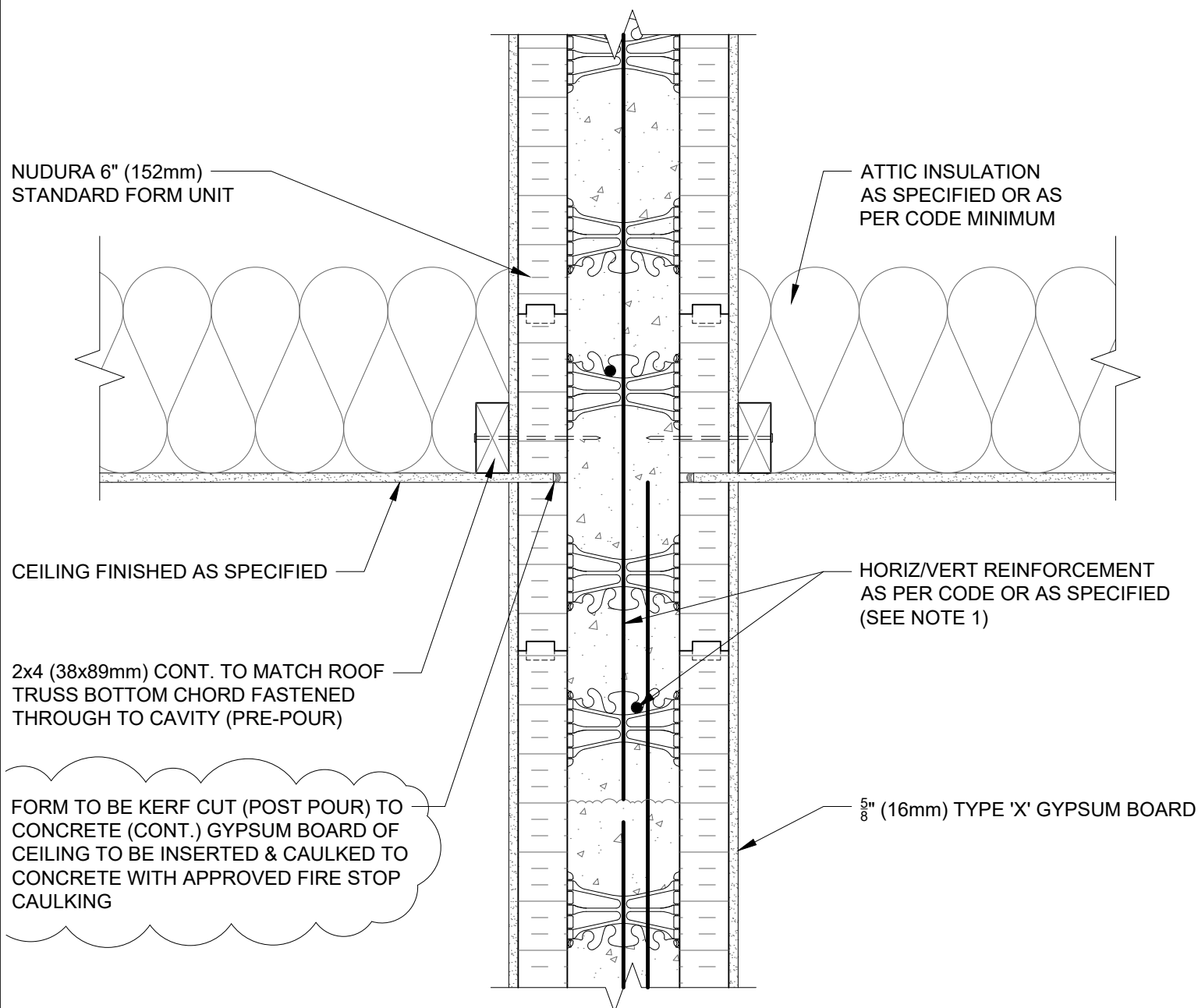
Date: 10/15/2025

www.tremcocpg.com

File Name:

FW6D2B





NOTES:

1) FOR OPTIMAL REINFORCEMENT PLACEMENT IN THE NUDURA FORM, SPACING OF HORIZONTAL REINFORCEMENT TO BE SPECIFIED AT 18" (457mm) O.C. AND VERTICAL REINFORCEMENT TO BE SPECIFIED AT MULTIPLES OF 8" (203mm) O.C. REFER TO NUDURA REINFORCEMENT PLACEMENT DETAILS.

This detail is for general informational purposes only. The project design professional determines, in its sole discretion, whether this detail or a functionally equivalent detail is best suited for the project with respect to any architecture, engineering, and design requirements, including any local building code requirements. If this document is not reviewed and the product is not approved for use by a licensed design professional, the customer agrees that the detail may contain substantive flaws requiring correction, and hereby releases Tremco CPG Inc. from any and all liability related to the design and installation of the product. This detail is subject to change without notice. Contact Tremco to ensure you have the most recent version.

Standard Form Unit Profiles



Nudura Technical Support: 866-468-6299
International: +1 705-726-9499

Detail: Nudura 6" (152mm) Standard Form Unit STC/Fire Wall, Ceiling Connection, Wood Trusses

Drawn by: TVC

Checked by: KS

Scale: 1:8

Revision #: 04

Revised by: KAB

Date: 10/15/2025

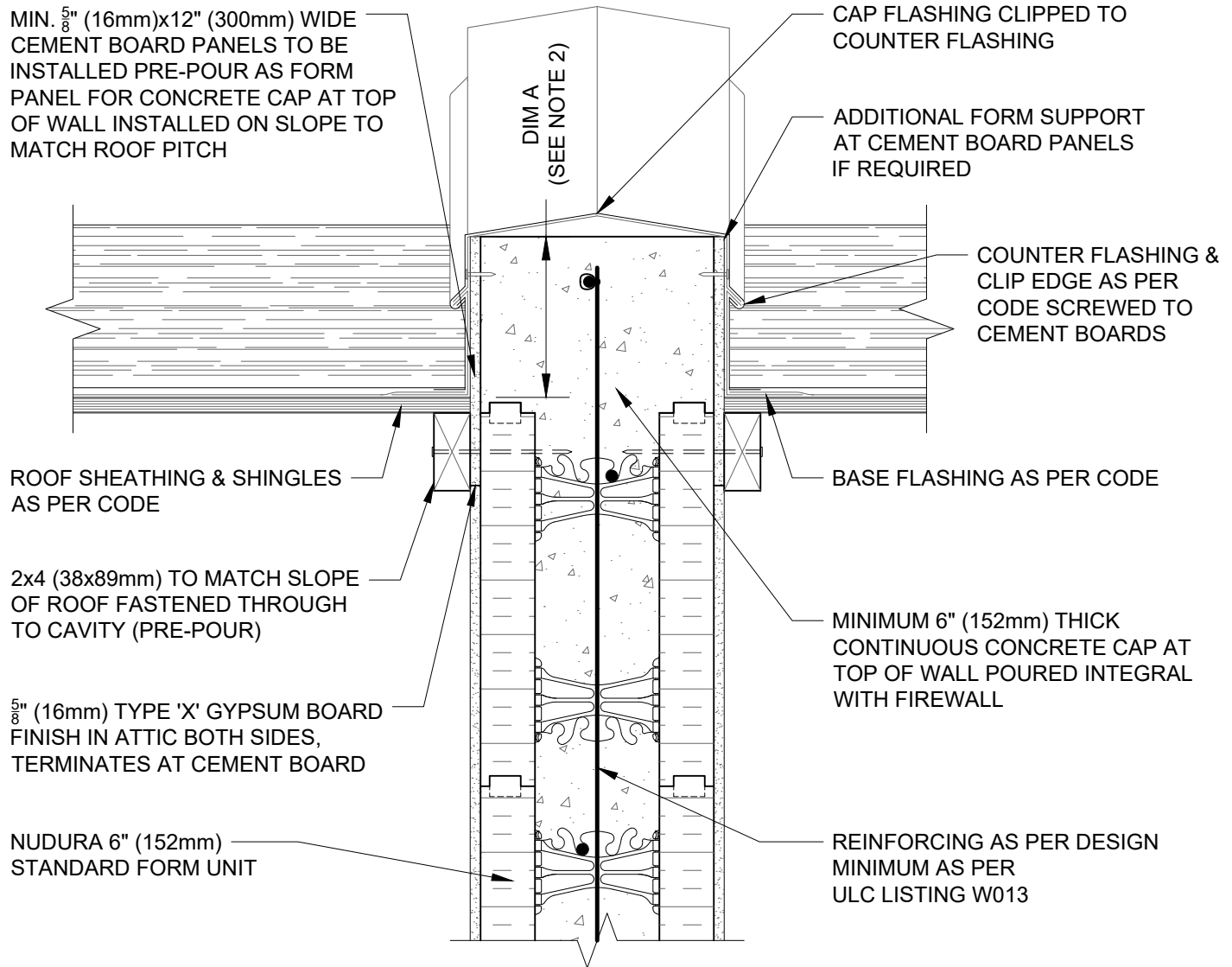
File Name:

FW6D3



Construction Products Group

www.tremcocpg.com



NOTES:

- 1) FOR OPTIMAL REINFORCEMENT PLACEMENT IN THE NUDURA FORM, SPACING OF HORIZONTAL REINFORCEMENT TO BE SPECIFIED AT 18" (457mm) O.C. AND VERTICAL REINFORCEMENT TO BE SPECIFIED AT MULTIPLES OF 8" (203mm) O.C. REFER TO NUDURA REINFORCEMENT PLACEMENT DETAILS.
- 2) DIMENSION 'A' MUST BE MINIMUM 6" (152mm) AS PER CODE FOR 2 HOUR FIREWALL (CANADIAN CODE)

This detail is for general informational purposes only. The project design professional determines, in its sole discretion, whether this detail or a functionally equivalent detail is best suited for the project with respect to any architecture, engineering, and design requirements, including any local building code requirements. If this document is not reviewed and the product is not approved for use by a licensed design professional, the customer agrees that the detail may contain substantive flaws requiring correction, and hereby releases Tremco CPG Inc. from any and all liability related to the design and installation of the product. This detail is subject to change without notice. Contact Tremco to ensure you have the most recent version.

Standard Form Unit Profiles

Detail: Nudura 6" (152mm) Standard Form Unit STC/Fire Wall, Firewall Projection Through Roof, 2 Hour Firewall (CAN)

Drawn by: TVC

Checked by: KS

Scale: 1:8

Revision #: 04

Revised by: KAB

Date: 10/15/2025

File Name:

FW6D4

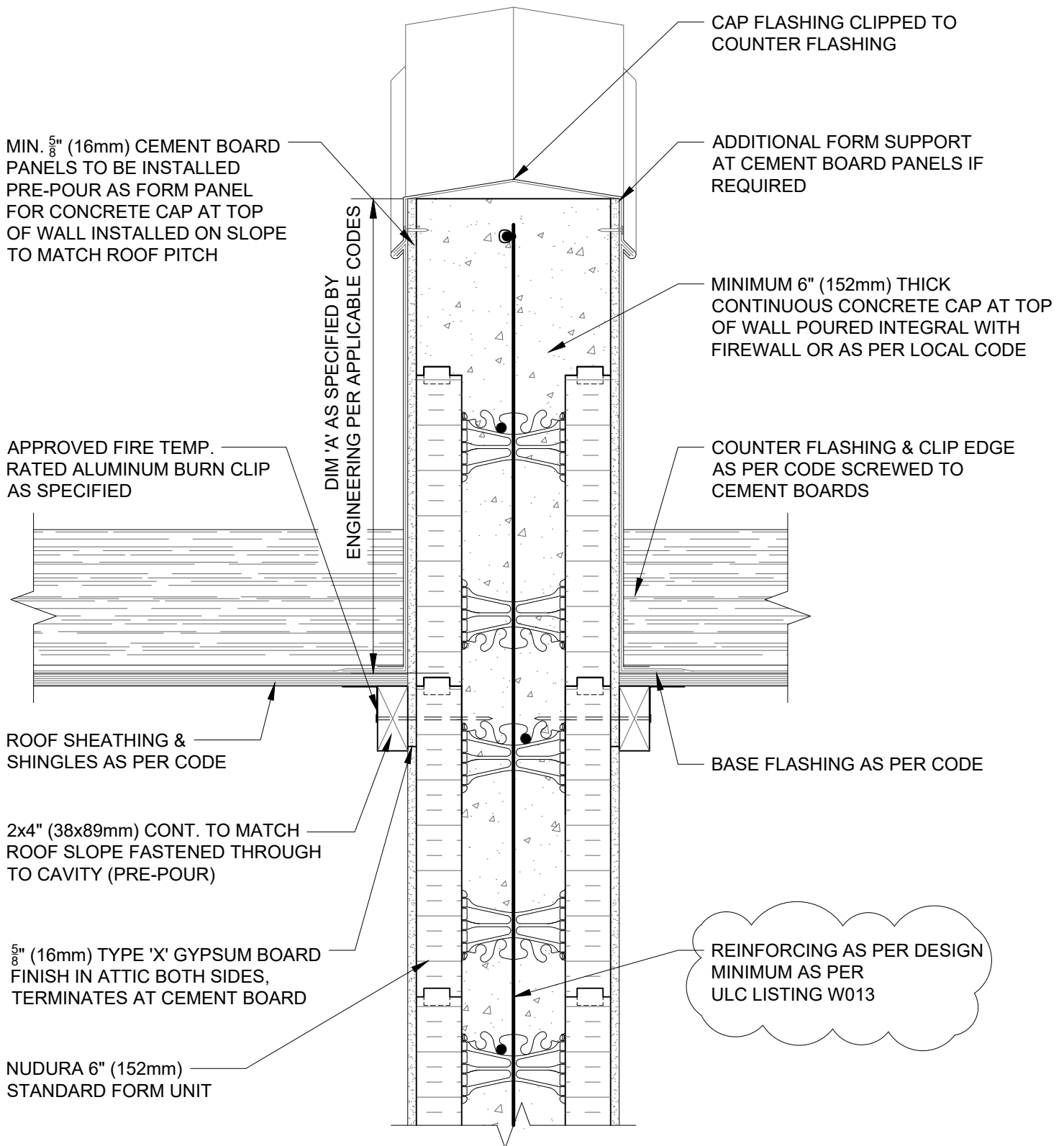


Nudura Technical Support: 866-468-6299
International: +1 705-726-9499

www.tremcocpg.com



Construction Products Group



NOTES:

1) FOR OPTIMAL REINFORCEMENT PLACEMENT IN THE NUDURA FORM, SPACING OF HORIZONTAL REINFORCEMENT TO BE SPECIFIED AT 18" (457mm) O.C. AND VERTICAL REINFORCEMENT TO BE SPECIFIED AT MULTIPLES OF 8" (203mm) O.C. REFER TO NUDURA REINFORCEMENT PLACEMENT DETAILS.

This detail is for general informational purposes only. The project design professional determines, in its sole discretion, whether this detail or a functionally equivalent detail is best suited for the project with respect to any architecture, engineering, and design requirements, including any local building code requirements. If this document is not reviewed and the product is not approved for use by a licensed design professional, the customer agrees that the detail may contain substantive flaws requiring correction, and hereby releases Tremco CPG Inc. from any and all liability related to the design and installation of the product. This detail is subject to change without notice. Contact Tremco to ensure you have the most recent version.

Standard Form Unit Profiles

Detail: Nudura 6" (152mm) Standard Form Unit STC/Fire Wall, Firewall Projection Through Roof, 2 or 4 Hour Firewall

Drawn by: TVC

Checked by: KS

Scale: 1:8

Revision #: 03

Revised by: KAB

Date: 10/15/2025

File Name:

FW6D5

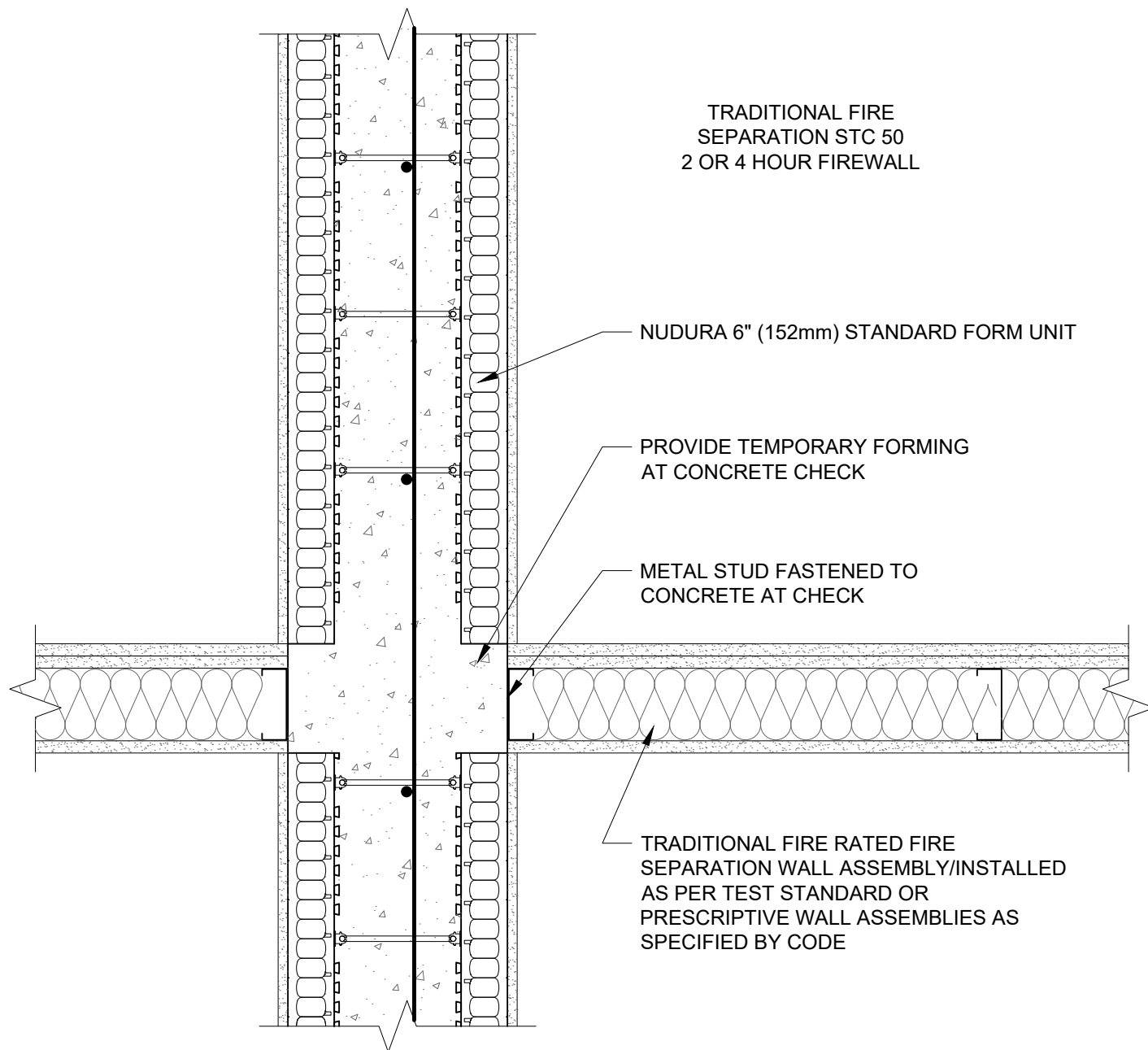


Nudura Technical Support: 866-468-6299
International: +1 705-726-9499

www.tremcocpg.com



Construction Products Group



NOTES:

1) FOR OPTIMAL REINFORCEMENT PLACEMENT IN THE NUDURA FORM, SPACING OF HORIZONTAL REINFORCEMENT TO BE SPECIFIED AT 18" (457mm) O.C. AND VERTICAL REINFORCEMENT TO BE SPECIFIED AT MULTIPLES OF 8" (203mm) O.C. REFER TO NUDURA REINFORCEMENT PLACEMENT DETAILS.

This detail is for general informational purposes only. The project design professional determines, in its sole discretion, whether this detail or a functionally equivalent detail is best suited for the project with respect to any architecture, engineering, and design requirements, including any local building code requirements. If this document is not reviewed and the product is not approved for use by a licensed design professional, the customer agrees that the detail may contain substantive flaws requiring correction, and hereby releases Tremco CPG Inc. from any and all liability related to the design and installation of the product. This detail is subject to change without notice. Contact Tremco to ensure you have the most recent version.

Standard Form Unit Profiles



Detail: Nudura 6" (152mm) Standard Form Unit STC/Fire Wall, Traditional Fire Separation, Plan View at 2 or 4 Hour Firewall

Drawn by: TVC

Checked by: KS

Scale: 1:8

Revision #: 02

Revised by: KAB

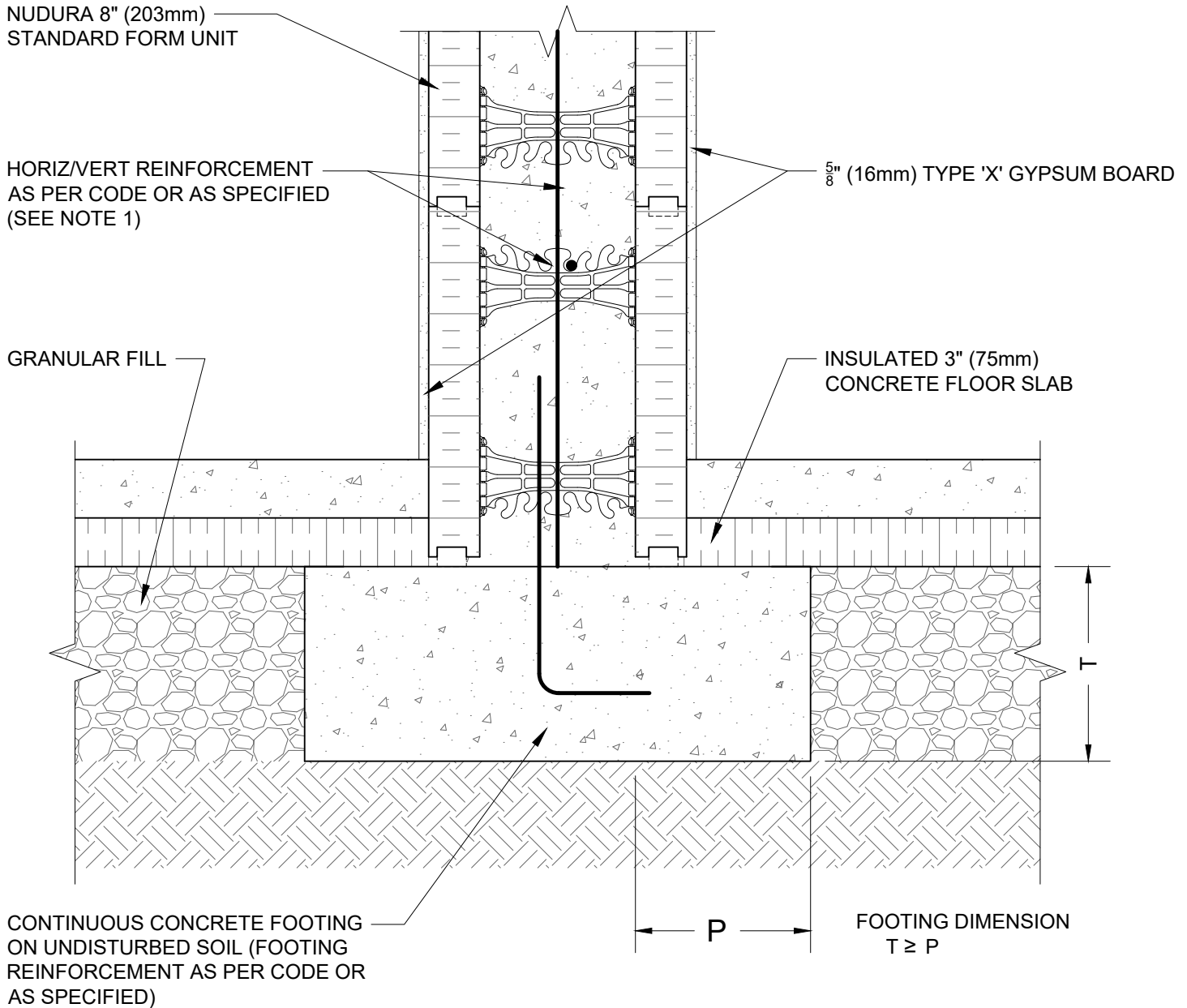
Date: 10/15/2025

File Name:

FW6D6



www.tremcocpg.com



NOTES:

1) FOR OPTIMAL REINFORCEMENT PLACEMENT IN THE NUDURA FORM, SPACING OF HORIZONTAL REINFORCEMENT TO BE SPECIFIED AT 18" (457mm) O.C. AND VERTICAL REINFORCEMENT TO BE SPECIFIED AT MULTIPLES OF 8" (203mm) O.C. REFER TO NUDURA REINFORCEMENT PLACEMENT DETAILS.

This detail is for general informational purposes only. The project design professional determines, in its sole discretion, whether this detail or a functionally equivalent detail is best suited for the project with respect to any architecture, engineering, and design requirements, including any local building code requirements. If this document is not reviewed and the product is not approved for use by a licensed design professional, the customer agrees that the detail may contain substantive flaws requiring correction, and hereby releases Tremco CPG Inc. from any and all liability related to the design and installation of the product. This detail is subject to change without notice. Contact Tremco to ensure you have the most recent version.

Standard Form Unit Profiles



Nudura Technical Support: 866-468-6299
International: +1 705-726-9499

Detail: Nudura 8" (203mm) Standard Form Unit STC/Fire Wall, Insulated Slab

Drawn by: TVC

Checked by: KS

Scale: 1:8

Revision #: 04

Revised by: KAB

Date: 10/15/2025

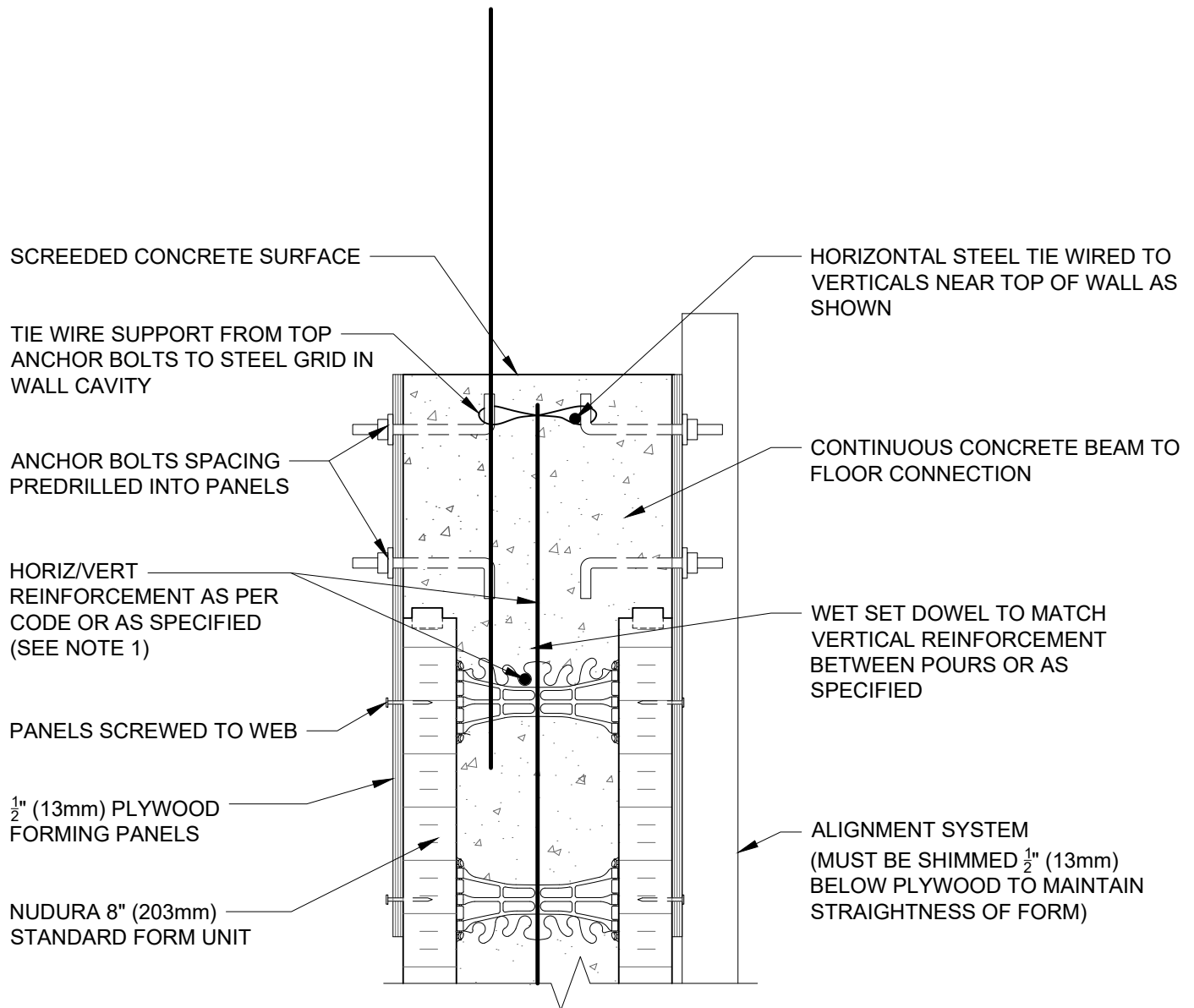
File Name:

FW8D1



Construction Products Group

www.tremcocpg.com





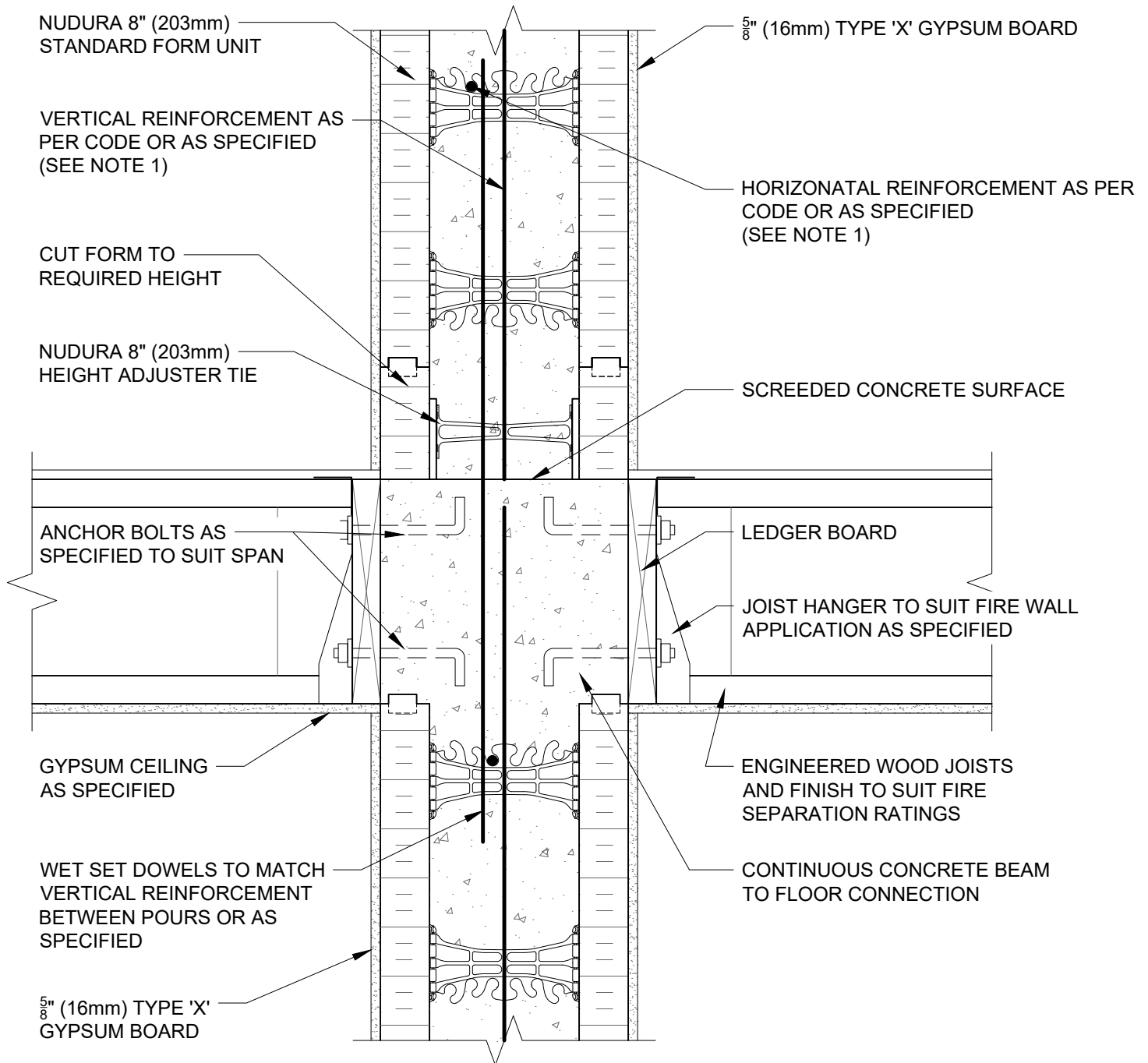
NOTES:

1) FOR OPTIMAL REINFORCEMENT PLACEMENT IN THE NUDURA FORM, SPACING OF HORIZONTAL REINFORCEMENT TO BE SPECIFIED AT 18" (457mm) O.C. AND VERTICAL REINFORCEMENT TO BE SPECIFIED AT MULTIPLES OF 8" (203mm) O.C. REFER TO NUDURA REINFORCEMENT PLACEMENT DETAILS.

This detail is for general informational purposes only. The project design professional determines, in its sole discretion, whether this detail or a functionally equivalent detail is best suited for the project with respect to any architecture, engineering, and design requirements, including any local building code requirements. If this document is not reviewed and the product is not approved for use by a licensed design professional, the customer agrees that the detail may contain substantive flaws requiring correction, and hereby releases Tremco CPG Inc. from any and all liability related to the design and installation of the product. This detail is subject to change without notice. Contact Tremco to ensure you have the most recent version.

Standard Form Unit Profiles

 Nudura Technical Support: 866-468-6299 International: +1 705-726-9499	Detail: Nudura 8" (203mm) Standard Form Unit STC/Fire Wall, Intermediate Floor Connection, Interim Construction Method			File Name: FW8D2A	 Construction Products Group
	Drawn by: TVC	Checked by: KS	Scale: 1:8		
	Revision #: 02	Revised by: KAB	Date: 10/15/2025		
	www.tremcocpg.com				



NOTES:

1) FOR OPTIMAL REINFORCEMENT PLACEMENT IN THE NUDURA FORM, SPACING OF HORIZONTAL REINFORCEMENT TO BE SPECIFIED AT 18" (457mm) O.C. AND VERTICAL REINFORCEMENT TO BE SPECIFIED AT MULTIPLES OF 8" (203mm) O.C. REFER TO NUDURA REINFORCEMENT PLACEMENT DETAILS.

This detail is for general informational purposes only. The project design professional determines, in its sole discretion, whether this detail or a functionally equivalent detail is best suited for the project with respect to any architecture, engineering, and design requirements, including any local building code requirements. If this document is not reviewed and the product is not approved for use by a licensed design professional, the customer agrees that the detail may contain substantive flaws requiring correction, and hereby releases Tremco CPG Inc. from any and all liability related to the design and installation of the product. This detail is subject to change without notice. Contact Tremco to ensure you have the most recent version.

Standard Form Unit Profiles

Detail: Nudura 8" (203mm) Standard Form Unit STC/Fire Wall, Intermediate Floor Connection, Completed Condition

File Name:

Drawn by: TVC

Checked by: KS

Scale: 1:8

FW8D2B

Revision #: 02

Revised by: KAB

Date: 10/15/2025

www.tremcocpg.com



Nudura Technical Support: 866-468-6299
International: +1 705-726-9499



Construction Products Group

NUDURA 8" (203mm)
STANDARD FORM UNIT

ATTIC INSULATION
AS SPECIFIED OR AS
PER CODE MINIMUM

CEILING FINISHED AS SPECIFIED

2x4 (38x89mm) CONT. TO MATCH ROOF
TRUSS BOTTOM CHORD FASTENED
THROUGH TO CAVITY (PRE-POUR)

HORIZ/VERT REINFORCEMENT
AS PER CODE OR AS SPECIFIED
(SEE NOTE 1)

FORM TO BE KERF CUT (POST POUR) TO
CONCRETE (CONT.) GYPSUM BOARD OF
CEILING TO BE INSERTED & CAULKED TO
CONCRETE WITH APPROVED FIRE STOP
CAULKING

5" (16mm) TYPE 'X'
GYPSUM BOARD

NOTES:

1) FOR OPTIMAL REINFORCEMENT PLACEMENT IN THE NUDURA FORM, SPACING OF HORIZONTAL REINFORCEMENT TO BE SPECIFIED AT 18" (457mm) O.C. AND VERTICAL REINFORCEMENT TO BE SPECIFIED AT MULTIPLES OF 8" (203mm) O.C. REFER TO NUDURA REINFORCEMENT PLACEMENT DETAILS.

This detail is for general informational purposes only. The project design professional determines, in its sole discretion, whether this detail or a functionally equivalent detail is best suited for the project with respect to any architecture, engineering, and design requirements, including any local building code requirements. If this document is not reviewed and the product is not approved for use by a licensed design professional, the customer agrees that the detail may contain substantive flaws requiring correction, and hereby releases Tremco CPG Inc. from any and all liability related to the design and installation of the product. This detail is subject to change without notice. Contact Tremco to ensure you have the most recent version.

Standard Form Unit Profiles



Nudura Technical Support: 866-468-6299
International: +1 705-726-9499

Detail: Nudura 8" (203mm) Standard Form Unit STC/Fire Wall, Ceiling Connection,
Wood Trusses

Drawn by: TVC

Checked by: KS

Scale: 1:8

Revision #: 02

Revised by: KAB

Date: 10/15/2025

File Name:

FW8D3



Construction Products Group

www.tremcocpg.com

MIN. $\frac{5}{8}$ " (16mm)x12" (300mm) WIDE
CEMENT BOARD PANELS TO BE
INSTALLED PRE-POUR AS FORM
PANEL FOR CONCRETE CAP AT TOP
OF WALL INSTALLED ON SLOPE TO
MATCH ROOF PITCH

CAP FLASHING CLIPPED TO
COUNTER FLASHING

ADDITIONAL FORM SUPPORT
AT CEMENT BOARD PANELS
IF REQUIRED

COUNTER FLASHING &
CLIP EDGE AS PER
CODE SCREWED TO
CEMENT BOARDS

ROOF SHEATHING & SHINGLES
AS PER CODE

BASE FLASHING AS PER CODE

2x4 (38x89mm) TO MATCH SLOPE
OF ROOF FASTENED THROUGH
TO CAVITY (PRE-POUR)

MINIMUM 6" (152mm) THICK
CONTINUOUS CONCRETE CAP AT
TOP OF WALL POURED INTEGRAL
WITH FIREWALL

$\frac{5}{8}$ " (16mm) TYPE 'X' GYPSUM BOARD
FINISH IN ATTIC BOTH SIDES,
TERMINATES AT CEMENT BOARD

NUDURA 8" (203mm)
STANDARD FORM UNIT

REINFORCING AS PER DESIGN
MINIMUM AS PER
ULC LISTING W013

NOTES:

- FOR OPTIMAL REINFORCEMENT PLACEMENT IN THE NUDURA FORM, SPACING OF HORIZONTAL REINFORCEMENT TO BE SPECIFIED AT 18" (457mm) O.C. AND VERTICAL REINFORCEMENT TO BE SPECIFIED AT MULTIPLES OF 8" (203mm) O.C. REFER TO NUDURA REINFORCEMENT PLACEMENT DETAILS.
- DIMENSION 'A' MUST BE MINIMUM 6" (152mm) AS PER CODE FOR 2 HOUR FIREWALL (CANADIAN CODE)

This detail is for general informational purposes only. The project design professional determines, in its sole discretion, whether this detail or a functionally equivalent detail is best suited for the project with respect to any architecture, engineering, and design requirements, including any local building code requirements. If this document is not reviewed and the product is not approved for use by a licensed design professional, the customer agrees that the detail may contain substantive flaws requiring correction, and hereby releases Tremco CPG Inc. from any and all liability related to the design and installation of the product. This detail is subject to change without notice. Contact Tremco to ensure you have the most recent version.

Standard Form Unit Profiles

Detail: Nudura 8" (203mm) Standard Form Unit STC/Fire Wall, Firewall Projection
Through Roof, 2 Hour Firewall (CAN)

File Name:

Drawn by: TVC

Checked by: KS

Scale: 1:8

FW8D4

Revision #: 02

Revised by: KAB

Date: 10/15/2025

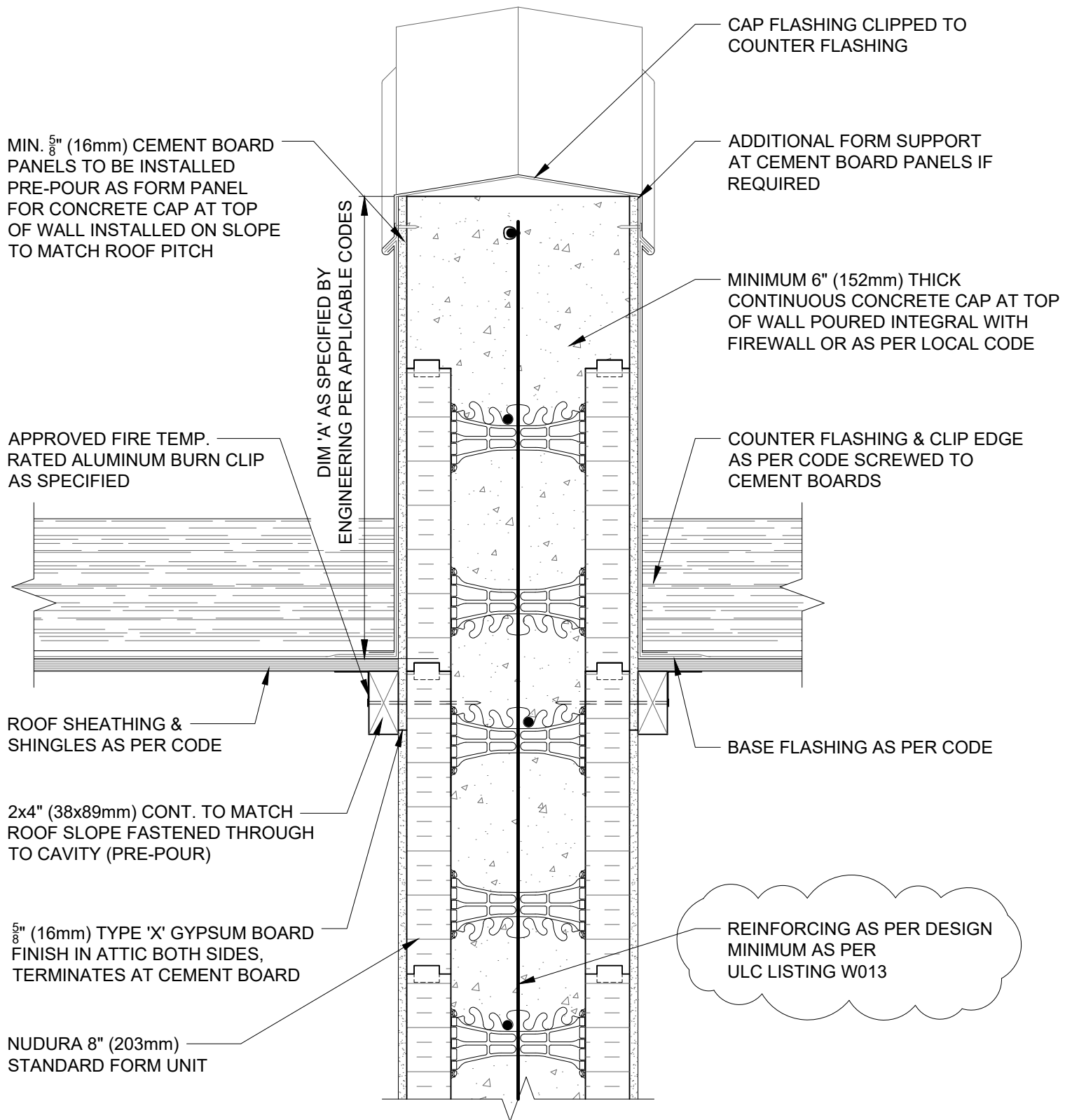
www.tremcocpg.com



Nudura Technical Support: 866-468-6299
International: +1 705-726-9499



Construction Products Group



NOTES:

1) FOR OPTIMAL REINFORCEMENT PLACEMENT IN THE NUDURA FORM, SPACING OF HORIZONTAL REINFORCEMENT TO BE SPECIFIED AT 18" (457mm) O.C. AND VERTICAL REINFORCEMENT TO BE SPECIFIED AT MULTIPLES OF 8" (203mm) O.C. REFER TO NUDURA REINFORCEMENT PLACEMENT DETAILS.

This detail is for general informational purposes only. The project design professional determines, in its sole discretion, whether this detail or a functionally equivalent detail is best suited for the project with respect to any architecture, engineering, and design requirements, including any local building code requirements. If this document is not reviewed and the product is not approved for use by a licensed design professional, the customer agrees that the detail may contain substantive flaws requiring correction, and hereby releases Tremco CPG Inc. from any and all liability related to the design and installation of the product. This detail is subject to change without notice. Contact Tremco to ensure you have the most recent version.

Standard Form Unit Profiles

Detail: Nudura 8" (203mm) Standard Form Unit STC/Fire Wall, Firewall Projection Through Roof, 2 or 4 Hour Firewall

Drawn by: TVC

Checked by: KS

Scale: 1:8

Revision #: 02

Revised by: KAB

Date: 10/15/2025

File Name:

FW8D5

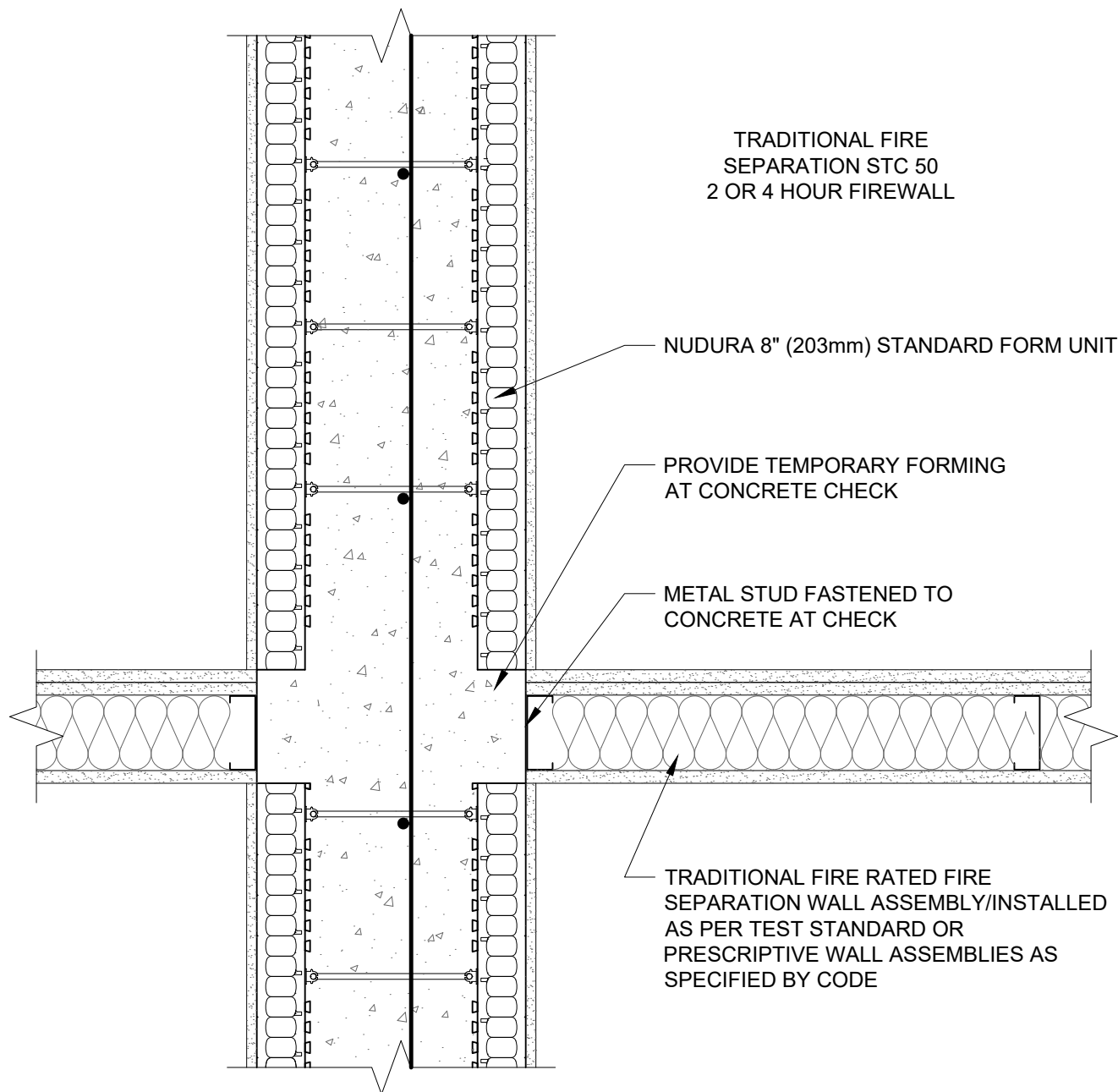


Nudura Technical Support: 866-468-6299
International: +1 705-726-9499

www.tremcocpg.com



Construction Products Group



NOTES:

1) FOR OPTIMAL REINFORCEMENT PLACEMENT IN THE NUDURA FORM, SPACING OF HORIZONTAL REINFORCEMENT TO BE SPECIFIED AT 18" (457mm) O.C. AND VERTICAL REINFORCEMENT TO BE SPECIFIED AT MULTIPLES OF 8" (203mm) O.C. REFER TO NUDURA REINFORCEMENT PLACEMENT DETAILS.

This detail is for general informational purposes only. The project design professional determines, in its sole discretion, whether this detail or a functionally equivalent detail is best suited for the project with respect to any architecture, engineering, and design requirements, including any local building code requirements. If this document is not reviewed and the product is not approved for use by a licensed design professional, the customer agrees that the detail may contain substantive flaws requiring correction, and hereby releases Tremco CPG Inc. from any and all liability related to the design and installation of the product. This detail is subject to change without notice. Contact Tremco to ensure you have the most recent version.

Standard Form Unit Profiles