

NOTES:
 1) FOR OPTIMAL REINFORCEMENT PLACEMENT IN THE NUDURA FORM, SPACING OF HORIZONTAL REINFORCEMENT TO BE SPECIFIED AT 18" (457mm) O.C. AND VERTICAL REINFORCEMENT TO BE SPECIFIED AT MULTIPLES OF 8" (203mm) O.C. REFER TO NUDURA REINFORCEMENT PLACEMENT DETAILS.

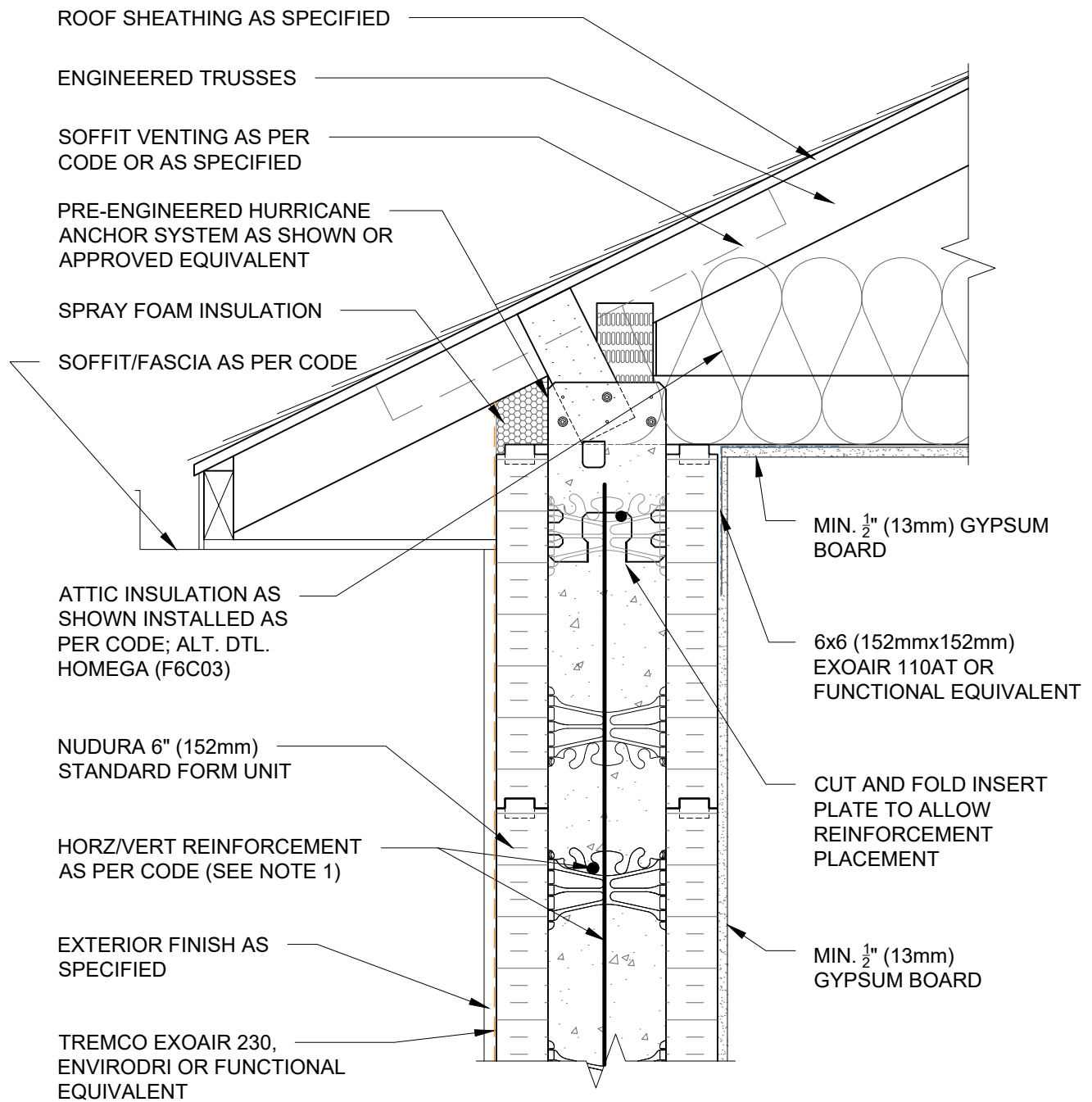
This detail is for general informational purposes only. The project design professional determines, in its sole discretion, whether this detail or a functionally equivalent detail is best suited for the project with respect to any architecture, engineering, and design requirements, including any local building code requirements. If this document is not reviewed and the product is not approved for use by a licensed design professional, the customer agrees that the detail may contain substantive flaws requiring correction, and hereby releases Tremco CPG Inc. from any and all liability related to the design and installation of the product. This detail is subject to change without notice. Contact Tremco to ensure you have the most recent version.

Combustible Construction - Roof



Detail: Nudura 6" (152mm) Form Unit, Insulated Roof, Brick Veneer Finish, Roof Rafters			File Name:
Drawn by: JN	Checked by: KS	Scale: 1:8	F6B02
Revision #: 08	Revised by: KAB	Date: 3/13/2024	





NOTES:
 1) FOR OPTIMAL REINFORCEMENT PLACEMENT IN THE NUDURA FORM, SPACING OF HORIZONTAL REINFORCEMENT TO BE SPECIFIED AT 18" (457mm) O.C. AND VERTICAL REINFORCEMENT TO BE SPECIFIED AT MULTIPLES OF 8" (203mm) O.C. REFER TO NUDURA REINFORCEMENT PLACEMENT DETAILS.

This detail is for general informational purposes only. The project design professional determines, in its sole discretion, whether this detail or a functionally equivalent detail is best suited for the project with respect to any architecture, engineering, and design requirements, including any local building code requirements. If this document is not reviewed and the product is not approved for use by a licensed design professional, the customer agrees that the detail may contain substantive flaws requiring correction, and hereby releases Tremco CPG Inc. from any and all liability related to the design and installation of the product. This detail is subject to change without notice. Contact Tremco to ensure you have the most recent version.

Combustible Construction - Roof

 Nudura Technical Support: 866-468-6299 International: +1 705-726-9499	Detail: Nudura 6" (152mm) Form Unit, Multi-Purpose Hanger, Standard Batt Insulation, Exterior Finish as Specified, Roof Trusses			File Name:	 Construction Products Group
	Drawn by: KS	Checked by: KS	Scale: 1:8	F6B03	
	Revision #: 07	Revised by: KAB	Date: 3/13/2024		
www.tremcocpg.com					

GABLE END TRUSS INSTALLED TO ALLOW SHEATHING TO BE INSTALLED FLUSH TO FACE OF NUDURA FORM UNITS

BRICK VENEER c/w 1" (25mm) AIR SPACE AND BRICK TIES

2x4" (38x89mm) CROSS BLOCKING BETWEEN GABLE END AND FIRST TRUSS AT 24" (600mm) o.c. OR AS PER CODE. BLOCKING TOE NAILED OR BRACKET ANCHORED TO SILL PLATE AS SPECIFIED

ENGINEERED FRAMING SYSTEM BY PREBUCK LLC OR FUNCTIONAL EQUIVALENT; ANCHORAGE AS PER CODE OR SPECIFIED

TREMCO EXOAIR 230, ENVIRODRI OR FUNCTIONAL EQUIVALENT

HORIZ/VERT REINFORCEMENT AS PER CODE OR AS SPECIFIED

CROSS BRIDGING AT FIRST TRUSSES AS MANUFACTURERS INSTALLATION REQUIREMENTS

STANDARD ATTIC INSULATION (AS SHOWN) OR 2 LAYERS OF HOMOGENEOUS INSULATION AS PER CODE

MIN. 1/2" (13mm) GYPSUM BOARD

6x6 (152mmx152mm) EXOAIR 110AT OR FUNCTIONAL EQUIVALENT

2x4" (38x89mm) BOTTOM CHORD OF GABLE END TRUSS END NAILED INTO CROSS BLOCKING

NUDURA 6" (152mm) STANDARD FORM UNIT

NOTES:
1) FOR OPTIMAL REINFORCEMENT PLACEMENT IN THE NUDURA FORM, SPACING OF HORIZONTAL REINFORCEMENT TO BE SPECIFIED AT 18" (457mm) O.C. AND VERTICAL REINFORCEMENT TO BE SPECIFIED AT MULTIPLES OF 8" (203mm) O.C. REFER TO NUDURA REINFORCEMENT PLACEMENT DETAILS.

This detail is for general informational purposes only. The project design professional determines, in its sole discretion, whether this detail or a functionally equivalent detail is best suited for the project with respect to any architecture, engineering, and design requirements, including any local building code requirements. If this document is not reviewed and the product is not approved for use by a licensed design professional, the customer agrees that the detail may contain substantive flaws requiring correction, and hereby releases Tremco CPG Inc. from any and all liability related to the design and installation of the product. This detail is subject to change without notice. Contact Tremco to ensure you have the most recent version.

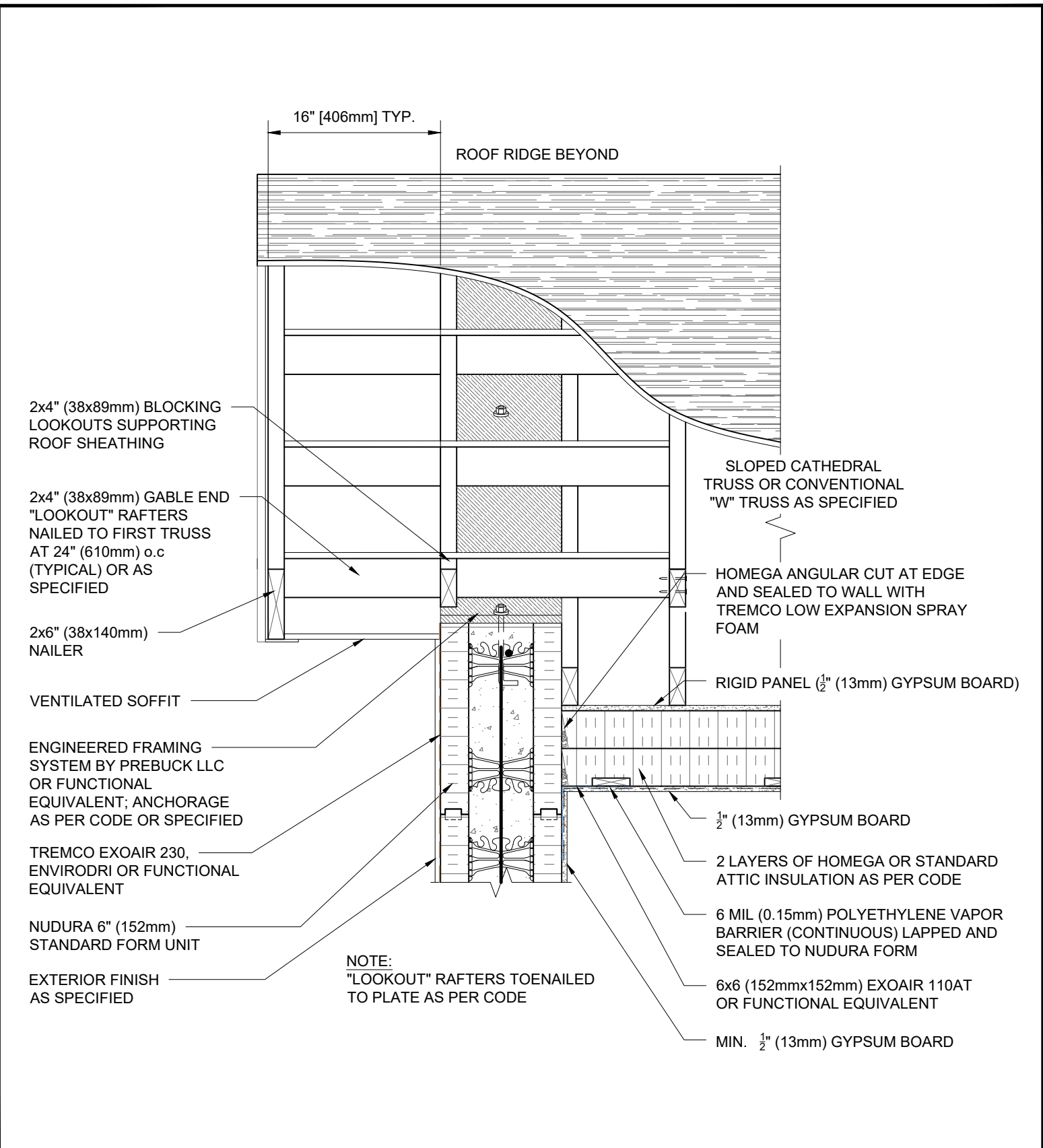
Combustible Construction - Roof



Detail: Nudura 6" (152mm) Form Unit, Gable End Detail, Trusses Parallel to Wall		
Drawn by: JN	Checked by: KS	Scale: 1:8
Revision #: 05	Revised by: KAB	Date: 3/13/2024

File Name:
F6B06





NOTES:
1) FOR OPTIMAL REINFORCEMENT PLACEMENT IN THE NUDURA FORM, SPACING OF HORIZONTAL REINFORCEMENT TO BE SPECIFIED AT 18" (457mm) O.C. AND VERTICAL REINFORCEMENT TO BE SPECIFIED AT MULTIPLES OF 8" (203mm) O.C. REFER TO NUDURA REINFORCEMENT PLACEMENT DETAILS.

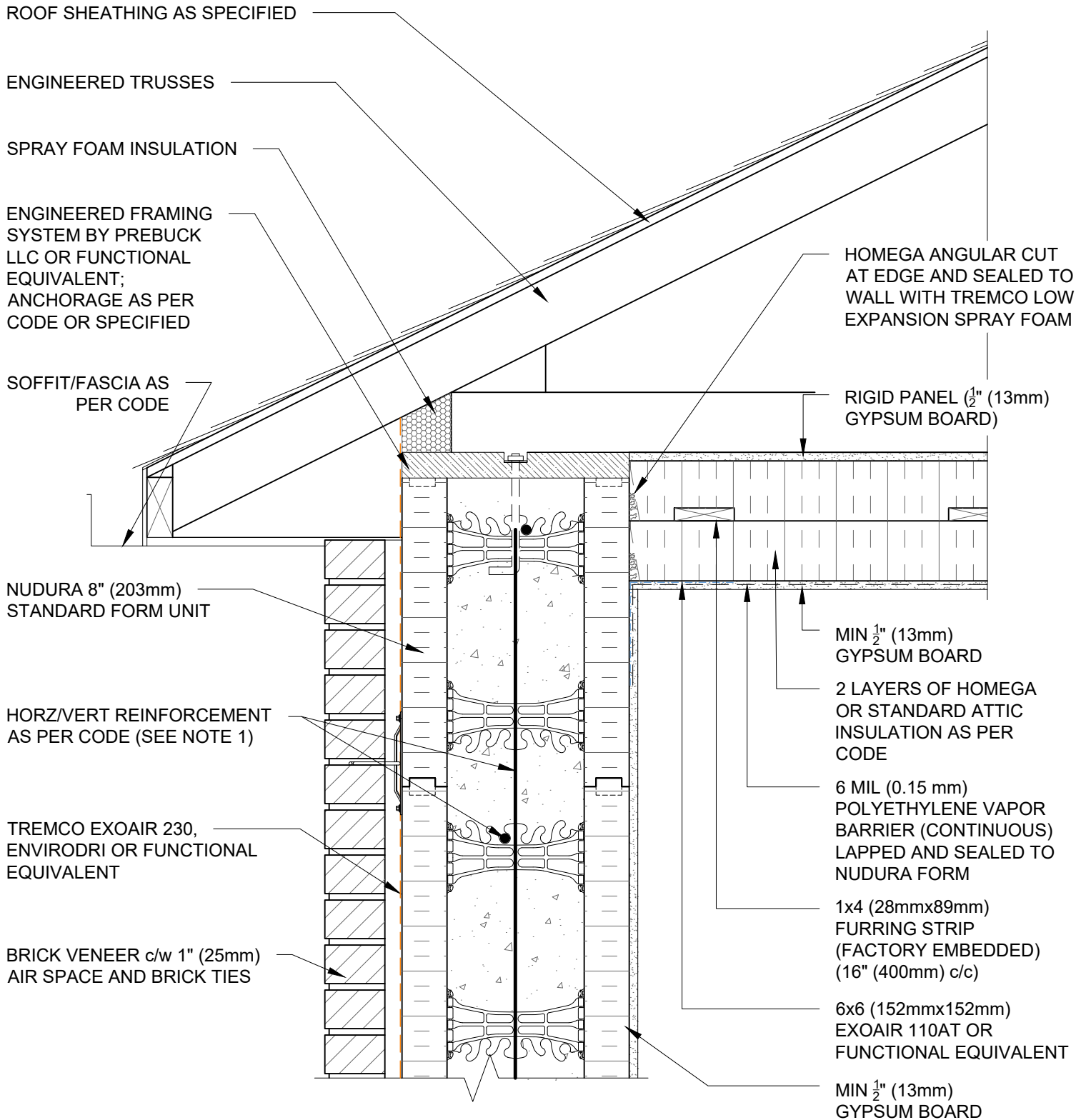
This detail is for general informational purposes only. The project design professional determines, in its sole discretion, whether this detail or a functionally equivalent detail is best suited for the project with respect to any architecture, engineering, and design requirements, including any local building code requirements. If this document is not reviewed and the product is not approved for use by a licensed design professional, the customer agrees that the detail may contain substantive flaws requiring correction, and hereby releases Tremco CPG Inc. from any and all liability related to the design and installation of the product. This detail is subject to change without notice. Contact Tremco to ensure you have the most recent version.

Combustible Construction - Roof



Detail: Nudura 6" (152mm) Form Unit, Gable End Section, Exterior Finish as Specified			File Name:
Drawn by: KS	Checked by: KS	Scale: 1:10	F6B07
Revision #: 07	Revised by: KAB	Date: 3/13/2024	





NOTES:
 1) FOR OPTIMAL REINFORCEMENT PLACEMENT IN THE NUDURA FORM, SPACING OF HORIZONTAL REINFORCEMENT TO BE SPECIFIED AT 18" (457mm) O.C. AND VERTICAL REINFORCEMENT TO BE SPECIFIED AT MULTIPLES OF 8" (203mm) O.C. REFER TO NUDURA REINFORCEMENT PLACEMENT DETAILS.

This detail is for general informational purposes only. The project design professional determines, in its sole discretion, whether this detail or a functionally equivalent detail is best suited for the project with respect to any architecture, engineering, and design requirements, including any local building code requirements. If this document is not reviewed and the product is not approved for use by a licensed design professional, the customer agrees that the detail may contain substantive flaws requiring correction, and hereby releases Tremco CPG Inc. from any and all liability related to the design and installation of the product. This detail is subject to change without notice. Contact Tremco to ensure you have the most recent version.

Combustible Construction - Roof



Detail: Nudura 8" (203mm) Form Unit, Insulated Roof, Brick Veneer Finish		
Drawn by: TVC	Checked by: KS	Scale: 1:8
Revision #: 05	Revised by: KAB	Date: 3/13/2024

File Name:
F8B01



GABLE END TRUSS INSTALLED TO ALLOW SHEATHING TO BE INSTALLED FLUSH TO FACE OF NUDURA FORM UNITS

BRICK VENEER c/w 1" (25mm) AIR SPACE AND BRICK TIES

2x4" (38x89mm) CROSS BLOCKING BETWEEN GABLE END AND FIRST TRUSS AT 24" (600mm) o.c. OR AS PER CODE. BLOCKING TOE NAILED OR BRACKET ANCHORED TO SILL PLATE AS SPECIFIED

ENGINEERED FRAMING SYSTEM BY PREBUCK LLC OR FUNCTIONAL EQUIVALENT; ANCHORAGE AS PER CODE OR SPECIFIED

TREMCO EXOAIR 230, ENVIRODRI OR FUNCTIONAL EQUIVALENT

HORIZ/VERT REINFORCEMENT AS PER CODE OR AS SPECIFIED

CROSS BRIDGING AT FIRST TRUSSES AS MANUFACTURERS INSTALLATION REQUIREMENTS

STANDARD ATTIC INSULATION (AS SHOWN) OR 2 LAYERS OF HOMEGA AS PER CODE

MIN. 1/2" (13mm) GYPSUM BOARD

6x6 (152mmx152mm) EXOAIR 110AT OR FUNCTIONAL EQUIVALENT

2x4" (38x89mm) BOTTOM CHORD OF GABLE END TRUSS END NAILED INTO CROSS BLOCKING

NUDURA 8" (203mm) STANDARD FORM UNIT

NOTES:
 1) FOR OPTIMAL REINFORCEMENT PLACEMENT IN THE NUDURA FORM, SPACING OF HORIZONTAL REINFORCEMENT TO BE SPECIFIED AT 18" (457mm) O.C. AND VERTICAL REINFORCEMENT TO BE SPECIFIED AT MULTIPLES OF 8" (203mm) O.C. REFER TO NUDURA REINFORCEMENT PLACEMENT DETAILS.

This detail is for general informational purposes only. The project design professional determines, in its sole discretion, whether this detail or a functionally equivalent detail is best suited for the project with respect to any architecture, engineering, and design requirements, including any local building code requirements. If this document is not reviewed and the product is not approved for use by a licensed design professional, the customer agrees that the detail may contain substantive flaws requiring correction, and hereby releases Tremco CPG Inc. from any and all liability related to the design and installation of the product. This detail is subject to change without notice. Contact Tremco to ensure you have the most recent version.

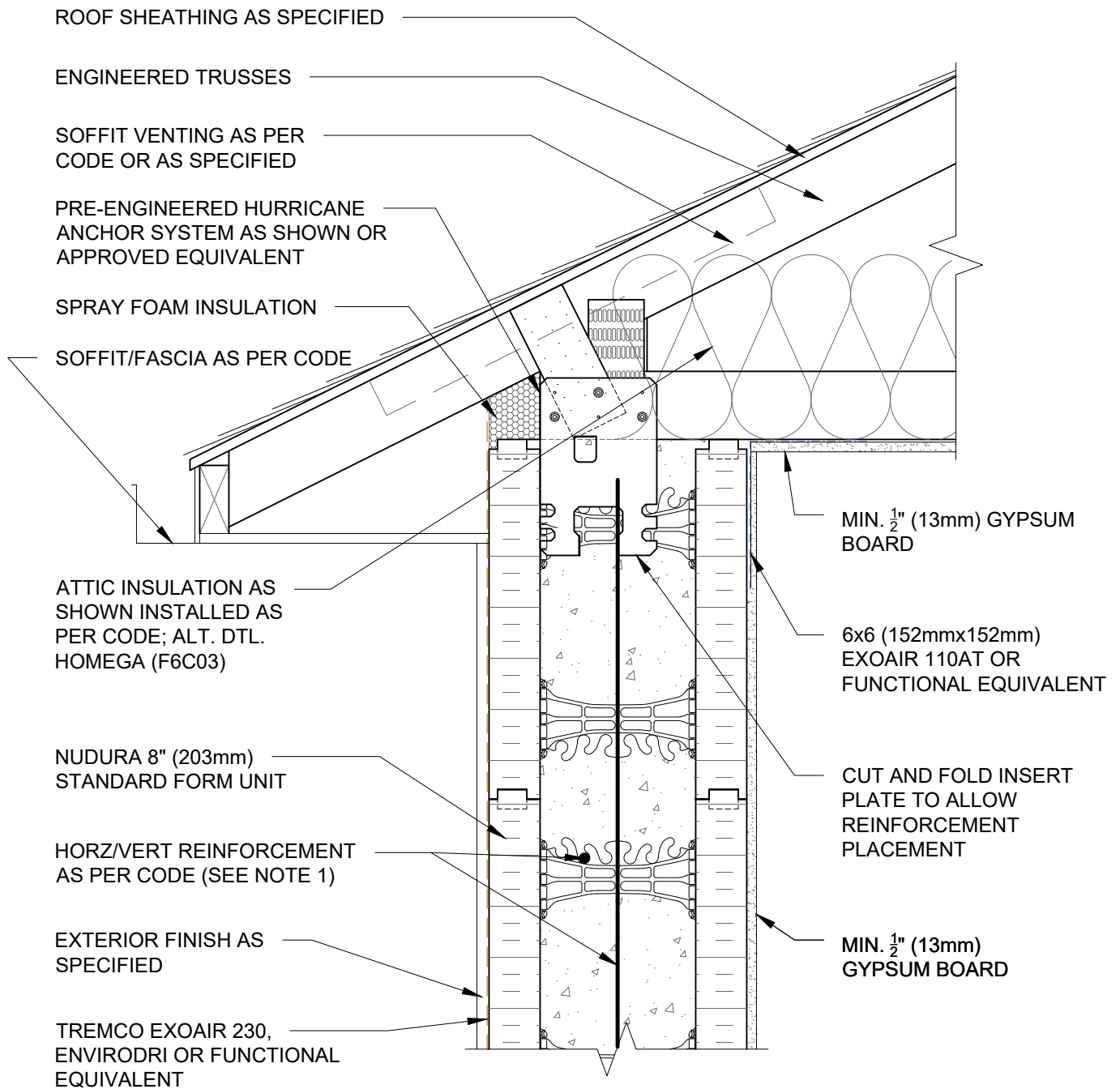
Combustible Construction - Roof



Detail: Nudura 8" (203mm) Form Unit, Gable End Detail, Trusses Parallel to Wall		
Drawn by: TVC	Checked by: KS	Scale: 1:8
Revision #: 04	Revised by: KAB	Date: 3/13/2024

File Name:
F8B02





NOTES:
 1) FOR OPTIMAL REINFORCEMENT PLACEMENT IN THE NUDURA FORM, SPACING OF HORIZONTAL REINFORCEMENT TO BE SPECIFIED AT 18" (457mm) O.C. AND VERTICAL REINFORCEMENT TO BE SPECIFIED AT MULTIPLES OF 8" (203mm) O.C. REFER TO NUDURA REINFORCEMENT PLACEMENT DETAILS.

This detail is for general informational purposes only. The project design professional determines, in its sole discretion, whether this detail or a functionally equivalent detail is best suited for the project with respect to any architecture, engineering, and design requirements, including any local building code requirements. If this document is not reviewed and the product is not approved for use by a licensed design professional, the customer agrees that the detail may contain substantive flaws requiring correction, and hereby releases Tremco CPG Inc. from any and all liability related to the design and installation of the product. This detail is subject to change without notice. Contact Tremco to ensure you have the most recent version.

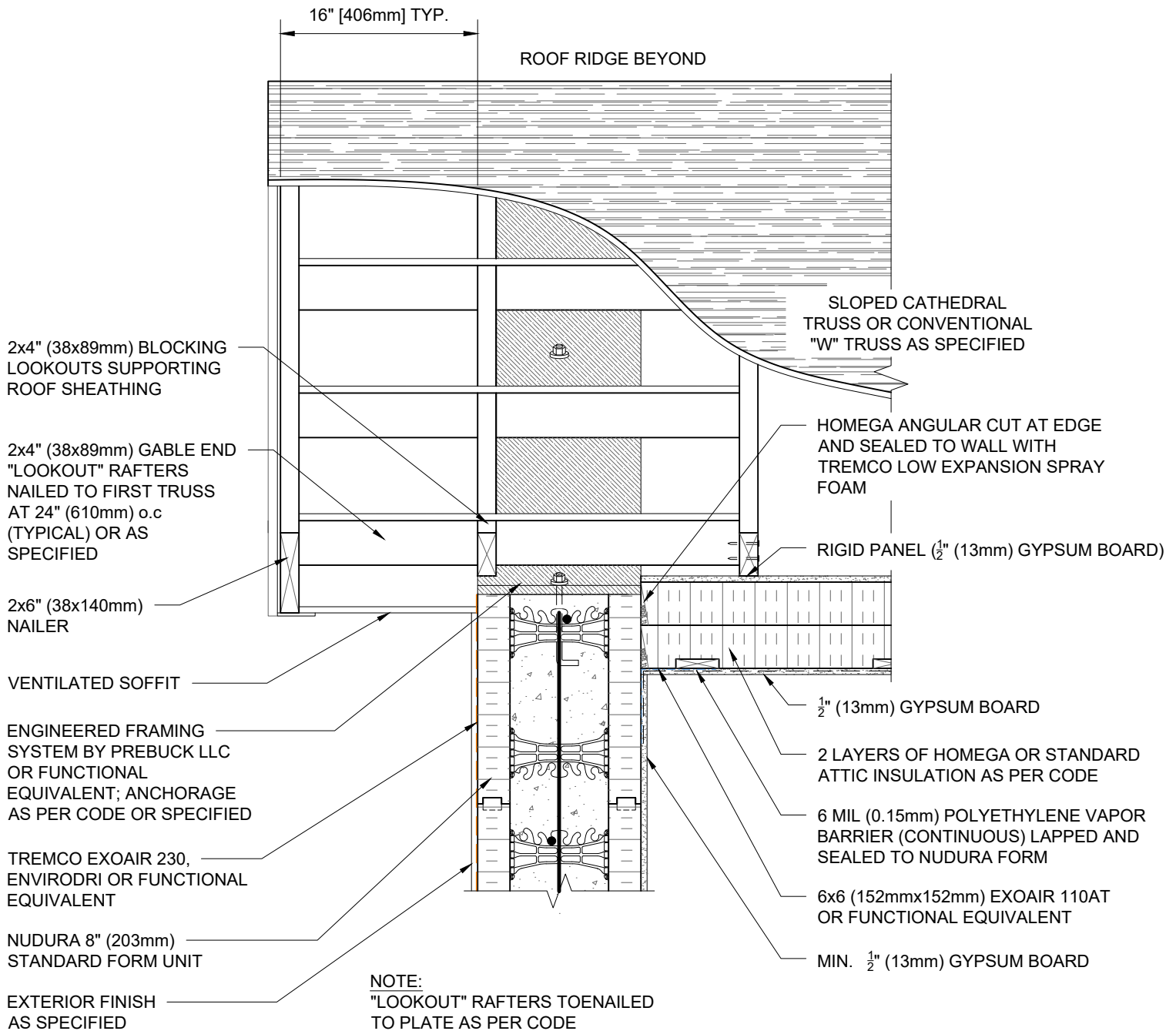
Combustible Construction - Roof



Detail: Nudura 8" (203mm) Form Unit, Multi-Purpose Hanger, Batt Insulation, Exterior Finish as Specified, Roof Trusses		
Drawn by: KS	Checked by: KS	Scale: 1:8
Revision #: 04	Revised by: KAB	Date: 3/13/2024

File Name:	F8B03
------------	-------





NOTES:
1) FOR OPTIMAL REINFORCEMENT PLACEMENT IN THE NUDURA FORM, SPACING OF HORIZONTAL REINFORCEMENT TO BE SPECIFIED AT 18" (457mm) O.C. AND VERTICAL REINFORCEMENT TO BE SPECIFIED AT MULTIPLES OF 8" (203mm) O.C. REFER TO NUDURA REINFORCEMENT PLACEMENT DETAILS.

This detail is for general informational purposes only. The project design professional determines, in its sole discretion, whether this detail or a functionally equivalent detail is best suited for the project with respect to any architecture, engineering, and design requirements, including any local building code requirements. If this document is not reviewed and the product is not approved for use by a licensed design professional, the customer agrees that the detail may contain substantive flaws requiring correction, and hereby releases Tremco CPG Inc. from any and all liability related to the design and installation of the product. This detail is subject to change without notice. Contact Tremco to ensure you have the most recent version.

Combustible Construction - Roof



Detail: Nudura 8" (203mm) Form Unit, Gable End Section, Exterior Finish as Specified			File Name:
Drawn by: TVC	Checked by: KS	Scale: 1:8	F8B04
Revision #: 03	Revised by: KAB	Date: 3/13/2024	

