



# TALL WALL EXTENSION KITS



Giraffe Tall Wall Extension Kits revolutionize the construction process by providing precise, easy-to-use solutions for building tall Insulated Concrete Form (ICF) walls. These Tall Wall Kits are tailored to meet the specific project requirements, enhancing efficiency and reducing the margin for error.

The Tall Wall Extension Kits are for use with the Giraffe Round Tube Alignment System, available in two extension lengths for reaching ICF wall heights up to 20' (6.09 m) to 24' (7.32 m).

## WHY TALL WALL ALIGNMENT?

The Giraffe Round Tube Tall Wall Kits eliminate the complexities and inefficiencies traditionally associated with constructing tall ICF walls. By leveraging advanced engineering and design, these extensions ensure accurate alignment and stability, reducing labor requirements and speeding up the construction process.

- **Convenience:** Having all the components included in one comprehensive kit saves time and hassle, ensuring you have everything you need right at your fingertips.
- **Innovative Features:** Includes a state-of-the-art racking system for easy transportation and storage, ensuring every piece is counted for.
- **User-Friendly:** Designed for ease of use, making it accessible for both new and experienced users.
- **Durability:** Manufactured from 14 gauge, rolled edge, galvanized steel, Giraffe's components are robust and designed for long-term use.



## KIT DETAILS

10' (3.05 M) TALL WALL EXTENSION KIT	12' (3.66 M) TALL WALL EXTENSION KIT
INCLUDES	
20 Straightbacks (10' [3.05 m])	20 Straightbacks (12' [3.66 m])
20 Turnbuckles	20 Turnbuckles
20 Telepoles	20 Telepoles XL
20 HD Straightback Couplers	20 HD Straightback Couplers
80 Gravity Pins	80 Gravity Pins

Both kit options are packaged in a metal bracing rack for storage and transportation.





### Straightback

Straightback wall supports are manufactured from 14-gauge galvanized steel with rolled edges for improved handling and resistance to bending. They can be stacked for convenient storage and transportation, with slots every 4" (102 mm) on center that will work with all ICF brands.



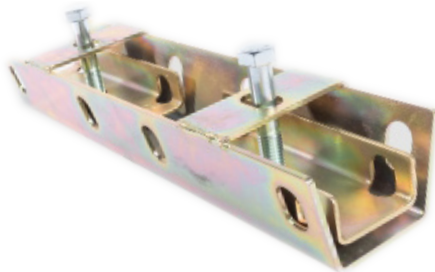
### Turnbuckle

The turnbuckle is an adjustable leg with an internal screw with a zinc-plated threaded rod, ensuring no more sticky or frozen threads. Our system stays concrete-free.



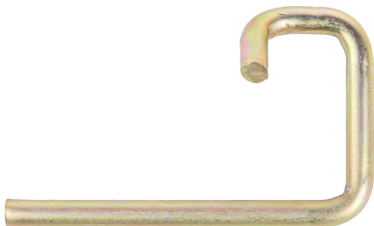
### Telepole

The telepole provides an extended length to the turnbuckle to reach higher wall heights.



### HD Straightback Coupler

The HD Straightback Coupler is used to connect wall channels of different lengths.



### Gravity Pin

Self-locking Gravity Pins are nut and bolt-free, featuring heavy-duty zinc plating for quick and simple use. Our exclusive racking system makes them easy to manage.